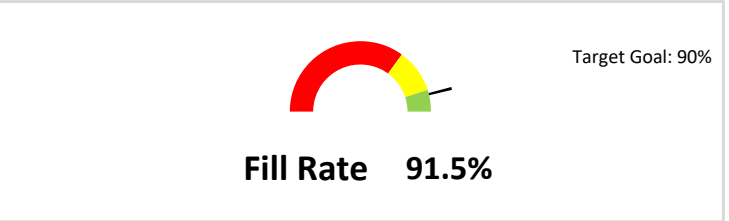
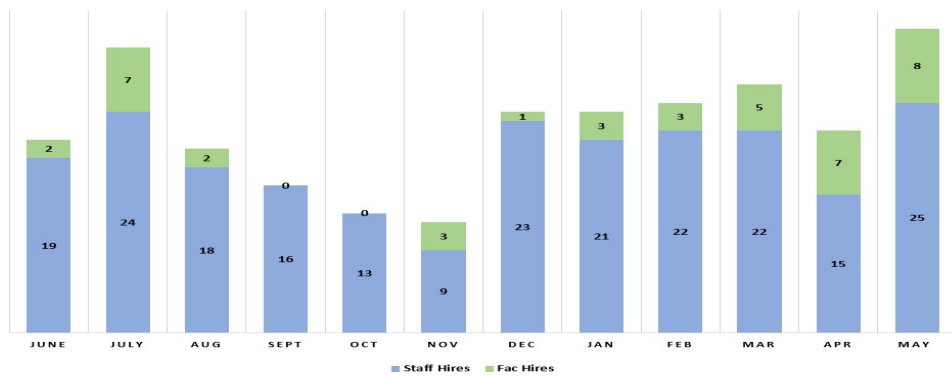


# WORKFORCE DASHBOARD

<b>Full Time Staff/Faculty</b>		<b>Part Time/GA/TA/PC</b>						<b>Student/Vol/Non EE</b>				<b>Total Headcount</b>	
1362/787		2333						2118				6600	
2149													
Month	Jun-25	Jul-25	Aug-25	Sep-25	Oct-25	Nov-25	Dec-25	Jan-26	Feb-26	Mar-26	Apr-26	May-26	12 Month Totals
FT Head Count	2173	2154	2200	2191	2193	2186	2179	2165	2150	2148	2144	2144	2169
FT Hires	21	31	20	16	13	12	24	24	25	27	22	33	268
													Avg FT Head Count
													Total Hires

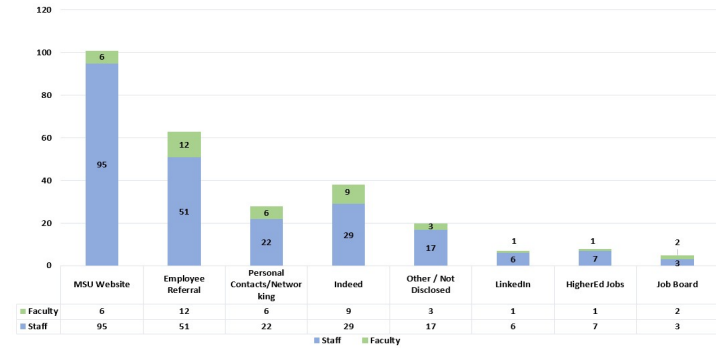


FACULTY AND STAFF HIRES ROLLING 12-MONTH

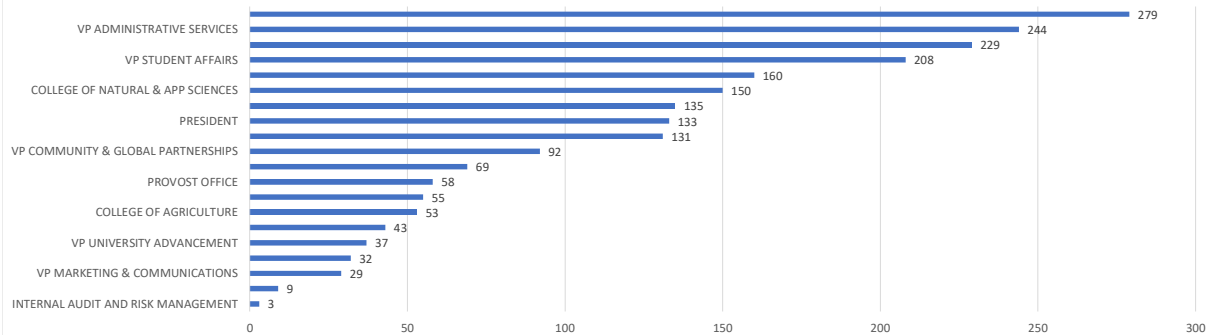


<b>FT Budgeted</b>	2349
<b># Posted</b>	94
<b># Vacant</b>	106
<b>% Filled</b>	91.5%

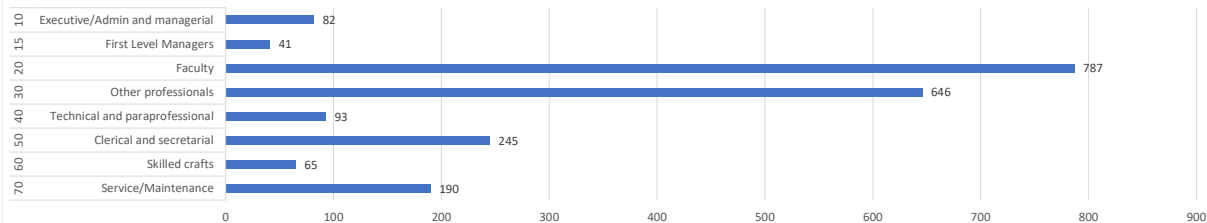
FACULTY AND STAFF HIRE SOURCES ROLLING 12-MONTH



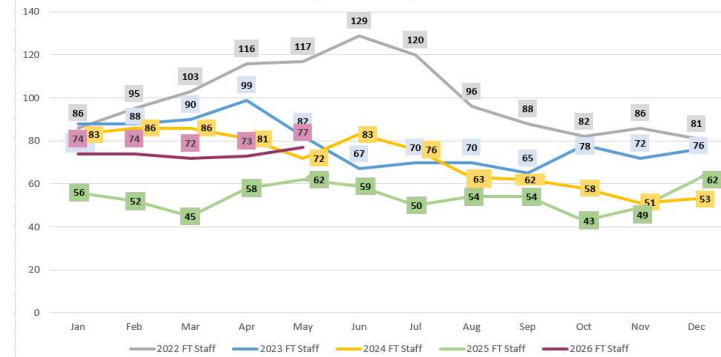
FT Headcount by Cost Center



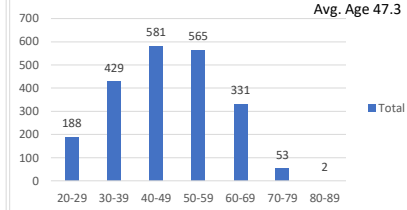
FT Headcount by Skill Code



FT Staff Postings - YOY Comparison 2022-2026



FT Headcount by Age



<b>Avg Years of Service</b>	9
<b>FT Staff</b>	11
<b>FT Average</b>	10