

EXIT DASHBOARD

Voluntary Term				Retirement Only				Involuntary Term				Total Exits		
130				80				24				234		
Month	Jun-23	Jul-23	Aug-23	Sep-23	Oct-23	Nov-23	Dec-23	Jan-24	Feb-24	Mar-24	Apr-24	May-24	12 Month Totals	Avg Head count
Head Count	2072	2012	2111	2123	2137	2143	2142.5	2136.5	2130.5	2131.5	2134.5	2129.5	2117	
Exits	20	62	21	8	12	7	17	28	11	12	17	19	234	Exits

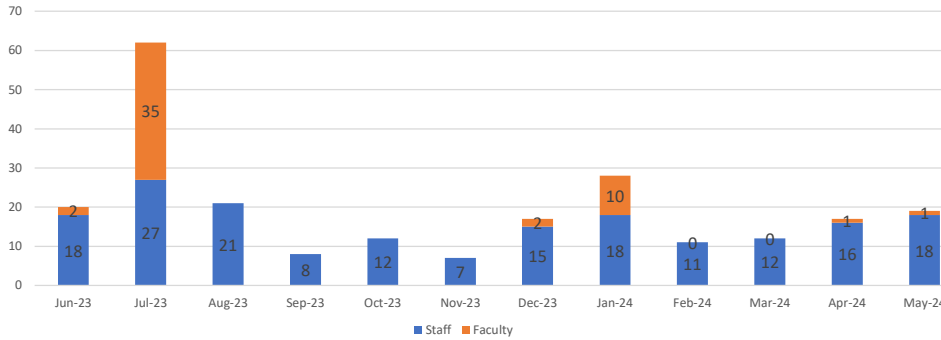
Target Goal: 90%

CUPA FT Avg. - 86.1%



Retention: 88.9%

12 Month Rolling Turnover



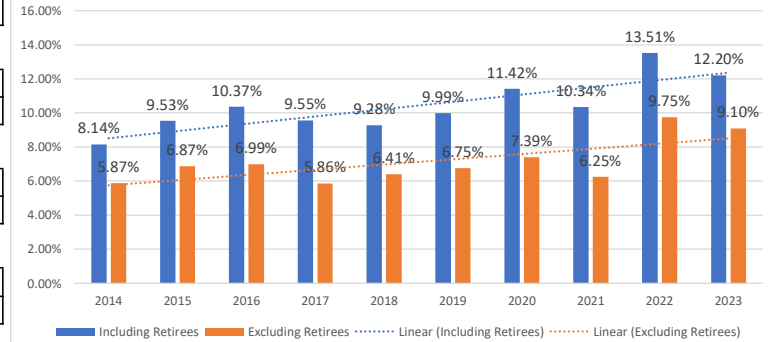
Annual Turnover
11.1%

Without Retirees
7.3%

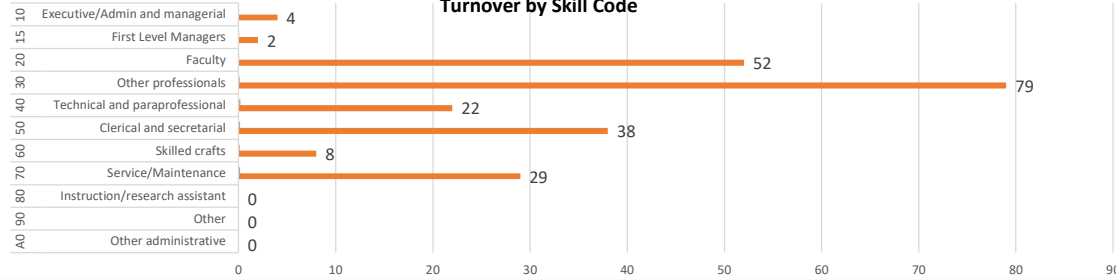
Retirees Only
3.8%

Est. Cost
\$1,521,000.00

10-Year Annual Fall Turnover (Sept- Oct)

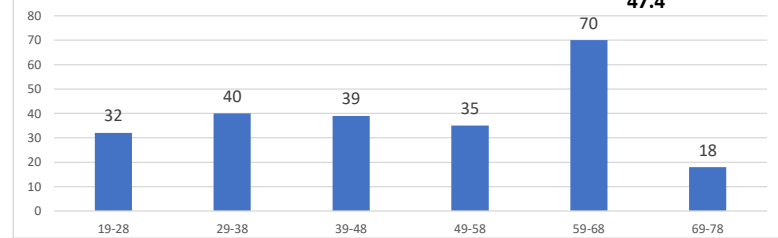


Turnover by Skill Code

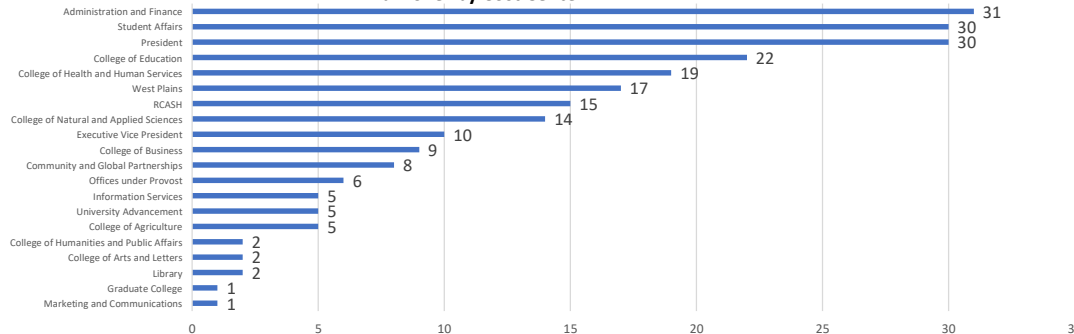


Turnover by Age

Average Age
47.4



Turnover by Cost Center



Resignation Reason and Average Years of Service

*This chart does not include involuntary terms or retiree data

