

EXIT DASHBOARD

Voluntary Term			Retirement Only					Involuntary Term				Total Exits		
140			81					21				242		
Month	Apr-23	May-23	Jun-23	Jul-23	Aug-23	Sep-23	Oct-23	Nov-23	Dec-23	Jan-24	Feb-24	Mar-24	12 Month Totals	Avg Head count
Head Count	2104	2098	2072	2012	2111	2123	2137	2143	2142.5	2136.5	2130.5	2131.5	2112	
Exits	19	25	20	62	21	8	12	7	17	28	11	12	242	Exits

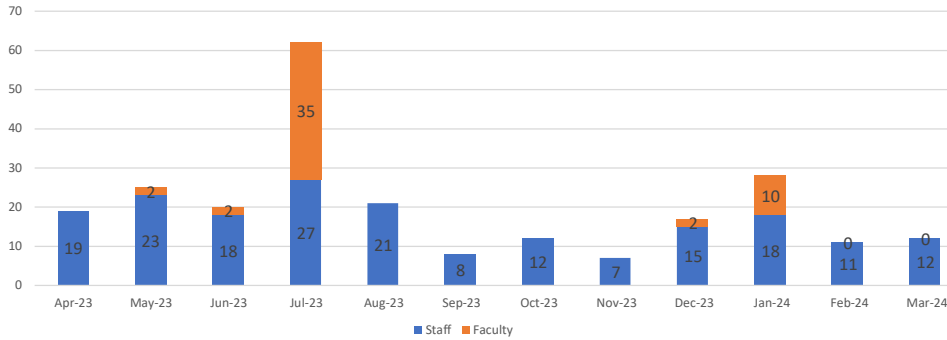
Target Goal: 90%

CUPA FT Avg. - 86.1%



Retention: 88.5%

12 Month Rolling Turnover



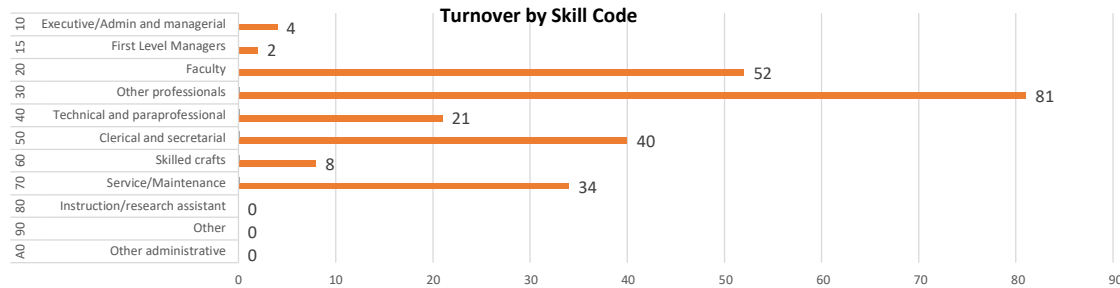
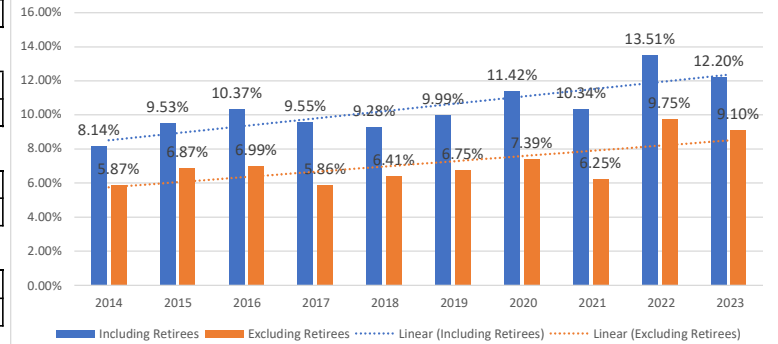
Annual Turnover
11.5%

Without Retirees
7.6%

Retirees Only
3.8%

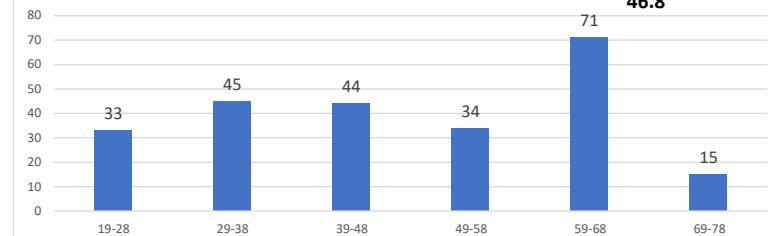
Est. Cost
\$1,573,000.00

10-Year Annual Fall Turnover (Sept - Oct)

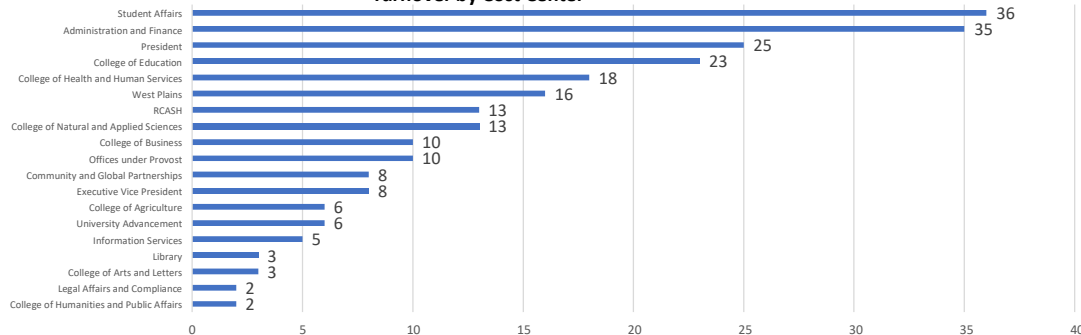


Turnover by Age

Average Age
46.8



Turnover by Cost Center



Resignation Reason and Average Years of Service

*This chart does not include involuntary terms or retiree data

