



# CONGRATULATIONS, NEW BEARS!

We're glad to have you on campus. Your Missouri Statement begins with:

## 1 Check in (9:00–10:30 a.m.) Plaster Student Union (PSU) Food Court

### GET A SPECIAL ON BEARWEAR



Start your BearWear collection today! Use your Admitted Student Day coupon to get great deals on MSU gear from 10 a.m. – 5 p.m. at the campus bookstore, located across from the PSU.

### GET SOCIAL: SEE HOW OTHER NEW BEARS ARE SPENDING THE DAY!



@MissouriState



missouristateu

Follow all the events of the day:  
[#admittedstudentday](#)

## 2 CUSTOMIZE YOUR DAY. PICK YOUR PATH FROM OUR EVENTS.

### Walking tours of campus (9–9:45 a.m.; 11 a.m. – 3 p.m.)

Meet at the PSU Bear Statue to take a guided tour of campus. Tours cover academic areas of campus and last approximately 30–45 minutes. Last tours depart at 9:45 a.m. and 3 p.m.

### BEAR Essentials presentations

9:15 – 9:45 p.m. in PSU 313 Parliamentary Room

1:30–2 p.m. in PSU Theater

Learn the next steps for admitted students. Leave confident you've made the right choice for your college home!

### Residence hall tours (10 a.m. – 3 p.m.)

Learn about the amenities of each hall! Tours depart from the front desk of each building. Last tour departs at 3 p.m.

### Academic receptions (10:30 a.m. – 12 p.m.)

This is your opportunity to network with faculty members and students from your college, while taking the time to tour our showcased facilities. Haven't chosen a major yet? No problem. This is a great opportunity to explore interests. Choose from:

- **College of Arts and Letters:** Sicheluff Hall Library, room 124
- **College of Education:** Hill Hall first floor
- **College of Business:** Glass Hall Grand Atrium
- **College of Humanities and Public Affairs:** Strong Hall atrium
- **College of Natural and Applied Sciences:** Temple Hall first floor
- **Darr College of Agriculture:** Karls Hall atrium and room 102
- **McQueary College of Health and Human Services:** O'Reilly Clinical Health Sciences Center lobby
- **Undecided/exploratory session:** PSU 308

### "Ask me" stations (11 a.m. – 3 p.m.)

#### Set up around PSU

Do you have questions but don't know whom to ask? Get answers from your friends in admissions!

### Tours of the Bill R. Foster and Family Recreation Center (11 a.m. – 3 p.m.)

Interested in fitness and wellness? Check out our amazing recreation center and see all the amenities available to you. Tours will depart from the front desk every 15 minutes. Last tour departs at 3 p.m.

### Tours of the Magers Family Health and Wellness Center (12–3 p.m.)

Our brand-new health and wellness center opened last spring. Here, students can visit doctors, specialists and more, and get prescriptions filled at the pharmacy. Now is your chance to tour your wellness home at MSU.

### Your first business as a Bear (12–3 p.m.)

#### Options:

- **Confirmation fees or deferment | PSU 315 3rd floor**  
We're here to help you pay or request a deferment for your confirmation fee, your official acceptance of MSU's offer of admission.
- **SOAR Springboard | PSU 313**  
We're here to help you register for SOAR.
- **Housing and dining | PSU Ballroom East 3rd floor**  
Find out about our housing policies, complete your housing contract if you need to and learn about meal plans.
- **Financial aid | Carrington Hall 101**  
Ask questions about your FAFSA, financial aid award letter, other financial aid and payment plans.

### Lunch (11 a.m. – 1 p.m.)

Try something at the PSU food court, or visit a dining center in a residence hall.

### Student life expo/New Bear exhibition (12:30–2:30 p.m.)

#### PSU Ballroom West 3rd floor

What kinds of fun activities or leadership roles will you find on campus? Visit booths to find out about student organizations, campus services, enrichment programs and more.

### Admitted Student Day photo booth (12–3 p.m.)

Create Admitted Student Day memories and pose with MSU props or the Bear Statue. Prints made on site.

### Honors College reception (2–3 p.m.)

#### PSU 317

The Honors College is a select community of the most promising scholars at MSU. Membership is based on ACT/SAT scores, class rank and GPA. If you have been invited to Honors College, you can meet other members and staff representatives at this reception.

### Multicultural Services reception (2–3:30 p.m.)

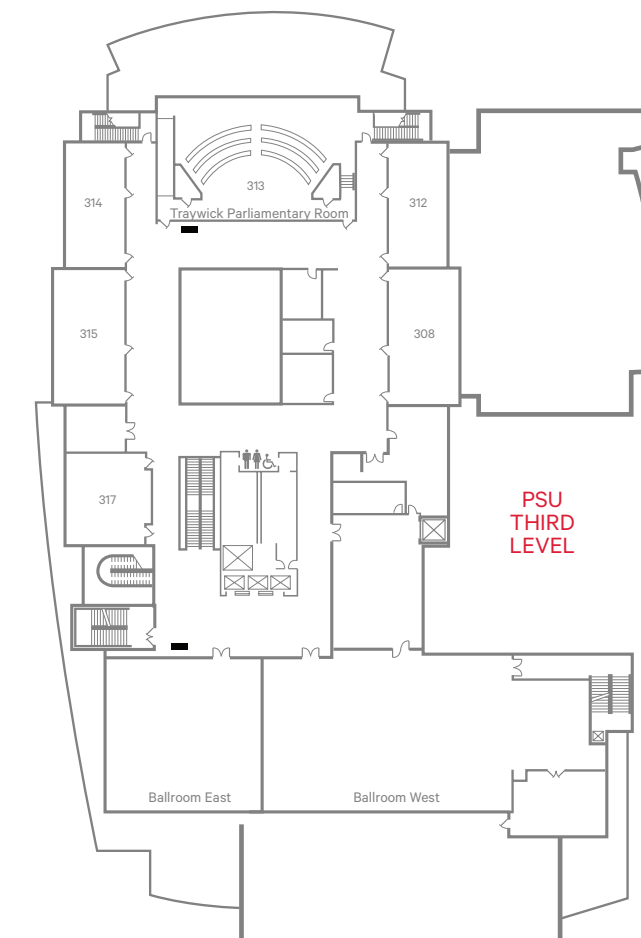
#### PSU Union Club, 4th floor

We love to celebrate our diversity at Missouri State. Visit with staff members from Multicultural Programs, TRIO Programs, Access Programs & BEARS Lead and learn about our programs, services and campus resources.

## HEAD TO THE THIRD FLOOR TO FINISH YOUR FIRST BUSINESS AS A BEAR!

The third floor of the Plaster Student Union, or PSU, is set up just for you today. Here, you'll find some of the people, resources and services you need to get ready to be a Bear, including:

- **Housing and dining**
- **Admissions**
- **SOAR**
- **Multicultural services**
- **Student organizations**
- **Honors College**



### LOOKING FOR FINANCIAL AID?

Find us on first floor  
of Carrington Hall.