



October 2021

Student Voting Rates for Missouri State University

2020 NSLVE Campus Report

October 2021

Dear Colleagues:

We are pleased to send this tailored report containing your students' voting rates for 2020. This report contains three years of relevant topline data: 2016, 2018, and 2020. As always, we disaggregate the data so you can better identify and address gaps in participation.

College and university students participated in record-breaking numbers in the 2020 election. In 2016, the Average Institutional Voting Rate was 53%. This year, it jumped to 66%. We encourage you to review Democracy Counts 2020, our most recent national report.

As in past years, we urge you to share this report widely and strategically, particularly with faculty who, in 2020, were often the most consistent communicators with students about ever-changing voting conditions and deadlines. We also urge you to review our recommendations for engaging elections to cultivate a robust and healthy campus climate for political engagement, discourse, equity, and participation: Election Imperatives (2019) and the more recent Election Imperatives: A Time of Physical Distancing and Social Action. Since "pervasive political discussions" and attentiveness to the campus culture around speech and academic freedom are among our top recommendations, we direct you to our discussion guides on talking about your NSLVE report, on free speech and inclusion, and on hot topics, our Making Sense of ... guides.

Finally, we always encourage you to work with us. Help us help you get better data by reaching out. Email IDHE@Tufts.edu for more information. And as always, watch your inbox for our periodic newsletter, IDHE Update, for announcements about upcoming releases and new resources.

Congratulations on engaging your students in the 2020 election. Remember, student political learning is a year-round objective. Elections may be episodic, but student political engagement should not be.

All the Best,
IDHE Team



(Top Row from left) Duy Trinh, Program Administrator; Adam Gismondi, Director of Impact; Dave Brinker, Senior Researcher; (Bottom Row from left) Nancy Thomas, Director; Norma López, Postdoctoral Scholar; Prabhat Gautam, Data Manager.

We also want to acknowledge and thank **Syed Golam Mohaimen, M.S. student in Data Science at Tufts University** for his contributions toward the creation of these reports.

In This Report

This report presents data on student voter participation rates for your campus. The topline counts on page 5 tells you how many students voted, but we encourage you to look carefully at the data on subsequent pages to learn who voted. Data are presented in the form of vessel charts, overlapping donut charts, and tables.

	2014			2018			2014-2018 Change (p.p.)
	Enrolled	Voted	Rate (%)	Enrolled	Voted	Rate (%)	
Asian	-	-	-	-	-	-	-
American Indian/ Alaska Native	-	-	-	-	-	-	-
Black	-	-	-	-	-	-	-
Hispanic	-	-	-	-	-	-	-

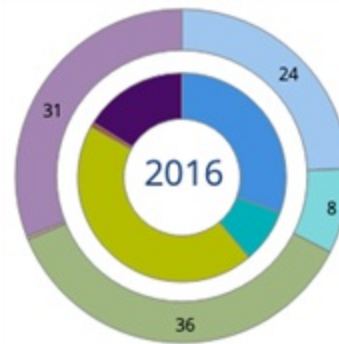
Tables

The tables show, on the left-side columns, the numbers of students and the rates from 2016, 2018, and 2020. On the left-side, percentage point (p.p.) changes between 2016 and 2020. A red down arrow indicates a decrease, a green up arrow indicates an increase, and a yellow arrow pointing to the right indicates no change. "-" in these tables indicates that the data is unavailable/missing, or is available for 10 or less students.



Vessel Chart

This chart shows rates out of 100%, with arrows to the right of each bar representing relevant national averages (medians), which you can find in IDHE's national report Democracy Counts 2020.



Overlapping Donut Chart

This chart is used to show the breakdown of vote method utilization (page 10), with the outer ring showing your campus method utilization and the inner ring showing the national breakdown. These are described in percentages.

Voting, Registration and Yield Rates

YOUR INSTITUTION

62.6%

2020 Voting Rate

+12.2

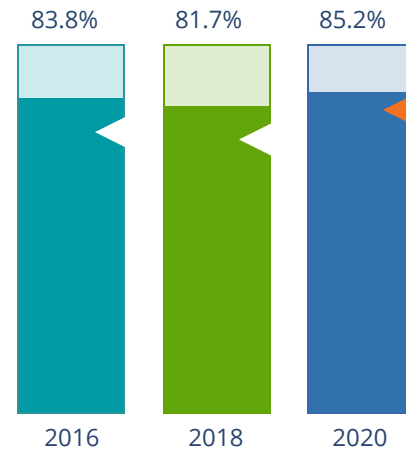
Change From 2016

ALL INSTITUTIONS

66%

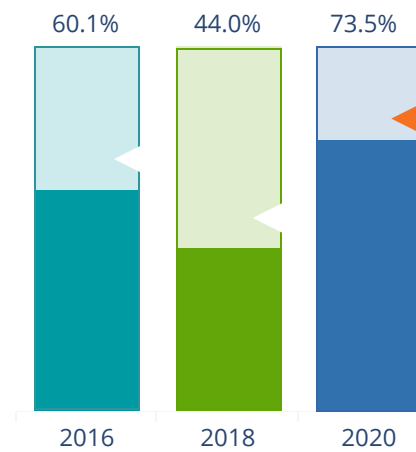
2020 Voting Rate

REGISTRATION RATE



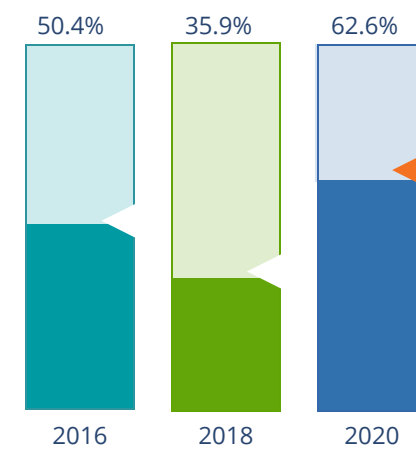
The **Registration Rate** is the percent of your voting-eligible students who registered to vote.

VOTING RATE OF REGISTERED STUDENTS



The **Voting Rate of Registered Students** is the percent of registered students who voted on Election Day. We often refer to this as the “yield” rate.

VOTING RATE



The **Voting Rate** is the percentage of eligible students who voted on Election Day. The voting rate is also the product of the registration and yield rates.

Looking Closer

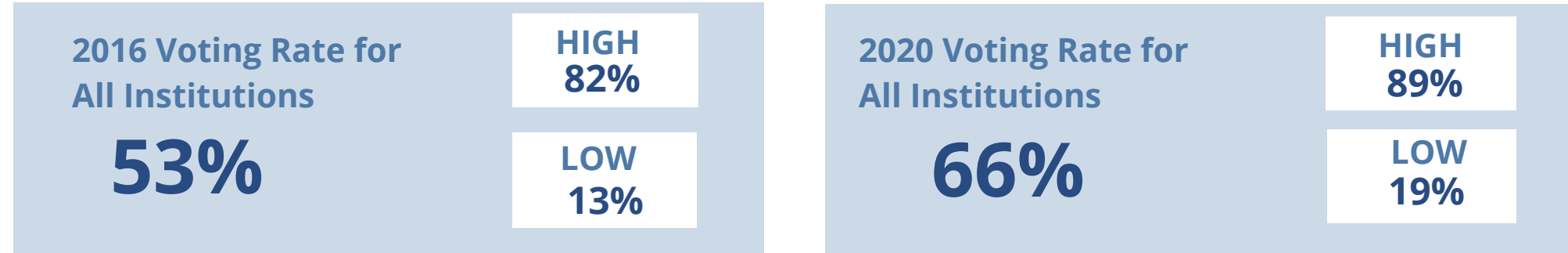
Voting and Registration Rates

	2016	2018	2020	2016-2020 Change (p.p.)
Total Student Enrollment	21,309	21,484	20,525	↓ -784
(Age under 18/Unknown)	24	22	28	↑ 4
(IPEDS estimated non-resident aliens)	1,435	1,187	665	↓ -770
(FERPA records blocked)	19	-	-	-
(Non-Degree Seeking Students)	381	521	781	↑ 400
Total eligible voters	19,450	19,747	19,045	↓ -405
Number of students who registered	16,307	16,127	16,226	↓ -81
Number of students who voted	9,796	7,090	11,920	↑ 2,124
Registration Rate %	84	82	85	↑ 1
Voting Rate of Registered Students %	60	44	73	↑ 13
Voting Rate %	50	36	63	↑ 12

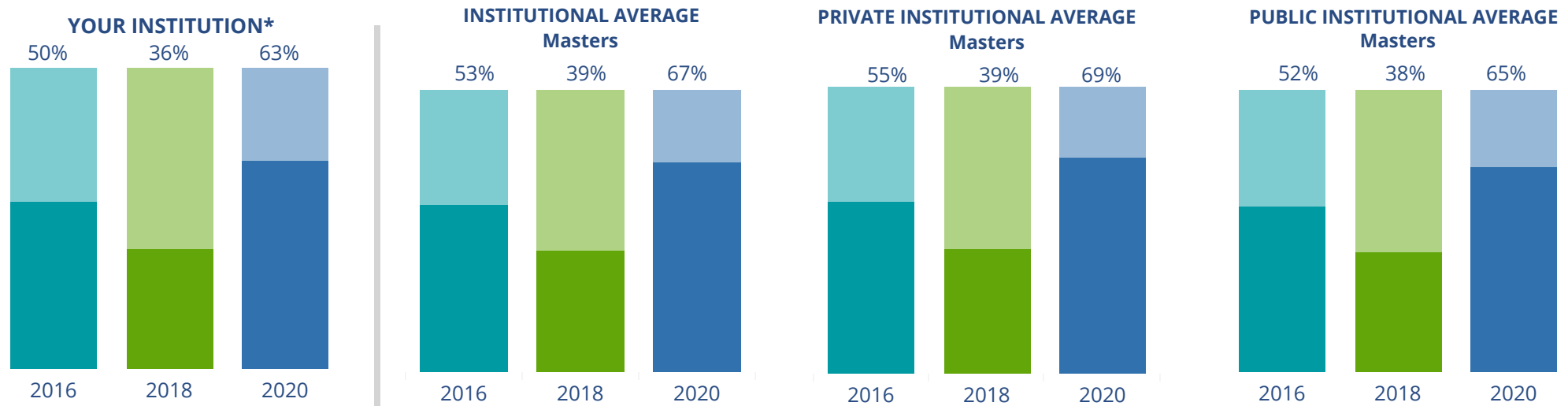
This page provides the numbers we used to calculate your voting, registration, and yield rates. The sub-categories under total student enrollment are the adjustments that we make to account for students who are ineligible to vote due to age or citizenship status. We also exclude, when correctly flagged, students who are not pursuing degrees.

We use IPEDS-derived estimates of NRAs when institutions do not submit non-resident alien status data to NSC, or we cannot verify the accuracy of the reported counts. This estimate is given by "IPEDS estimated non-resident aliens" on this page. If you believe the number of international students reported on this report is incorrect, you can manually adjust your institution's voting rates by using our recalculation tool. <https://id-he.tufts.edu/nslve/nslve-recalculation-tool>.

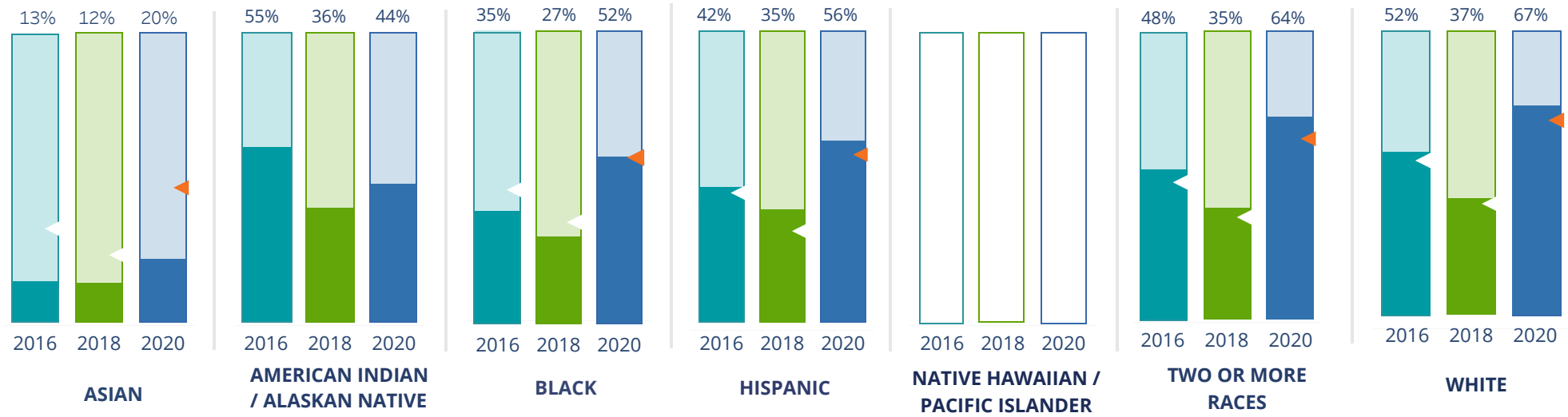
By Institution Types



These are estimated voting rates of your institution compared to the average voting rates of similar institutions in NSLVE. *"Your Institution" chart is presented at a different scale.



By Race / Ethnicity



These are estimated voting rates for race / ethnicity groups. These classifications are provided by campuses and are obtained following race reporting procedures* defined by the National Center for Education Statistics of the Institute of Education Sciences (IES). Please see our FAQ for more detail on why we cannot report national benchmark for some of the demographic groups:

<https://tufts.app.box.com/v/idhe-nslve-report-faq>

If you notice unavailable/missing data in this page, it could mean any of the following for your institution: (i) does not report this data; (ii) did not provide this data in past years; (iii) does not separately submit data for one or more of the demographic groups, or (iv) the data is reported for 10 or fewer students.

* <https://nces.ed.gov/ipeds/report-your-data/race-ethnicity-collecting-data-for-reporting-purposes>

Looking Closer

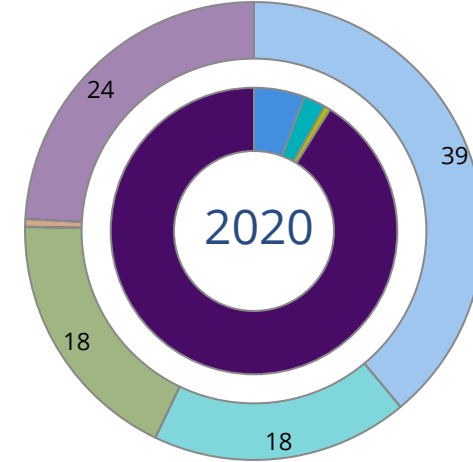
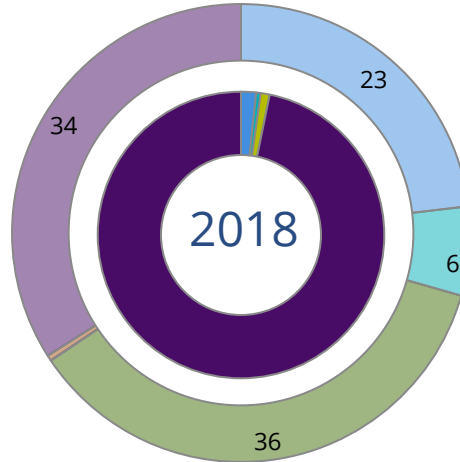
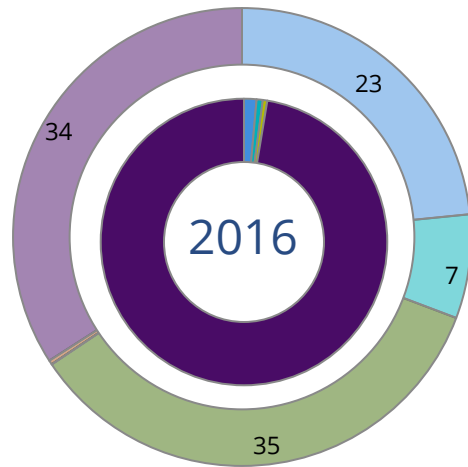
By Race/Ethnicity

This page provides the numbers we used to calculate race / ethnicity group voting rates. We include the counts of students and the change in rates between the two most recent comparable election years. If you notice unavailable/missing data in this page, it could mean any of the following for your institution: (i) does not report this data; (ii) did not provide this data in past years; (iii) does not separately submit data for one or more of the demographic groups, or (iv) the data is reported for 10 or fewer students.

	2016			2018			2020			2016-2020 Change (p.p)
	Enrolled	Voted	Rate	Enrolled	Voted	Rate	Enrolled	Voted	Rate	
Asian	761	97	13	643	79	12	915	182	20	↑ 7
American Indian/ Alaska Native	91	50	55	89	32	36	69	30	43	↓ -11
Black	908	320	35	860	234	27	766	395	52	↑ 16
Hispanic	718	302	42	764	268	35	840	472	56	↑ 14
Native Hawaiian/ Pacific Islander	15	-	-	16	-	-	19	-	-	-
2 or More Races	718	341	47	754	266	35	673	433	64	↑ 17
White	16,405	8,520	52	16,476	6,085	37	15,410	10,262	67	↑ 15
Race Unknown	1,095	157	14	1,182	124	10	900	138	15	↑ 1

By Voting Method

■ Not-In-Person
 ■ Early Vote
 ■ In-Person
 ■ Other
 ■ Provisional
 ■ Unknown



	2016		2018		2020		2016-2020	
	Voted	Rate	Voted	Rate	Voted	Rate	Change (p.p.)	
Early Vote	72	1	38	1	297	3	2	↑
In-Person on Election Day	53	1	70	1	83	1	0	↑
Not-In-Person	141	1	124	2	675	6	4	↑
Other	-	-	-	-	-	-	-	-
Provisional	-	-	-	-	-	-	-	-
Voting Method Unknown	9,530	97	6,858	97	10,863	91	-6	↓

These are estimated rates for vote method utilization, the number of students utilizing each method, and the percent of students utilizing each method. Not all U.S. states provide information on vote method; voting method for voter files from these states are classified "Voting Method Unknown." For a list of these states, see our FAQ. <https://idhe.tufts.edu/nsive/nsive-faq#CampusReports>

By Age Group

	2016	2018	2020
18-21	43%	28%	59%
22-24	46%	35%	62%
25-29	55%	41%	61%
30-39	64%	53%	68%
40-49	74%	62%	72%
50+	76%	79%	81%

Voting is habit-forming and young voters will usually continue as voters in subsequent elections.

Also, young voters are more likely to be contacted by campaigns and are visible, and therefore significant, to elected officials. While in the past, we have seen voting rates increase across age groups, in recent cycles, the most significant increases have been among first-time and the youngest voters. Some colleges serve primarily young students, traditionally viewed as students in the 18-21 or 22-24 categories here. Others have much higher numbers of enrolled older undergraduate or graduate students.

Looking Closer

By Age Group

Here, we provide the numbers of students in each age category and the voting rates for each group. These are based on the student's age on the day of the election, as calculated by the National Student Clearinghouse using data from student enrollment records.

	2016			2018			2020			2016-2020
	Enrolled	Voted	Rate	Enrolled	Voted	Rate	Enrolled	Voted	Rate	Change (p.p)
18-21	11,782	5,013	43	12,048	3,399	28	11,371	6,695	59	↑ 16
22-24	4,684	2,174	46	4,611	1,622	35	4,455	2,743	62	↑ 15
25-29	2,062	1,126	55	1,916	784	41	1,697	1,029	61	↑ 6
30-39	1,393	894	64	1,378	727	53	1,265	854	68	↑ 3
40-49	527	390	74	596	372	62	555	398	72	↓ -2
50+	263	199	76	235	186	79	249	201	81	↑ 5

Looking Closer

By Sex

	2016			2018			2020			2016-2020	
	Enrolled	Voted	Rate	Enrolled	Voted	Rate	Enrolled	Voted	Rate	Change (p.p)	
Female	12,124	6,035	50	12,198	4,305	35	11,764	7,446	63	↑	14
Male	8,587	3,761	44	8,582	2,784	32	7,816	4,464	57	↑	13

These are estimated voting rates for sex groups and the numbers we used to calculate their voting rates. These classifications are provided by campuses and are obtained following the reporting procedures defined by the National Center for Education Statistics (NCES) of the Institute of Education Sciences (IES). Presently, NCES requires institutions to report students as “Male” or “Female” only.*

If you notice missing data in this page, it could mean any of the following for your institution: (i) does not report this data; (ii) did not provide this data in past years; (iii) does not separately submit data for one or more of the demographic groups, or (iv) the data is reported for 10 or fewer students.

*<https://surveys.nces.ed.gov/ipeds/public/survey-materials/faq?faqid=11>

Looking Closer

By Education Level / Undergraduate Class Year

	2016			2018			2020			2016-2020
	Enrolled	Voted	Rate (%)	Enrolled	Voted	Rate (%)	Enrolled	Voted	Rate (%)	Change (p.p)
EDUCATION LEVEL										
Undergraduate	17,166	7,876	46	16,959	5,455	32	15,458	9,301	60	↑ 14
Graduate	2,554	1,390	54	2,732	1,244	46	2,924	1,923	66	↑ 11
Class Unknown	991	530	53	1,093	391	36	1,210	696	58	↑ 4
CLASS YEAR										
First Year	4,316	40	1,712	4,110	26	1,059	3,973	56	2,209	↑ 16
Second Year	3,674	41	1,517	3,512	26	908	2,867	61	1,751	↑ 20
Upper Level	9,938	51	5,046	10,184	37	3,782	9,677	61	5,936	↑ 11
ENROLLMENT STATUS										
Full-time	16,887	7,487	44	16,558	5,135	31	14,850	9,117	61	↑ 17
Part-time	3,824	2,309	60	4,226	1,955	46	4,742	2,803	59	↓ -1

These are estimated voting rates by Education Level (undergraduate/graduate), Class Year, and Enrollment Status (full-time/part-time), and the numbers we used to calculate these rates.

If you notice missing data in this page, it could mean any of the following for your institution: (i) does not report this data; (ii) did not provide this data in past years; (iii) does not separately submit data for one or more of the demographic groups, or (iv) the data is reported for 10 or fewer students.

By Field of Study

FIELDS	2016			2018			2020			2016-2020
	Enrolled	Voted	Rate	Enrolled	Voted	Rate	Enrolled	Voted	Rate	Change (p.p)
Architecture	28	23	82	29	18	62	15	-	-	-
Biological and Biomedical Sciences	1,074	516	48	1,124	371	33	900	567	63	↑ 15
Business, Management, and Marketing	4,824	1,743	36	4,693	1,191	25	4,074	2,094	51	↑ 15
Communication and Journalism	816	437	54	787	308	39	462	312	68	↑ 14
Computer and Information Sciences	478	221	46	721	265	37	816	443	54	↑ 8
Education	2,656	1,550	58	2,584	1,044	40	2,435	1,759	72	↑ 14
Engineering and Engineering Technologies	334	184	55	309	132	43	366	193	53	↓ -2

These are estimated voting rates by field of study, and the numbers we used to calculate the field of study rates. For an explanation of CIP codes, please see our FAQ.* There are roughly 8,000 fields of study among U.S. colleges and universities, so we provide rates for condensed categories.

*<https://tufts.app.box.com/v/idhe-nslve-report-faq>

By Field of Study

FIELDS	2016			2018			2020			2016-2020	
	Enrolled	Voted	Rate	Enrolled	Voted	Rate	Enrolled	Voted	Rate	Change (p.p)	
English Language and Literature	341	231	68	329	170	52	281	202	72	↑	4
Family and Consumer/Human Sciences	559	267	48	528	184	35	512	328	64	↑	16
Foreign Languages, Literatures, and Lingui..	114	68	60	131	64	49	115	84	73	↑	13
Health Professions	2,104	989	47	2,122	658	31	2,069	1,312	63	↑	16
History	109	78	72	151	91	60	213	173	81	↑	10
Law Enforcement, Firefighting, and Protec..	-	-	-	-	-	-	42	26	62	-	-
Liberal Arts and Sciences, and Humanities	1,010	329	33	875	211	24	866	475	55	↑	22
Mathematics and Statistics	121	59	49	115	38	33	88	50	57	↑	8
Multi/Interdisciplinary Studies	189	110	58	172	82	48	111	85	77	↑	18
Natural Resources and Conservation	101	48	48	111	49	44	108	62	57	↑	10
Parks, Recreation, Leisure, and Fitness Stu..	600	206	34	684	145	21	592	332	56	↑	22
Philosophy and Religious Studies	96	63	66	83	44	53	67	47	70	↑	5
Physical Sciences	383	177	46	344	118	34	315	176	56	↑	10
Psychology	899	406	45	986	363	37	980	641	65	↑	20

By Field of Study

FIELDS	2016			2018			2020			2016-2020 Change (p.p)
	Enrolled	Voted	Rate	Enrolled	Voted	Rate	Enrolled	Voted	Rate	
Public Administration and Social Service Professions	332	190	57	337	127	38	309	231	75	↑ 18
Social Sciences	939	501	53	916	372	41	796	524	66	↑ 12
Visual and Performing Arts	885	458	52	883	388	44	1,001	685	68	↑ 17
Unknown	1,056	555	53	1,113	400	36	1,268	735	58	↑ 5

About This Report

Thank you for participating in the National Study of Learning, Voting, and Engagement.

Since NSLVE's launch in 2013, nearly 1,200 colleges and universities have signed up to receive their voting rates for the 2012, 2014, 2016, 2018, and 2020 federal elections.

Along with others, your institution's participation in this study has allowed us to build a robust database of over 50 million college student records, about 10 million for each election year, that serve as a foundation for innovative research on college student political learning and engagement in democracy.

NSLVE is a signature initiative of the Institute for Democracy and Higher Education (IDHE) at Tufts University's Jonathan M. Tisch College of Civic Life. The mission of IDHE is to shift college and university priorities and culture to advance political learning, agency, and equity. We achieve our mission through research, resource development, technical assistance, and advocacy.

About the Data

The voter registration and voting rates in this report reflect the percentage of your institution's students who were eligible to vote and who actually voted in the 2016, 2018, and 2020 elections.

These results are based on enrollment records your institution submitted to the National Student Clearinghouse (NSC) and publicly available voting files collected by L2 Political.

Enrollment lists are adjusted by deducting students under age 18 (at the time of the election), people identified as non-degree seeking and those identified by campuses as "nonresident aliens" (NRAs) (the federal government's category for mostly international students). Unfortunately, not all campuses report NRAs to NSC. For those campuses, we use IPEDS to calculate the number of NRA students on each campus and adjust NSC enrollment numbers to estimate the number of students to remove. We also quality check NRA removals by verifying that there is little to no discrepancy between the number of international students reported by the campus to IPEDS and to NSC. We cannot adjust subgroup analyses absent identification of NRAs verified by the process above. We welcome closer partnerships with individual colleges and universities to provide more accurate rates. For more on the data and the matching process, see our FAQ on Campus Reports.

Missouri State University

Thank you for the work you do to improve your students' political learning and engagement. We hope that you find your NSLVE report useful. For up-to-date news on NSLVE data, resources, and to sign up for our newsletter visit: <https://idhe.tufts.edu>.

References: IDHE encourages report recipients to share this report as broadly as possible, including posting it on the college or university's website. When doing so, please use the following citation: Institute for Democracy & Higher Education: National Study of Learning, Voting and Engagement. (2021). 2016, 2018, and 2020 report for _____ [name of institution]. Medford, MA.



Barnum Hall
163 Packard Ave.
Medford, MA 02155

tischcollege@tufts.edu
617.627.3453



Institute for Democracy & Higher Education:
National Study of Learning, Voting, and Engagement
Barnum Hall, Medford, MA 02155

Follow Us on Twitter: @TuftsIDHE
NSLVE@tufts.edu
617.627.0620