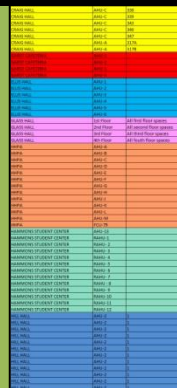


# SCHEDULING SPACE FOR ENERGY EFFICIENCY



Integrated Event Scheduling - QTS, QTS Facilities - umc64812

File | Directions | Options | Administration | Help

Save Directory

Room Name: SCL 0216    Maximum Capacity: 24    OK

Form Name: Classrooms    Default Seat Rate: 50    Cancel

Priority: SCL

Attributes Label (Priority)

Categories: Value

Levels: Value

Attributes: Value

Comments: SCL 0216

101	SCL 0216	Office - Cleanup and maintenance	1
102	SCL 0216	Office - Faculty	1
103	SCL 0216	Office - Service	8
104	SCL 0216	Classroom	24
105	SCL 0216	Classroom - Service	24
106	SCL 0216	Classroom	24
107	SCL 0216	Classroom	24
108	SCL 0216	Classroom	24
109	SCL 0216	Classroom	24
110	SCL 0216	Classroom	24
111	SCL 0216	Classroom	24
112	SCL 0216	Classroom	24
113	SCL 0216	Classroom	24
114	SCL 0216	Classroom	24
115	SCL 0216	Classroom	24
116	SCL 0216	Classroom	24
117	SCL 0216	Classroom	24
118	SCL 0216	Classroom	24
119	SCL 0216	Classroom	24
120	SCL 0216	Classroom	24
121	SCL 0216	Classroom	24
122	SCL 0216	Classroom	24
123	SCL 0216	Classroom	24
124	SCL 0216	Classroom	24
125	SCL 0216	Classroom	24
126	SCL 0216	Classroom	24
127	SCL 0216	Classroom	24
128	SCL 0216	Classroom	24
129	SCL 0216	Classroom	24
130	SCL 0216	Classroom	24
131	SCL 0216	Classroom	24
132	SCL 0216	Classroom	24
133	SCL 0216	Classroom	24
134	SCL 0216	Classroom	24
135	SCL 0216	Classroom	24
136	SCL 0216	Classroom	24
137	SCL 0216	Classroom	24
138	SCL 0216	Classroom	24
139	SCL 0216	Classroom	24
140	SCL 0216	Classroom	24
141	SCL 0216	Classroom	24
142	SCL 0216	Classroom	24
143	SCL 0216	Classroom	24
144	SCL 0216	Classroom	24
145	SCL 0216	Classroom	24
146	SCL 0216	Classroom	24
147	SCL 0216	Classroom	24
148	SCL 0216	Classroom	24
149	SCL 0216	Classroom	24
150	SCL 0216	Classroom	24

Room	Room Code	Activity	Begin Time	End Time	Room Name	Event Name	Event Area	Event Type
101	SCL 0216	Office - Cleanup and maintenance	08:00:00	08:30:00	SCL 0216	Office - Cleanup and maintenance	Office	Maintenance
102	SCL 0216	Office - Faculty	08:00:00	08:30:00	SCL 0216	Office - Faculty	Office	Maintenance
103	SCL 0216	Office - Service	08:00:00	08:30:00	SCL 0216	Office - Service	Office	Maintenance
104	SCL 0216	Classroom	08:00:00	08:30:00	SCL 0216	Classroom	Classroom	Maintenance
105	SCL 0216	Classroom - Service	08:00:00	08:30:00	SCL 0216	Classroom - Service	Classroom	Maintenance
106	SCL 0216	Classroom	08:00:00	08:30:00	SCL 0216	Classroom	Classroom	Maintenance
107	SCL 0216	Classroom	08:00:00	08:30:00	SCL 0216	Classroom	Classroom	Maintenance
108	SCL 0216	Classroom	08:00:00	08:30:00	SCL 0216	Classroom	Classroom	Maintenance
109	SCL 0216	Classroom	08:00:00	08:30:00	SCL 0216	Classroom	Classroom	Maintenance
110	SCL 0216	Classroom	08:00:00	08:30:00	SCL 0216	Classroom	Classroom	Maintenance
111	SCL 0216	Classroom	08:00:00	08:30:00	SCL 0216	Classroom	Classroom	Maintenance
112	SCL 0216	Classroom	08:00:00	08:30:00	SCL 0216	Classroom	Classroom	Maintenance
113	SCL 0216	Classroom	08:00:00	08:30:00	SCL 0216	Classroom	Classroom	Maintenance
114	SCL 0216	Classroom	08:00:00	08:30:00	SCL 0216	Classroom	Classroom	Maintenance
115	SCL 0216	Classroom	08:00:00	08:30:00	SCL 0216	Classroom	Classroom	Maintenance
116	SCL 0216	Classroom	08:00:00	08:30:00	SCL 0216	Classroom	Classroom	Maintenance
117	SCL 0216	Classroom	08:00:00	08:30:00	SCL 0216	Classroom	Classroom	Maintenance
118	SCL 0216	Classroom	08:00:00	08:30:00	SCL 0216	Classroom	Classroom	Maintenance
119	SCL 0216	Classroom	08:00:00	08:30:00	SCL 0216	Classroom	Classroom	Maintenance
120	SCL 0216	Classroom	08:00:00	08:30:00	SCL 0216	Classroom	Classroom	Maintenance
121	SCL 0216	Classroom	08:00:00	08:30:00	SCL 0216	Classroom	Classroom	Maintenance
122	SCL 0216	Classroom	08:00:00	08:30:00	SCL 0216	Classroom	Classroom	Maintenance
123	SCL 0216	Classroom	08:00:00	08:30:00	SCL 0216	Classroom	Classroom	Maintenance
124	SCL 0216	Classroom	08:00:00	08:30:00	SCL 0216	Classroom	Classroom	Maintenance
125	SCL 0216	Classroom	08:00:00	08:30:00	SCL 0216	Classroom	Classroom	Maintenance
126	SCL 0216	Classroom	08:00:00	08:30:00	SCL 0216	Classroom	Classroom	Maintenance
127	SCL 0216	Classroom	08:00:00	08:30:00	SCL 0216	Classroom	Classroom	Maintenance
128	SCL 0216	Classroom	08:00:00	08:30:00	SCL 0216	Classroom	Classroom	Maintenance
129	SCL 0216	Classroom	08:00:00	08:30:00	SCL 0216	Classroom	Classroom	Maintenance
130	SCL 0216	Classroom	08:00:00	08:30:00	SCL 0216	Classroom	Classroom	Maintenance
131	SCL 0216	Classroom	08:00:00	08:30:00	SCL 0216	Classroom	Classroom	Maintenance
132	SCL 0216	Classroom	08:00:00	08:30:00	SCL 0216	Classroom	Classroom	Maintenance
133	SCL 0216	Classroom	08:00:00	08:30:00	SCL 0216	Classroom	Classroom	Maintenance
134	SCL 0216	Classroom	08:00:00	08:30:00	SCL 0216	Classroom	Classroom	Maintenance
135	SCL 0216	Classroom	08:00:00	08:30:00	SCL 0216	Classroom	Classroom	Maintenance
136	SCL 0216	Classroom	08:00:00	08:30:00	SCL 0216	Classroom	Classroom	Maintenance
137	SCL 0216	Classroom	08:00:00	08:30:00	SCL 0216	Classroom	Classroom	Maintenance
138	SCL 0216	Classroom	08:00:00	08:30:00	SCL 0216	Classroom	Classroom	Maintenance
139	SCL 0216	Classroom	08:00:00	08:30:00	SCL 0216	Classroom	Classroom	Maintenance
140	SCL 0216	Classroom	08:00:00	08:30:00	SCL 0216	Classroom	Classroom	Maintenance
141	SCL 0216	Classroom	08:00:00	08:30:00	SCL 0216	Classroom	Classroom	Maintenance
142	SCL 0216	Classroom	08:00:00	08:30:00	SCL 0216	Classroom	Classroom	Maintenance
143	SCL 0216	Classroom	08:00:00	08:30:00	SCL 0216	Classroom	Classroom	Maintenance
144	SCL 0216	Classroom	08:00:00	08:30:00	SCL 0216	Classroom	Classroom	Maintenance
145	SCL 0216	Classroom	08:00:00	08:30:00	SCL 0216	Classroom	Classroom	Maintenance
146	SCL 0216	Classroom	08:00:00	08:30:00	SCL 0216	Classroom	Classroom	Maintenance
147	SCL 0216	Classroom	08:00:00	08:30:00	SCL 0216	Classroom	Classroom	Maintenance
148	SCL 0216	Classroom	08:00:00	08:30:00	SCL 0216	Classroom	Classroom	Maintenance
149	SCL 0216	Classroom	08:00:00	08:30:00	SCL 0216	Classroom	Classroom	Maintenance
150	SCL 0216	Classroom	08:00:00	08:30:00	SCL 0216	Classroom	Classroom	Maintenance

Krista Bassen . University Facilities Analyst  
Pilar Karlen. Energy Manager  
Shelley Netzer. Scheduling Coordinator



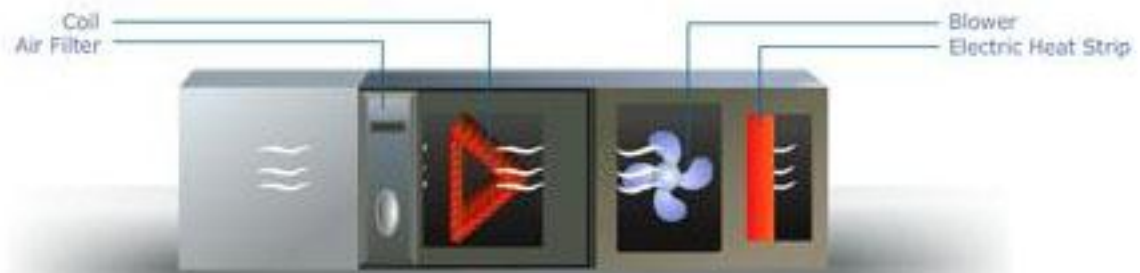
PILAR KARLEN

ENERGY  
MANAGER

PILAR BROUGHT HER EXPERTISE TO THE UNIVERSITY AS THE  
ENERGY MANAGER  
FACILITIES MAINTENANCE  
OCTOBER 2012



WHAT IS AN AIR HANDLER UNIT?



THE MAIN PURPOSE OF THE AIR HANDLER IS TO CIRCULATE THE AIR THROUGH THE BUILDING. IT WORKS IN CONJUNCTION TO THE HEATING AND COOLING SYSTEM.



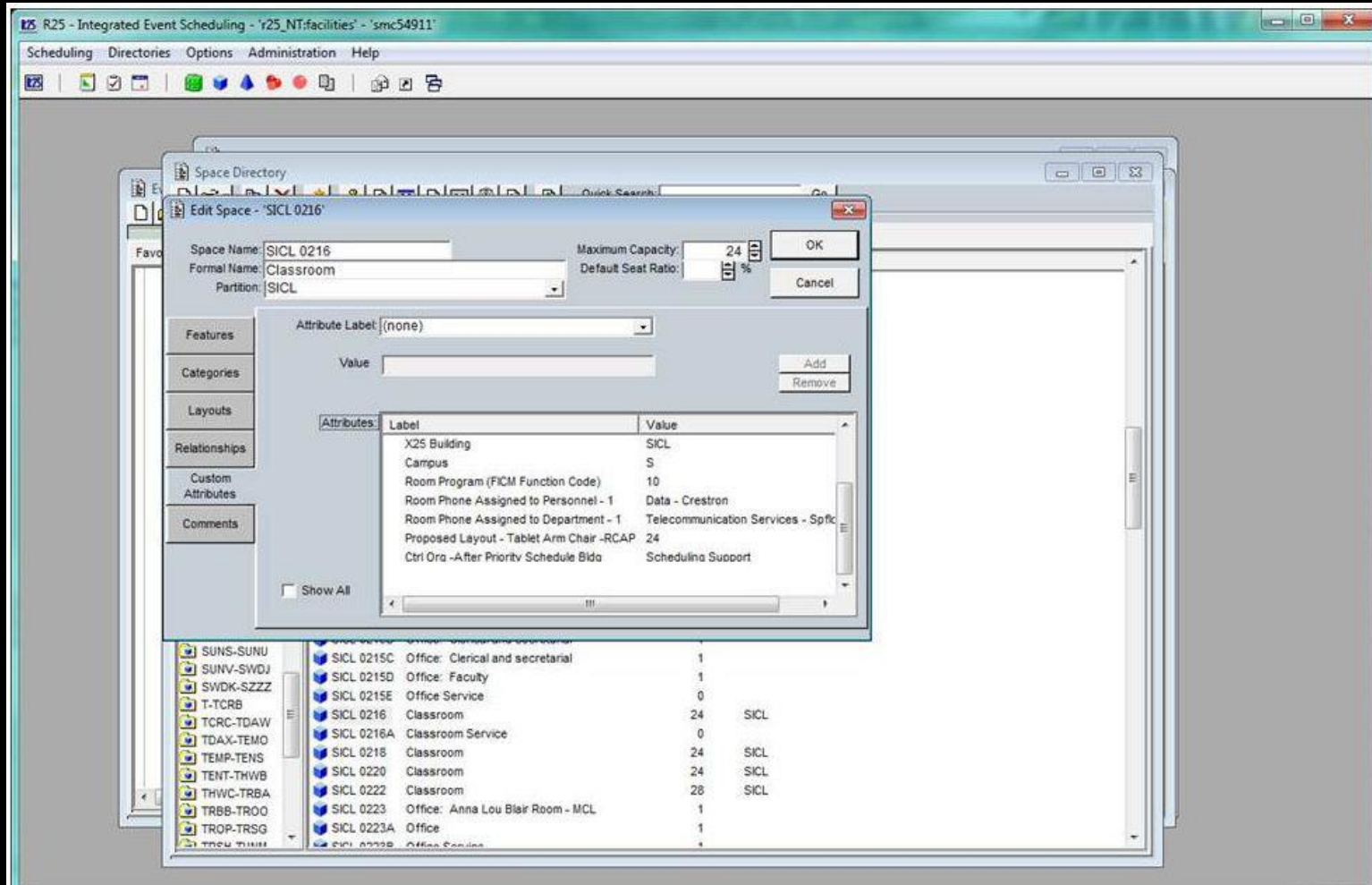
WITH THE UNIVERSITY FOR 12 YEARS  
KRISTA MOVED TO THE POSITION OF  
UNIVERSITY FACILITIES ANALYST  
SUPPORT SERVICES  
SEPTEMBER 2012



KRISTA BASSEN  
UNIVERSITY  
FACILITIES  
ANALYST



# KRISTA IS RESPONSIBLE FOR THE R25 DATABASE FOR ALL SPACES ON CAMPUS







PILAR KARLEN

ENERGY  
MANAGER



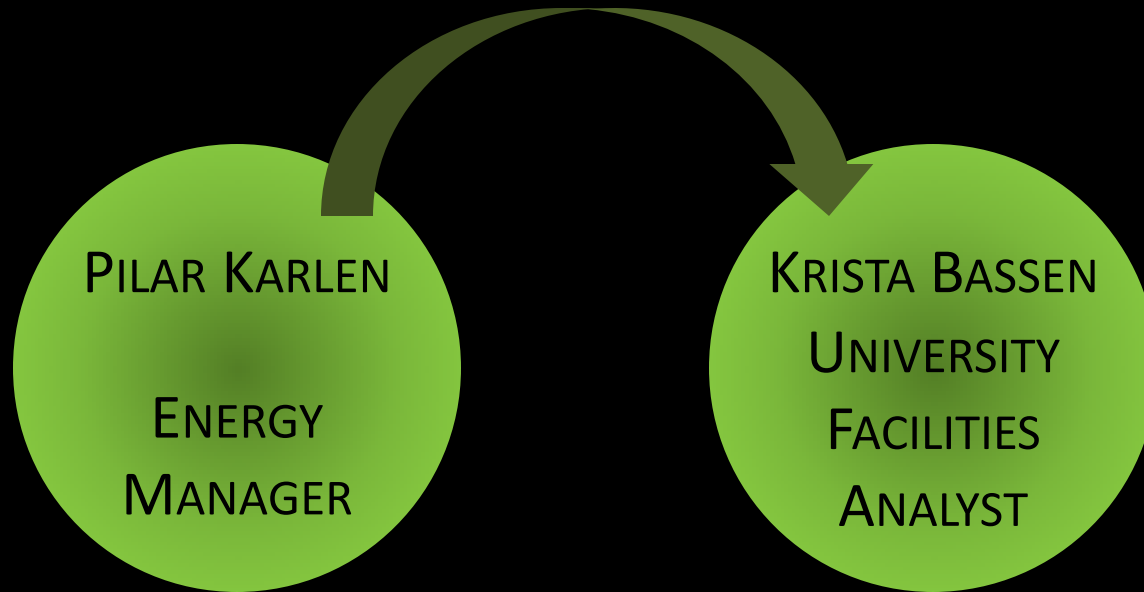
KRISTA BASSEN

UNIVERSITY  
FACILITIES  
ANALYST

MET IN DECEMBER 2012 AND REALIZED

THE TWO DATABASES WERE COMPLETELY INDEPENDENT OF EACH OTHER.

THERE WAS POTENTIAL BENEFIT IF THE INFORMATION WAS  
CONSOLIDATED



PILAR PROVIDED THE INFORMATION

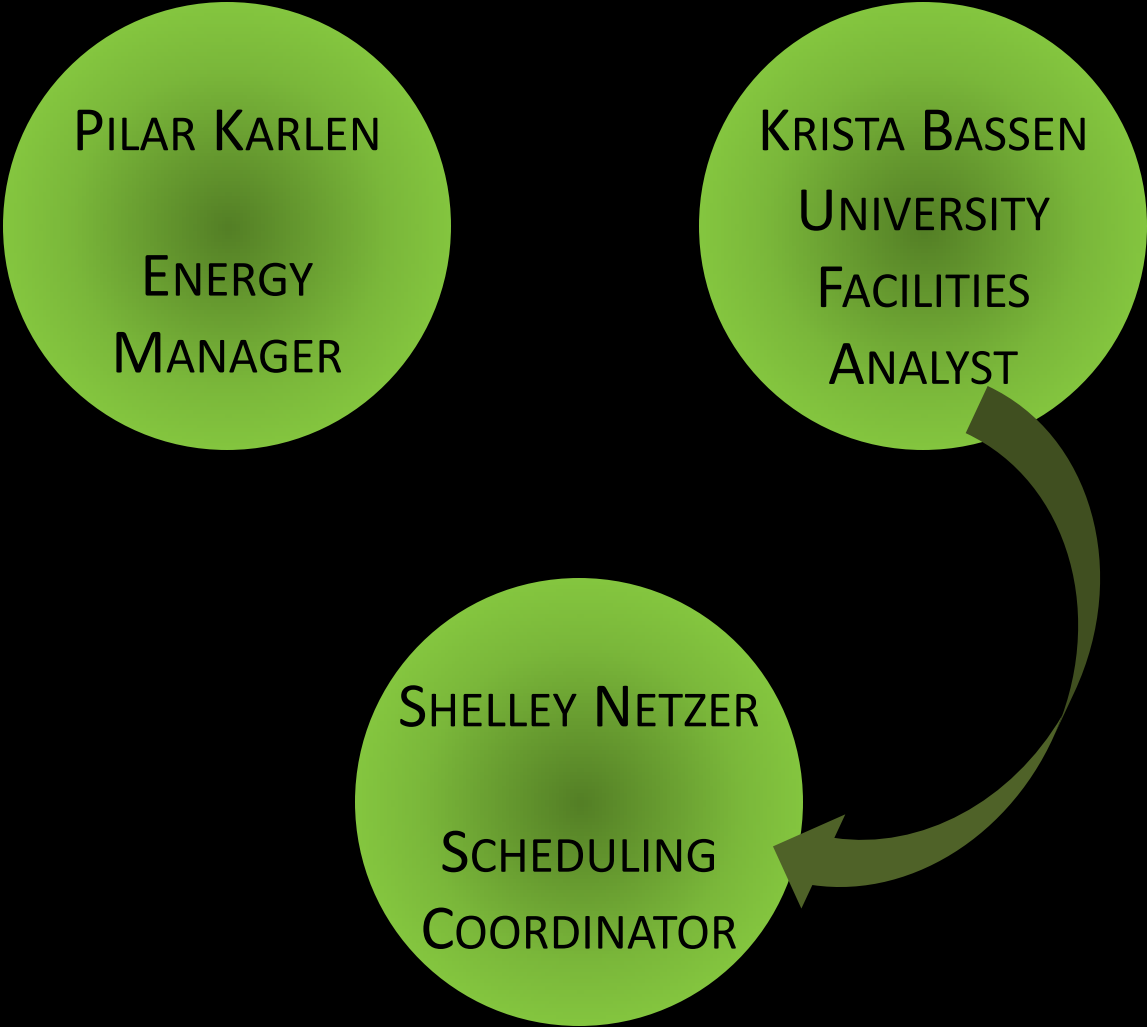
			CRAIG HALL	AHU-C	338	CHEEK HALL	AHU-3	150B
			CRAIG HALL	AHU-C	339	CHEEK HALL	AHU-3	150C
			CRAIG HALL	AHU-C	343	CHEEK HALL	AHU-3	150D
			CRAIG HALL	AHU-C	346	CHEEK HALL	AHU-3	150E
			CRAIG HALL	AHU-C	347	CHEEK HALL	AHU-3	160A
			CRAIG HALL	AHU-A	317A	CHEEK HALL	AHU-3	161A
			CRAIG HALL	AHU-A	317B	CHEEK HALL	AHU-3	161B
			GARST CAFETERIA	AHU-1		CHEEK HALL	AHU-3	163T
			GARST CAFETERIA	AHU-2		CHEEK HALL	AHU-3	164A
			GARST CAFETERIA	AHU-3		CHEEK HALL	AHU-3	164B
			GARST CAFETERIA	AHU-4		CHEEK HALL	AHU-3	165A
			ELLIS HALL	AHU-1		CHEEK HALL	AHU-3	166A
			ELLIS HALL	AHU-2		CHEEK HALL	AHU-3	166T
			ELLIS HALL	AHU-3		CHEEK HALL	AHU-3	167A
			ELLIS HALL	AHU-4		CHEEK HALL	AHU-3	167B
			ELLIS HALL	AHU-5		CHEEK HALL	AHU-3	167C
			ELLIS HALL	AHU-6		CHEEK HALL	AHU-3	167D
			GLASS HALL	1st Floor	All first floor spaces	CHEEK HALL	AHU-3	167E
			GLASS HALL	2nd Floor	All second floor spaces	CHEEK HALL	AHU-3	167F
			GLASS HALL	3rd Floor	All third floor spaces	CHEEK HALL	AHU-3	167G
			GLASS HALL	4th Floor	All fourth floor spaces	CHEEK HALL	AHU-3	167H
			HHPA	AHU-A		CHEEK HALL	AHU-3	167I
			HHPA	AHU-B		CHEEK HALL	AHU-3	167J
			HHPA	AHU-C		CHEEK HALL	AHU-3	167K
			HHPA	AHU-D		CHEEK HALL	AHU-3	167L
			HHPA	AHU-E		CHEEK HALL	AHU-3	167M
			HHPA	AHU-F		CHEEK HALL	AHU-3	183T
			HHPA	AHU-G		CHEEK HALL	AHU-2	201A
			HHPA	AHU-H		CHEEK HALL	AHU-2	201B
			HHPA	AHU-J		CHEEK HALL	AHU-2	203A
			HHPA	AHU-K		CHEEK HALL	AHU-2	203B
			HHPA	AHU-L		CHEEK HALL	AHU-2	203C
			HHPA	AHU-M		CHEEK HALL	AHU-2	203D
			HHPA	FCU-79		CHEEK HALL	AHU-2	203E
			HAMMONS STUDENT CENTER	AHU-13		CHEEK HALL	AHU-2	205A
			HAMMONS STUDENT CENTER	RAHU-1		CHEEK HALL	AHU-1	300A
			HAMMONS STUDENT CENTER	RAHU- 2		CHEEK HALL	AHU-1	300B
			HAMMONS STUDENT CENTER	RAHU- 3		CHEEK HALL	AHU-1	301T
			HAMMONS STUDENT CENTER	RAHU- 4		CHEEK HALL	AHU-1	309A
			HAMMONS STUDENT CENTER	RAHU- 5		CHEEK HALL	AHU-4	86M
			HAMMONS STUDENT CENTER	RAHU- 6		CRAIG HALL	AHU-D	100
			HAMMONS STUDENT CENTER	RAHU- 7		CRAIG HALL	AHU-E	101
			HAMMONS STUDENT CENTER	RAHU - 8		CRAIG HALL	AHU-A	315
			HAMMONS STUDENT CENTER	RAHU- 9		CRAIG HALL	AHU-A	316
			HAMMONS STUDENT CENTER	RAHU-10		CRAIG HALL	AHU-A	317
			HAMMONS STUDENT CENTER	RAHU-11		CRAIG HALL	AHU-A	318
			HAMMONS STUDENT CENTER	RAHU-12		CRAIG HALL	AHU-A	319
			HILL HALL	AHU-2	1	CRAIG HALL	AHU-A	320
			HILL HALL	AHU-2	1	CRAIG HALL	AHU-A	321
			HILL HALL	AHU-2	1	CRAIG HALL	AHU-B	323
			HILL HALL	AHU-2	1	CRAIG HALL	AHU-B	324
			HILL HALL	AHU-2	1	CRAIG HALL	AHU-B	325
			HILL HALL	AHU-2	1	CRAIG HALL	AHU-B	326
			HILL HALL	AHU-2	1	CRAIG HALL	AHU-B	328
			HILL HALL	AHU-2	1	CRAIG HALL	AHU-B	330
			HILL HALL	AHU-2	1	CRAIG HALL	AHU-B	331
			HILL HALL	AHU-2	1	CRAIG HALL	AHU-C	333
			HILL HALL	AHU-2	1	CRAIG HALL	AHU-C	334
			HILL HALL	AHU-2	1	CRAIG HALL	AHU-C	336
Building	Description	Room						
ART ANNEX	AHU-1	1						
ART ANNEX	AHU-1	2						
ART ANNEX	AHU-1	3						
ART ANNEX	AHU-1	4						
ART ANNEX	AHU-1	5						
ART ANNEX	AHU-2	6						
ART ANNEX	AHU-2	7						
ART ANNEX	AHU-2	8						
ART ANNEX	AHU-2	9						
ART ANNEX	AHU-1	11						
ART ANNEX	AHU-1	001A						
ART ANNEX	AHU-1	003A						
ART ANNEX	AHU-1	004T						
ART ANNEX	AHU-1	005A						
ART ANNEX	AHU-1	005B						
ART ANNEX	AHU-1	005C						
ART ANNEX	AHU-1	005D						
ART ANNEX	AHU-1	005G						
ART ANNEX	AHU-2	006A						
ART ANNEX	AHU-2	006B						
ART ANNEX	AHU-2	006C						
ART ANNEX	AHU-2	007A						
ART ANNEX	AHU-2	009A						
ART ANNEX	AHU-2	009B						
ART ANNEX	AHU-1	00A						
ART ANNEX	AHU-2	010A						
ART ANNEX	AHU-2	010B						
ART ANNEX	AHU-2	010C						
ART ANNEX	HTG							
CARRINGTON HALL	AHU-1							
CARRINGTON HALL	AHU-2							
CARRINGTON HALL	AHU-3							
CARRINGTON HALL	AHU-4							
CARRINGTON HALL	AHU-5							
CARRINGTON HALL	AHU-6							
CARRINGTON HALL	AC-AFS							
CARRINGTON HALL	AUDAHU	208						
CHEEK HALL	MZU-1	1						
CHEEK HALL	MZU-1	3						
CHEEK HALL	MZU-1	4						
CHEEK HALL	MZU-1	5						
CHEEK HALL	MZU-1	6						
CHEEK HALL	MZU-1	7						
CHEEK HALL	MZU-1	8						





KINGS STREET ANNEX	AHU-1	140	PACB (Strong hall)	AHU-3	106	PACB (Strong hall)	AHU-8	401
KINGS STREET ANNEX	AHU-1	141	PACB (Strong hall)	AHU-3	107	PACB (Strong hall)	AHU-8	402
KINGS STREET ANNEX	AHU-1	151	PACB (Strong hall)	AHU-3	109	PACB (Strong hall)	AHU-7	403
KINGS STREET ANNEX	AHU-1	152	PACB (Strong hall)	AHU-3	112	PACB (Strong hall)	AHU-7	404
KINGS STREET ANNEX	AHU-2	201	PACB (Strong hall)	AHU-3	113	PACB (Strong hall)	AHU-7	405
KINGS STREET ANNEX	AHU-2	202	PACB (Strong hall)	AHU-3	114	PACB (Strong hall)	AHU-11	,001
KINGS STREET ANNEX	AHU-2	203	PACB (Strong hall)	AHU-2	115	PACB (Strong hall)	AHU-11	,002
KINGS STREET ANNEX	AHU-2	204	PACB (Strong hall)	AHU-2	116	PACB (Strong hall)	AHU-11	,003
KINGS STREET ANNEX	AHU-2	205	PACB (Strong hall)	AHU-2	117	PACB (Strong hall)	AHU-11	,004
KINGS STREET ANNEX	AHU-2	206	PACB (Strong hall)	AHU-2	118	PACB (Strong hall)	AHU-11	,005
KINGS STREET ANNEX	AHU-2	207	PACB (Strong hall)	AHU-2	119	PACB (Strong hall)	AHU-3	100A
KINGS STREET ANNEX	AHU-2	208	PACB (Strong hall)	AHU-2	120	PACB (Strong hall)	AHU-3	100B
KINGS STREET ANNEX	AHU-2	209	PACB (Strong hall)	AHU-2	121	PACB (Strong hall)	AHU-3	100C
KINGS STREET ANNEX	AHU-2	210	PACB (Strong hall)	AHU-2	122	PACB (Strong hall)	AHU-3	100D
KINGS STREET ANNEX	AHU-2	211	PACB (Strong hall)	AHU-2	123	PACB (Strong hall)	AHU-3	100E
KINGS STREET ANNEX	AHU-2	212	PACB (Strong hall)	AHU-2	124	PACB (Strong hall)	AHU-3	100F
KINGS STREET ANNEX	AHU-2	213	PACB (Strong hall)	AHU-2	125	PACB (Strong hall)	AHU-3	100G
KINGS STREET ANNEX	AHU-2	214	PACB (Strong hall)	AHU-2	126	PACB (Strong hall)	AHU-3	100H
KINGS STREET ANNEX	AHU-2	215	PACB (Strong hall)	AHU-2	126	PACB (Strong hall)	AHU-3	100I
KINGS STREET ANNEX	AHU-2	216	PACB (Strong hall)	AHU-2	127	PACB (Strong hall)	AHU-3	100J
KINGS STREET ANNEX	AHU-2	217	PACB (Strong hall)	AHU-2	129	PACB (Strong hall)	AHU-3	101A
KINGS STREET ANNEX	AHU-2	218	PACB (Strong hall)	AHU-2	130	PACB (Strong hall)	AHU-2	102T
KINGS STREET ANNEX	AHU-2	219	PACB (Strong hall)	AHU-2	132	PACB (Strong hall)	AHU-3	103A
KINGS STREET ANNEX	AHU-2	220	PACB (Strong hall)	AHU-2	133	PACB (Strong hall)	AHU-3	106A
KINGS STREET ANNEX	AHU-2	221	PACB (Strong hall)	AHU-2	134	PACB (Strong hall)	AHU-3	106B
KINGS STREET ANNEX	AHU-2	222	PACB (Strong hall)	AHU-2	135	PACB (Strong hall)	AHU-2	131A
KINGS STREET ANNEX	AHU-2	224	PACB (Strong hall)	AHU-2	136	PACB (Strong hall)	AHU-2	131B
KINGS STREET ANNEX	AHU-2	240	PACB (Strong hall)	AHU-2	137	PACB (Strong hall)	AHU-2	131C
KINGS STREET ANNEX	AHU-2	241	PACB (Strong hall)	AHU-2	138	PACB (Strong hall)	AHU-2	131D
KINGS STREET ANNEX	AHU-2	250	PACB (Strong hall)	AHU-1	150	PACB (Strong hall)	AHU-2	131E
KINGS STREET ANNEX	AHU-2	251	PACB (Strong hall)	AHU-1	151	PACB (Strong hall)	AHU-2	131F
KINGS STREET ANNEX	AHU-2	252	PACB (Strong hall)	AHU-1	152	PACB (Strong hall)	AHU-2	131G
KINGS STREET ANNEX	AHU-2	260	PACB (Strong hall)	AHU-1	153	PACB (Strong hall)	AHU-1	150T
KINGS STREET ANNEX	AHU-1	102A	PACB (Strong hall)	AHU-1	154	PACB (Strong hall)	AHU-1	153A
KINGS STREET ANNEX	AHU-1	110A	PACB (Strong hall)	AHU-1	155	PACB (Strong hall)	AHU-1	157A
KINGS STREET ANNEX	AHU-1	118T	PACB (Strong hall)	AHU-1	156	PACB (Strong hall)	AHU-1	
KINGS STREET ANNEX	AHU-2	203A	PACB (Strong hall)	AHU-1	157	PACB (Strong hall)	AHU-9	
KINGS STREET ANNEX	AHU-2	220T	PACB (Strong hall)	AHU-1	158	PACB (Strong hall)	AHU-10	
KINGS STREET ANNEX	AHU-2	223T	PACB (Strong hall)	AHU-1	159	PACB (Strong hall)	AHU-4	
LIBRARY	AHU		PACB (Strong hall)	AHU-1	160	PACB (Strong hall)	AHU-5	
PLASTER SPORTS COMPLEX	AHU-1		PACB (Strong hall)	AHU-1	161	PACB (Strong hall)	AHU-6	
PLASTER SPORTS COMPLEX	AHU-2		PACB (Strong hall)	AHU-1	162	PACB (Strong hall)		
PLASTER SPORTS COMPLEX	AHU-3		PACB (Strong hall)	AHU-1	163	PACB (Strong hall)		
PLASTER SPORTS COMPLEX	AHU-4		PACB (Strong hall)	AHU-1	164	PUMMIL HALL	AHU-1	WHOLE BUILDING
PLASTER SPORTS COMPLEX	AHU-5		PACB (Strong hall)	AHU-1	165	SICELUFF HALL	AHU 401	1st floor
PLASTER SPORTS COMPLEX	AHU-6		PACB (Strong hall)	AHU-8	200	SICELUFF HALL	AHU 402	2nd floor
PLASTER SPORTS COMPLEX	AHU-7		PACB (Strong hall)	AHU-8	201	SICELUFF HALL	AHU 403	3rd floor
PLASTER SPORTS COMPLEX	AHU-8		PACB (Strong hall)	AHU-8	202	SICELUFF HALL	AHU 404	4th floor
PLASTER SPORTS COMPLEX	11EFS		PACB (Strong hall)	AHU-7	203	TELECOM DPT	AHU -1	
PLASTER STUDENT UNION	AHU-1		PACB (Strong hall)	AHU-7	204			
PLASTER STUDENT UNION	AHU-2	Theatre	PACB (Strong hall)	AHU-7	205			All Spaces except
PLASTER STUDENT UNION	AHU-3		PACB (Strong hall)	AHU-8	300	TEMPLE HALL	AHU 1-16	Rooms 1, 2 & 3
PLASTER STUDENT UNION	AHU - 4	Parliamentary rooms	PACB (Strong hall)	AHU-8	301	TEMPLE HALL	AHU 17	Lecture Room 2
PACB (Strong hall)	AHU-3	100	PACB (Strong hall)	AHU-8	302	TEMPLE HALL	AHU 17	Lecture Room 3
PACB (Strong hall)	AHU-3	101	PACB (Strong hall)	AHU-7	303	TEMPLE HALL	AHU 17	Lecture Room 1
PACB (Strong hall)	AHU-3	103	PACB (Strong hall)	AHU-7	304	WELLS HOUSE	S-Lights	
PACB (Strong hall)	AHU-3	104	PACB (Strong hall)	AHU-7	305	WELLS HOUSE	N-Lights	
PACB (Strong hall)	AHU-3	105	PACB (Strong hall)	AHU-8	400			

THE NEXT STEP WAS TO BRING SHELLEY NETZER INTO THE SCHEME





WITH THE UNIVERSITY FOR OVER 17 YEARS  
SHELLEY IS THE  
SCHEDULING COORDINATOR  
SUPPORT SERVICES



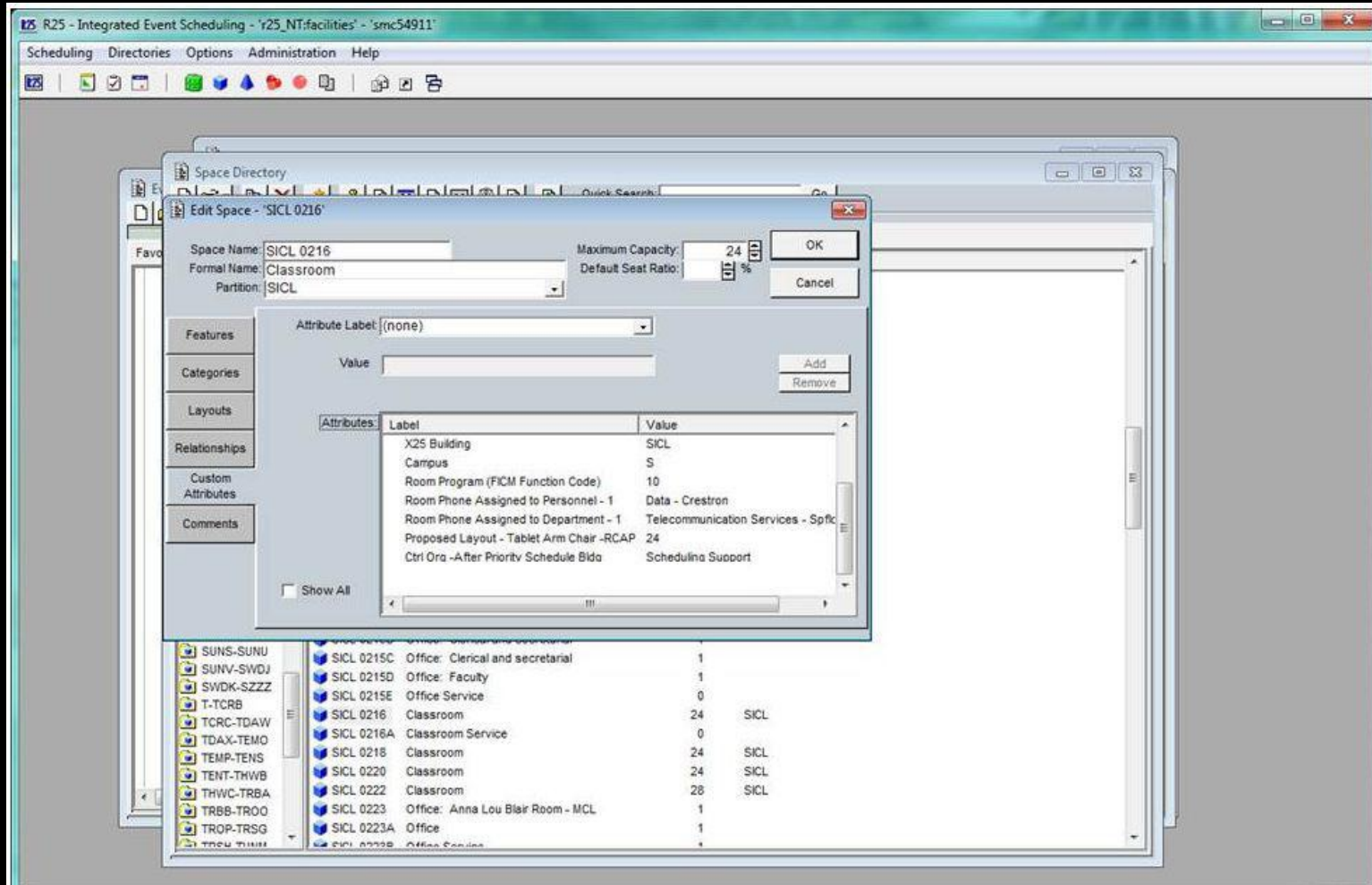
# SHELLEY NETZER

## SCHEDULING COORDINATOR

RESPONSIBLE FOR THE COORDINATION OF SCHEDULING OF CLASSES

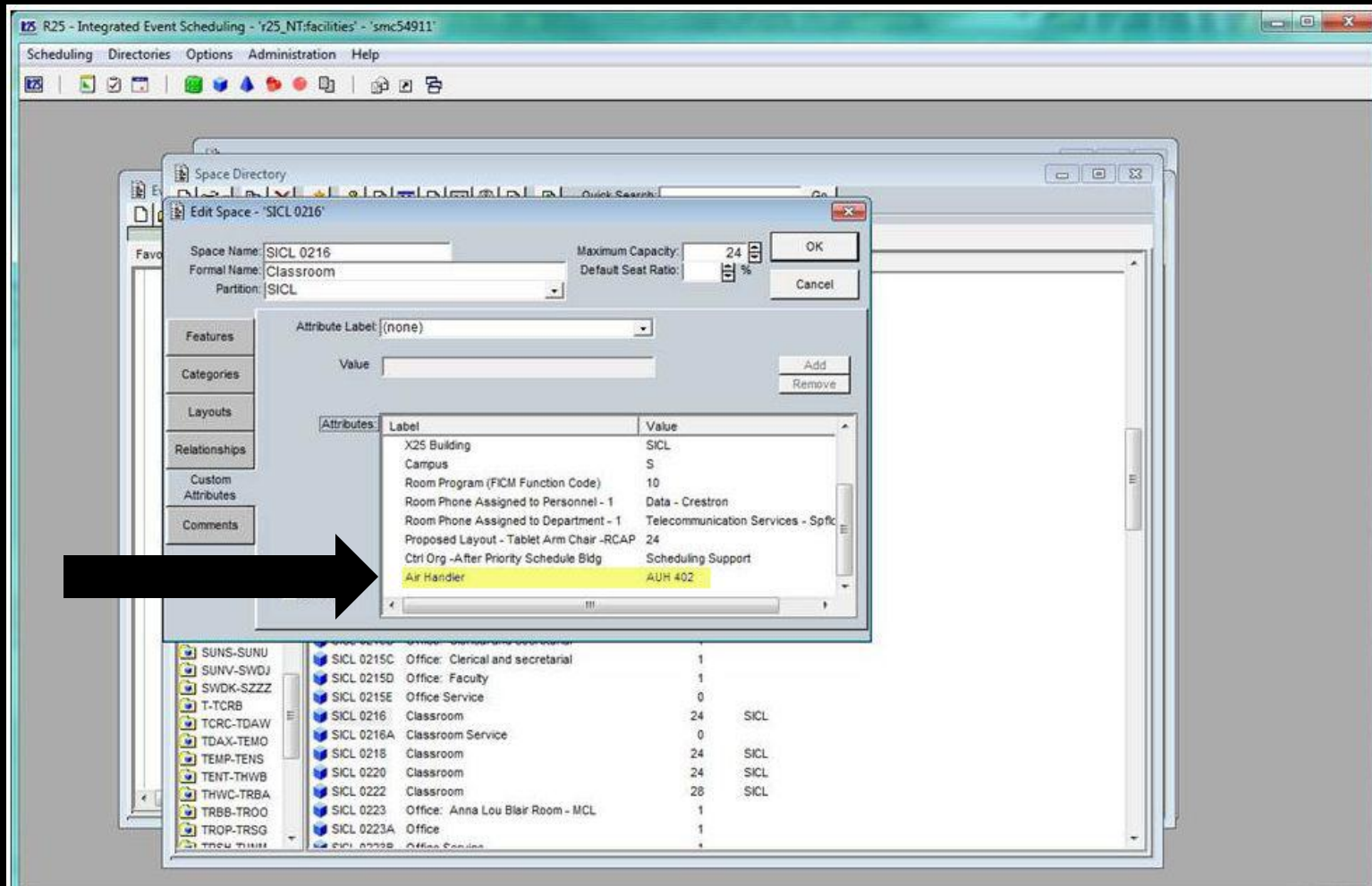
Start Date	BLDG_CODE	Begin Time	BLDG Room	room_long	End Time	event_type_name	event_name	event_title	seats
6/17/2013	CHEK								
		17:30:00	CHEK 0172	Classroom	19:10:00	LECT	MTH 352 301	Intermediate Algebra I	541
			CHEK 0209	Computer Classroom	19:10:00	LECT	MTH 352 301	Intermediate Algebra II	1182
		18:00:00	CHEK 0174	Classroom	20:50:00	LECT	ENG 711 301	Seminar: Poetry	560
		17:30:00	CHEK 0202	Classroom	19:10:00	LECT	MTH 335 301	College Algebra	895
	GLAS								
		17:30:00	GLAS 0235	Classroom	20:20:00	LECT	MKT 772 301	Marketing Management	1000
		0:01:00	GLAS 0108	Classroom - (TV after 4pm beginning Fall 2013)	23:59:00	Scheduling Support	GLAS 0108 - Room Closed - Summer 2013	Room Closed	2377
		17:30:00	GLAS 0226	Classroom	20:20:00	LECT	MGT 784 302	Organizational Behavior	882
			GLAS 0236	Distance Education Classroom	20:20:00	LECT	MKT 776 802	International Marketing	840
	HILL								
		16:00:00	HILL 0315	Classroom	17:45:00	LECT	PSY 720 A	Indv Intelligence Testing	445
		17:30:00	HILL 0002	Classroom	18:50:00	LECT	CPD 355 750	Prin of Human Development	1928
		18:00:00	HILL 0463C	Class Laboratory	21:00:00	LABR	PSY 720 301	Indv Intelligence Testing	200
	KARL								
		13:00:00	KARL 0234	Distance Education Classroom	17:00:00	LECT	SWK 699 802	Child and Family Play Therapy	644
		15:00:00	KARL 0239	Classroom - (TV after 4pm)	17:30:00	LECT	SPE 715 802	Foundations in Special Ed	982
		16:00:00	KARL 0232	Classroom	18:05:00	LECT	PSY 320 301	Psychology and the Law	719
		17:30:00	KARL 0235	Classroom	18:45:00	LECT	COM 115 301	Fundamentals Public Speaking	674
		18:00:00	KARL 0238	Classroom	20:50:00	LECT	SWK 786 301	Foundations/Soc Work Research	850
	MCOA	18:00:00	MCOA 0316	Class Laboratory	20:50:00	COMB	Kiv 106 301 MMP	Fitness for Living	4723
	PCOB	8:00:00	PCOB 0125	Distance Education Classroom	18:00:00	LECT	SPE 712 001	Instructnl Technq Orient & Mob	251
	PROF								
		13:30:00	PROF 0371	Class Laboratory	17:20:00	LABR	BMS 307 003	Human Anatomy	708
		16:00:00	PROF 0234	Classroom	17:50:00	LECT	PAS 780 000	Pharmacotherapeutics I	1158
		17:30:00	PROF 0371	Class Laboratory	19:20:00	LABR	BMS 307 004	Human Anatomy	708
	PURM	17:30:00	PURM 0108	Classroom	20:20:00	LECT	SAE 721 300	Intro to Student Affairs	554
	STRO	17:30:00							
			STRO 0300	Classroom	18:50:00	LECT	PLS 103 750	Missouri Government	1183
			STRO 0302	Classroom	18:50:00	LECT	PLS 101 750	American Democracy	1051
6/18/2013	CHEK								
		17:30:00	CHEK 0172	Classroom	19:10:00	LECT	MTH 352 301	Intermediate Algebra I	541
			CHEK 0175	Classroom	18:50:00	LECT	LLT 121 750	Classical Mythology	679
			CHEK 0209	Computer Classroom	19:10:00	LECT	MTH 352 301	Intermediate Algebra II	1182
		17:30:00	CHEK 0202	Classroom	19:10:00	LECT	MTH 335 301	College Algebra	895
	DACP	19:00:00	DACP 0205	Class Laboratory	20:50:00	LABR	AGS 362 902	Introduction to Riding	534
	GLAS								
		0:01:00	GLAS 0108	Classroom - (TV after 4pm beginning Fall 2013)	23:59:00	Scheduling Support	GLAS 0108 - Room Closed - Summer 2013	Room Closed	2377
		17:30:00	GLAS 0102	Classroom	20:20:00	LECT	FIN 780 301	Advanced Financial Management	2377

# SHELLEY ASSISTS IN THE MAINTENANCE OF THE R25 DATABASE



SHELLEY ENTERED THE INFORMATION PROVIDED BY PILAR

EVERY SPACE IS NOW ASSOCIATED WITH THE AIR HANDLER UNIT THAT CONTROLS IT



Start Date	BUDG_CODE	Begin Time	BUDG Room	room_long	End Time	event_type_name	event_name	event_title	sqft
6/17/2013	CHEK								
		17:30:00	CHEK 0172	Classroom	19:10:00	LECT	MTH 301 301	Intermediate Algebra I	541
			CHEK 0209	Computer Classroom	19:10:00	LECT	MTH 302 301	Intermediate Algebra II	1180
		18:00:00	CHEK 0174	Classroom	20:50:00	LECT	ENG 711 301	Seminar: Poetry	560
		17:30:00	CHEK 0202	Classroom	19:10:00	LECT	MTH 135 301	College Algebra	895
	GLAS								
		17:30:00	GLAS 0230	Classroom	20:20:00	LECT	MKT 772 301	Marketing Management	1000
		0:01:00	GLAS 0108	Classroom - (TV after 4pm beginning Fall 2013)	23:59:00	Scheduling Support	GLAS 0108 - Room Closed - Summer 2013	Room Closed	2377
		17:30:00							
			GLAS 0226	Classroom	20:20:00	LECT	MGT 784 302	Organizational Behavior	882
			GLAS 0236	Distance Education Classroom	20:20:00	LECT	MKT 776 802	International Marketing	840
	HILL								
		16:00:00	HILL 0315	Classroom	17:45:00	LECT	PSY 720 A	Indv Intelligence Testing	445
		17:30:00	HILL 0002	Classroom	18:50:00	LECT	CPD 155 750	Prin of Human Development	1928
		18:00:00	HILL 0463C	Class Laboratory	21:00:00	LABR	PSY 720 301	Indv Intelligence Testing	200
	KARL								
		13:00:00	KARL 0234	Distance Education Classroom	17:00:00	LECT	SWK 699 802	Child and Family Play Therapy	644
		15:00:00	KARL 0239	Classroom - (TV after 4pm)	17:30:00	LECT	SPE 715 802	Foundations in Special Ed	982
		16:00:00	KARL 0232	Classroom	18:05:00	LECT	PSY 320 301	Psychology and the Law	719
		17:30:00	KARL 0235	Classroom	18:45:00	LECT	COM 115 301	Fundamentals Public Speaking	674
		18:00:00	KARL 0238	Classroom	20:50:00	LECT	SWK 786 301	Foundations/Soc Work Research	850
	MCOA	18:00:00	MCOA 0316	Class Laboratory	20:50:00	COMB	Kiv 106 301 MMP	Fitness for Living	4723
	PCOB	8:00:00	PCOB 0125	Distance Education Classroom	18:00:00	LECT	SPE 712 001	Instructnl Technq Orient & Mob	251
	PROF								
		15:30:00	PROF 0371	Class Laboratory	17:20:00	LABR	BMS 307 003	Human Anatomy	708
		16:00:00	PROF 0234	Classroom	17:50:00	LECT	PAS 780 000	Pharmacotherapeutics I	1158
		17:30:00	PROF 0371	Class Laboratory	19:20:00	LABR	BMS 307 004	Human Anatomy	708
	PURM	17:30:00	PURM 0108	Classroom	20:20:00	LECT	SAE 721 300	Intro to Student Affairs	554
	STRO	17:30:00							
			STRO 0300	Classroom	18:50:00	LECT	PLS 103 750	Missouri Government	1180
			STRO 0302	Classroom	18:50:00	LECT	PLS 101 750	American Democracy	1051
6/18/2013	CHEK								
		17:30:00							
			CHEK 0172	Classroom	19:10:00	LECT	MTH 301 301	Intermediate Algebra I	541
			CHEK 0175	Classroom	18:50:00	LECT	LLT 121 750	Classical Mythology	679
			CHEK 0209	Computer Classroom	19:10:00	LECT	MTH 302 301	Intermediate Algebra II	1180
		17:30:00	CHEK 0202	Classroom	19:10:00	LECT	MTH 135 301	College Algebra	895
	DACP	19:00:00	DACP 0205	Class Laboratory	20:50:00	LABR	AGS 362 902	Introduction to Riding	534
	GLAS								
		0:01:00	GLAS 0108	Classroom - (TV after 4pm beginning Fall 2013)	23:59:00	Scheduling Support	GLAS 0108 - Room Closed - Summer 2013	Room Closed	2377
		17:30:00	GLAS 0102	Classroom	20:20:00	LECT	FIN 780 301	Advanced Financial Management	2377



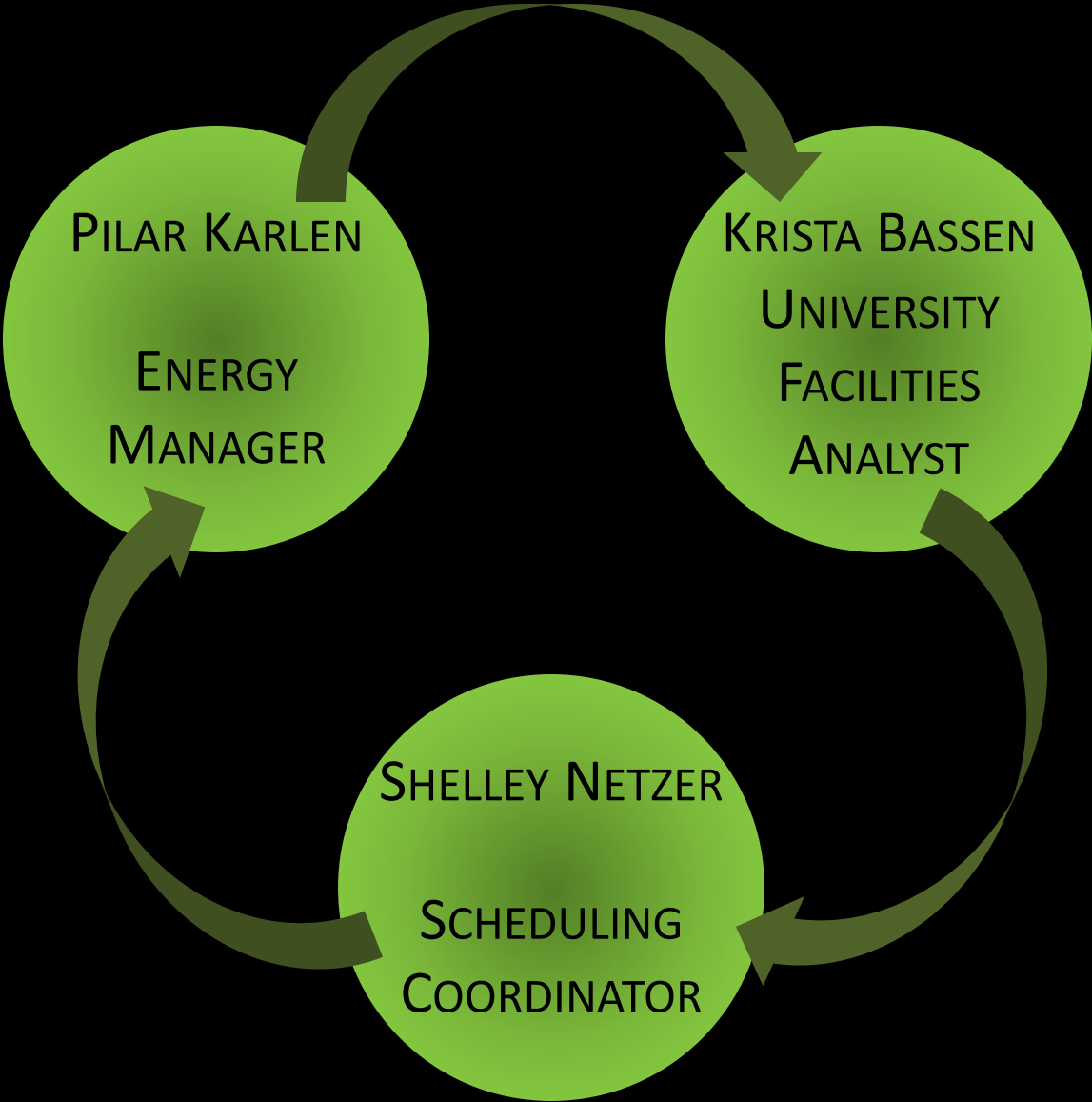
Start Date	BLDG_CODE	Begin Time	BLDG Room	room_long	End Time	event_type_name	event_name	event_title	sqft
6/17/2013	CHEX								
		17:30:00	CHEX 0172	Classroom	19:10:00	LECT	MTH 301 301	Intermediate Algebra I	541
			CHEX 0209	Computer Classroom	19:10:00	LECT	MTH 302 301	Intermediate Algebra II	1180
		18:00:00	CHEX 0174	Classroom	20:50:00	LECT	ENG 711 301	Seminar: Poetry	560
		17:30:00	CHEX 0202	Classroom	19:10:00	LECT	MTH 135 301	College Algebra	895
	GLAS								
		17:30:00	GLAS 0230	Classroom	20:20:00	LECT	MKT 772 301	Marketing Management	1000
		0:01:00	GLAS 0108	Classroom - (TV after 4pm beginning Fall 2013)	23:59:00	Scheduling Support	GLAS 0108 - Room Closed - Summer 2013	Room Closed	2377
		17:30:00							
			GLAS 0226	Classroom	20:20:00	LECT	MGT 784 302	Organizational Behavior	882
			GLAS 0236	Distance Education Classroom	20:20:00	LECT	MKT 776 802	International Marketing	840
	HILL								
		16:00:00	HILL 0315	Classroom	17:45:00	LECT	PSY 720 A	Indv Intelligence Testing	445
		17:30:00	HILL 0002	Classroom	18:50:00	LECT	CPD 155 750	Prin of Human Development	1928
		18:00:00	HILL 0463C	Class Laboratory	21:00:00	LABR	PSY 720 301	Indv Intelligence Testing	200
	KARL								
		13:00:00	KARL 0234	Distance Education Classroom	17:00:00	LECT	SWK 699 802	Child and Family Play Therapy	644
		15:00:00	KARL 0239	Classroom - (TV after 4pm)	17:30:00	LECT	SPE 715 802	Foundations in Special Ed	982
		16:00:00	KARL 0232	Classroom	18:05:00	LECT	PSY 320 301	Psychology and the Law	719
		17:30:00	KARL 0235	Classroom	18:45:00	LECT	COM 115 301	Fundamentals Public Speaking	674
		18:00:00	KARL 0238	Classroom	20:50:00	LECT	SWK 786 301	Foundations/Soc Work Research	850
	MCOA	18:00:00	MCOA 0316	Class Laboratory	20:50:00	COMB	kih 106 301 MMP	Fitness for Living	4723
	PCOB	8:00:00	PCOB 0125	Distance Education Classroom	18:00:00	LECT	SPE 712 001	Instructnl Technq Orient & Mob	251
	PROF								
		13:30:00	PROF 0371	Class Laboratory	17:20:00	LABR	BMS 307 003	Human Anatomy	708
		16:00:00	PROF 0234	Classroom	17:50:00	LECT	PAS 780 000	Pharmacotherapeutics I	1158
		17:30:00	PROF 0371	Class Laboratory	19:20:00	LABR	BMS 307 004	Human Anatomy	708
	PUMM	17:30:00	PUMM 0108	Classroom	20:20:00	LECT	SAE 721 300	Intro to Student Affairs	554
	STRO	17:30:00							
			STRO 0300	Classroom	18:50:00	LECT	PLS 103 750	Missouri Government	1180
			STRO 0302	Classroom	18:50:00	LECT	PLS 101 750	American Democracy	1051
6/18/2013	CHEX								
		17:30:00							
			CHEX 0172	Classroom	19:10:00	LECT	MTH 301 301	Intermediate Algebra I	541
			CHEX 0175	Classroom	18:50:00	LECT	LLT 121 750	Classical Mythology	679
			CHEX 0209	Computer Classroom	19:10:00	LECT	MTH 302 301	Intermediate Algebra II	1180
		17:30:00	CHEX 0202	Classroom	19:10:00	LECT	MTH 135 301	College Algebra	895
	DACP	19:00:00	DACP 0205	Class Laboratory	20:50:00	LABR	AGS 362 902	Introduction to Riding	534
	GLAS								
		0:01:00	GLAS 0108	Classroom - (TV after 4pm beginning Fall 2013)	23:59:00	Scheduling Support	GLAS 0108 - Room Closed - Summer 2013	Room Closed	2377
		17:30:00	GLAS 0102	Classroom	20:20:00	LECT	FIN 780 301	Advanced Financial Management	2377

# THE ADDITION OF THE INFORMATION ON THE AIR HANDLER UNITS PRESENTS THE POTENTIAL FOR ENERGY SAVINGS

Start Date	BLDG_CODE	Air Handler	Begin Time	BLDG Room	room_long	End Time	event_type_name	event_name	event_title	Sqft	
6/17/2013		CHEK									
		[Null]	17:30:00								
				CHEK 0172	Classroom	19:10:00	LECT	MTH 352 301	Intermediate Algebra I	541	
				CHEK 0209	Computer Classroom	19:10:00	LECT	MTH 352 301	Intermediate Algebra II	1182	
			18:00:00	CHEK 0174	Classroom	20:50:00	LECT	ENG 711 301	Seminar: Poetry	560	
		AHU-2	17:30:00	CHEK 0202	Classroom	19:10:00	LECT	MTH 335 301	College Algebra	895	
		GLAS									
		AHU-2	17:30:00	GLAS 0235	Classroom	20:20:00	LECT	MKT 772 301	Marketing Management	1000	
		AHU-1	0:01:00	GLAS 0108	Classroom - ITV after 4pm beginning Fall 2013	23:59:00	Scheduling Support	Glaz 0108 - Room Closed - Summer 2013	Room Closed	2377	
		AHU-2	17:30:00								
				GLAS 0226	Classroom	20:20:00	LECT	MGT 784 302	Organizational Behavior	882	
				GLAS 0236	Distance Education Classroom	20:20:00	LECT	MKT 776 802	International Marketing	840	
		HILL									
		AHU-1									
			16:00:00	HILL 0315	Classroom	17:45:00	LECT	PSY 720 A	Indv Intelligence Testing	445	
			17:30:00	HILL 0002	Classroom	18:50:00	LECT	CPD 155 750	Prin of Human Development	1928	
		MDU-5	18:00:00	HILL 0463C	Class Laboratory	21:00:00	LABR	PSY 720 301	Indv Intelligence Testing	200	
		KARL	AHU-2 24/7								
			13:00:00	KARL 0234	Distance Education Classroom	17:00:00	LECT	SWK 699 802	Child and Family Play Therapy	644	
			15:00:00	KARL 0239	Classroom - ITV after 4pm	17:30:00	LECT	SPE 715 802	Foundations in Special Ed	982	
			16:00:00	KARL 0232	Classroom	18:05:00	LECT	PSY 320 301	Psychology and the Law	719	
			17:30:00	KARL 0235	Classroom	18:45:00	LECT	COM 115 301	Fundamentals Public Speaking	674	
			18:00:00	KARL 0238	Classroom	20:50:00	LECT	SWK 746 301	Foundations/Soc Work Research	850	
		MCOA	[Null]	18:00:00	MCOA 0316	Class Laboratory	20:50:00	COMB	kih 106 301 MMP	Fitness for Living	4723
		PCOB	[Null]	8:00:00	PCOB 0125	Distance Education Classroom	18:00:00	LECT	SPE 712 001	Instructnl Technq Orient & Mob	251
		PROF	[Null]								
			13:30:00	PROF 0371	Class Laboratory	17:20:00	LABR	BMS 307 003	Human Anatomy	708	
			16:00:00	PROF 0234	Classroom	17:50:00	LECT	PAS 780 000	Pharmacotherapeutics I	1158	
			17:30:00	PROF 0371	Class Laboratory	19:20:00	LABR	BMS 307 004	Human Anatomy	708	
		PURM	AHU-1	17:30:00	PURM 0108	Classroom	20:20:00	LECT	SAE 721 300	Intro to Student Affairs	554
		STRO	AHU-8	17:30:00							
				STRO 0300	Classroom	18:50:00	LECT	PLS 103 750	Missouri Government	1183	
				STRO 0302	Classroom	18:50:00	LECT	PLS 101 750	American Democracy	1053	
6/18/2013		CHEK									
		[Null]	17:30:00								
				CHEK 0172	Classroom	19:10:00	LECT	MTH 352 301	Intermediate Algebra I	541	
				CHEK 0175	Classroom	18:50:00	LECT	LLT 121 750	Classical Mythology	679	
				CHEK 0209	Computer Classroom	19:10:00	LECT	MTH 352 301	Intermediate Algebra II	1182	
		AHU-2	17:30:00	CHEK 0202	Classroom	19:10:00	LECT	MTH 335 301	College Algebra	895	
		DACP	[Null]	19:00:00	DACP 0205	Class Laboratory	20:50:00	LABR	AGS 362 902	Introduction to Riding	534
		GLAS									
		AHU-1									
			0:01:00	GLAS 0108	Classroom - ITV after 4pm beginning Fall 2013	23:59:00	Scheduling Support	Glaz 0108 - Room Closed - Summer 2013	Room Closed	2377	
			17:30:00	GLAS 0102	Classroom	20:20:00	LECT	FIN 780 301	Advanced Financial Management	2377	



# WORKING TOGETHER



WHAT SAVINGS CAN BE FOUND BY:

USING THE CONSOLIDATED INFORMATION TO DISCOVER WHICH  
AIR HANDLERS CAN BE CHANGED FROM:

OCCUPIED MODE

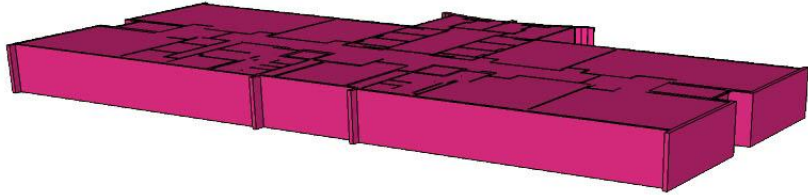
UNOCCUPIED MODE

OCCUPIED MODE = RANGE 70 – 75 DEGREES

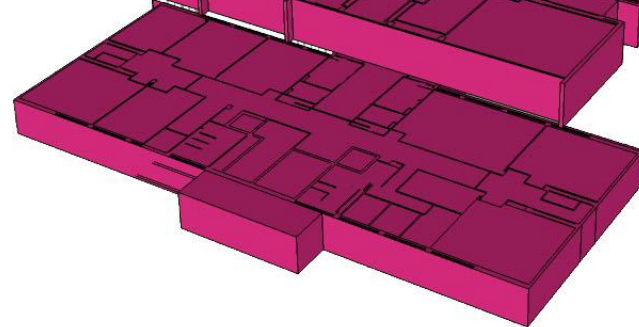
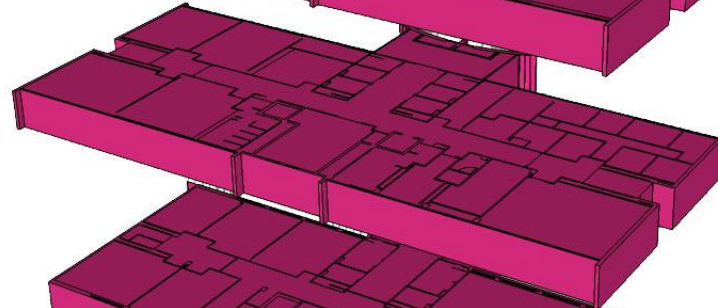
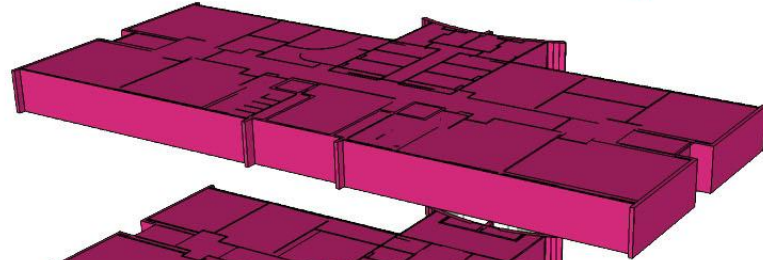
UNOCCUPIED MODE = MAXIMUM 80 DEGREES (SUMMER)

UNOCCUPIED MODE = MINIMUM 60 DEGREES (WINTER)

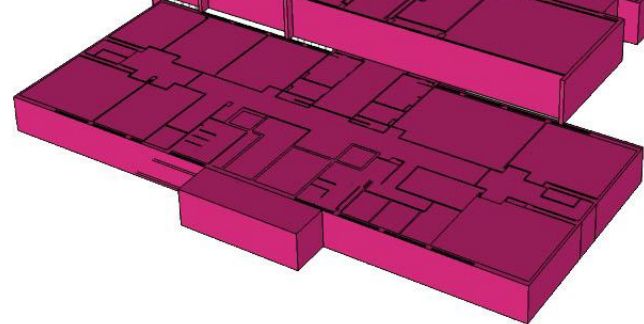
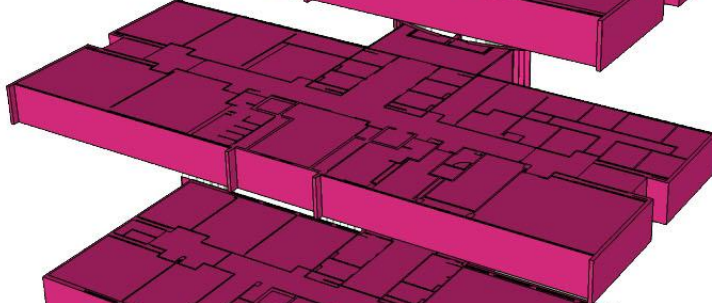
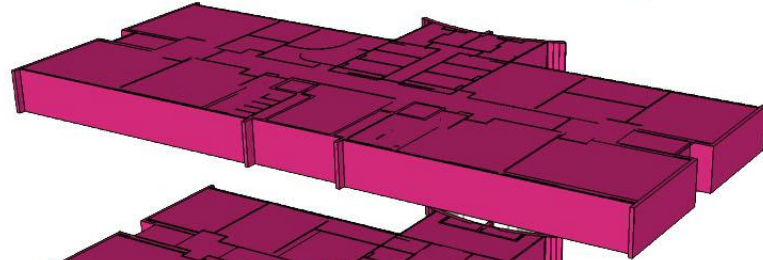
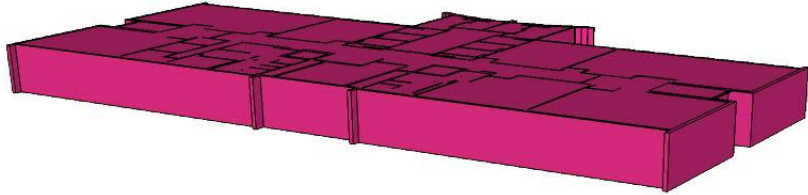




AIR HANDLER UNIT 1



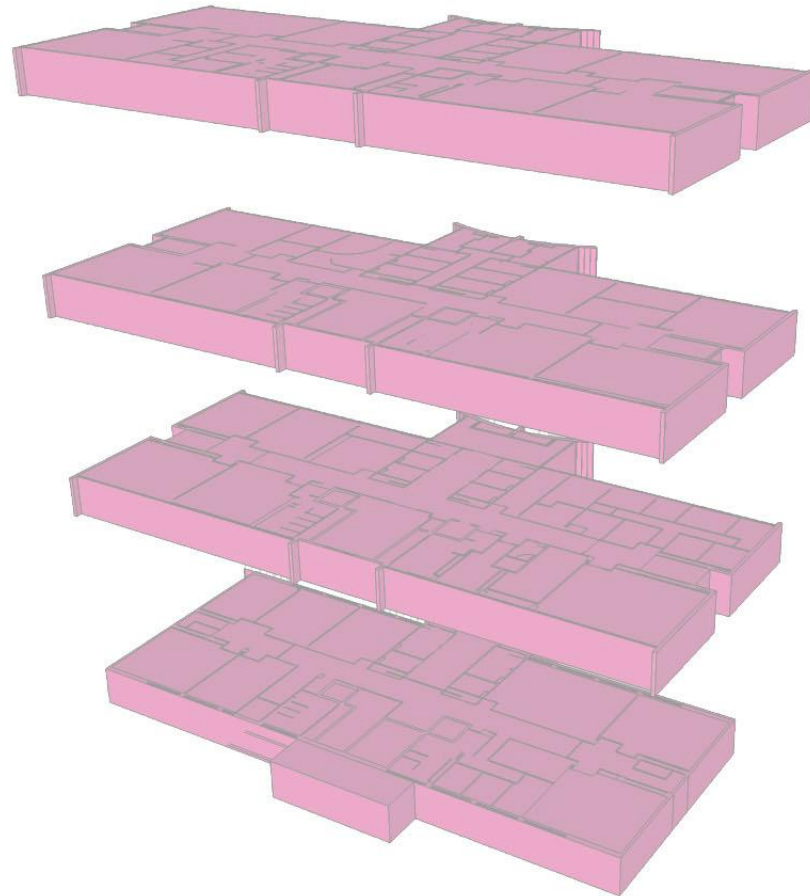
ONE AIR HANDLER UNIT CONTROLS ALL OF PUMMILL HALL



AIR HANDLER UNIT 1

OCCUPIED MODE



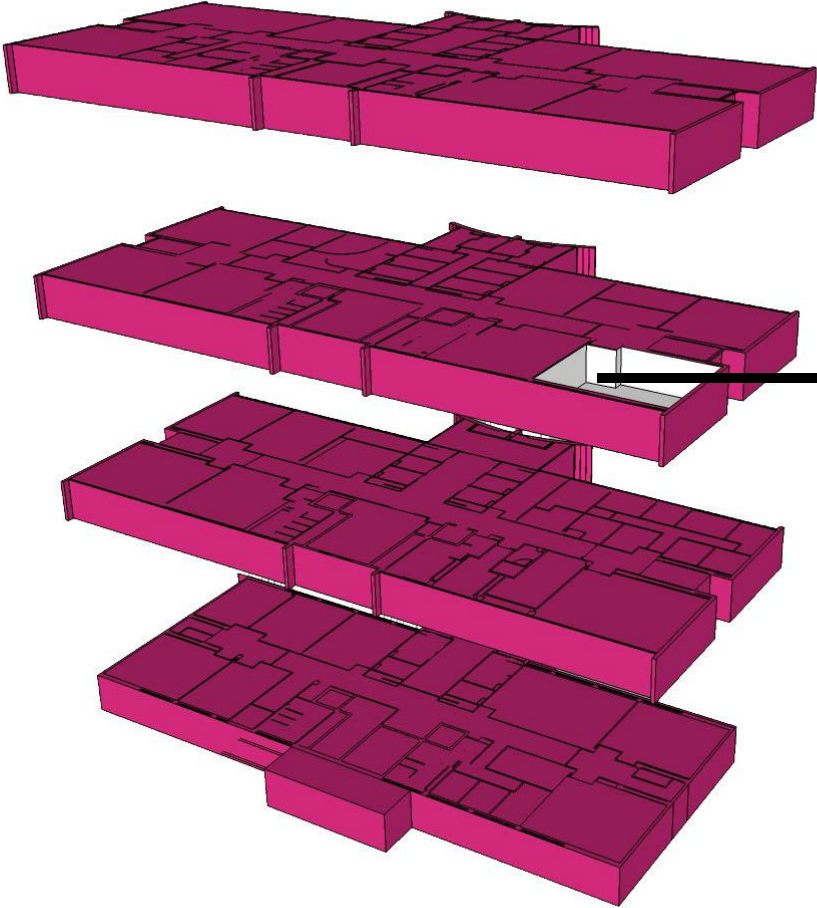


UNOCCUPIED MODE



ONE CLASS WAS SCHEDULED ON THE  
THIRD FLOOR AFTER 5:00.

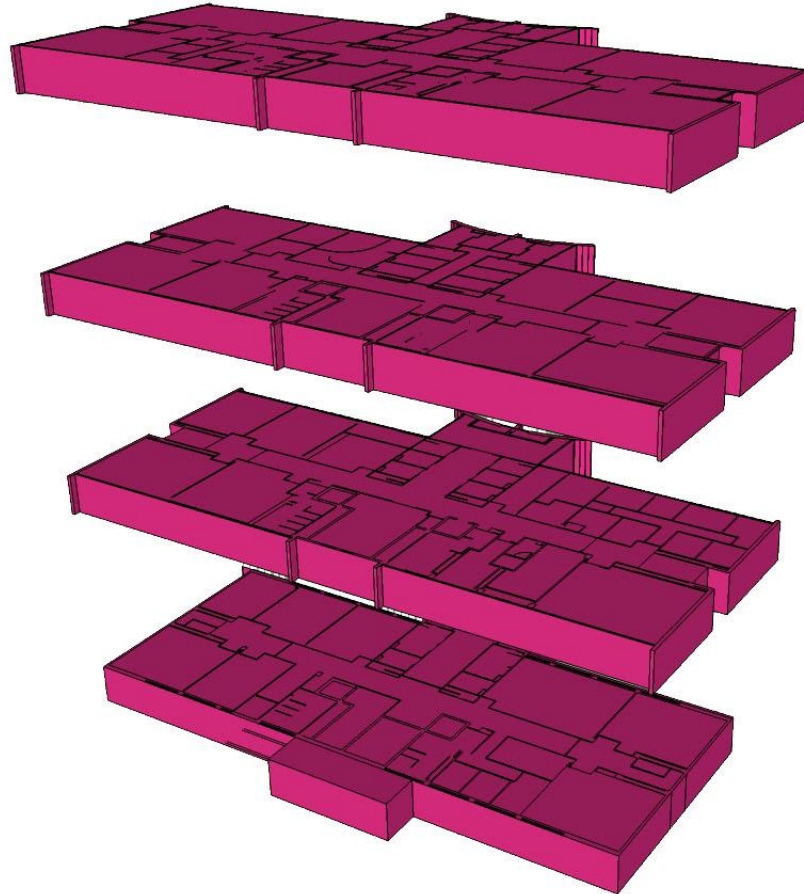
AIR HANDLER UNIT 1



ROOM 308

PUMMILL HALL

WAS SUCCESSFULLY MOVED TO A  
BUILDING THAT WILL REMAIN IN  
OCCUPIED MODE AFTER 5:00.

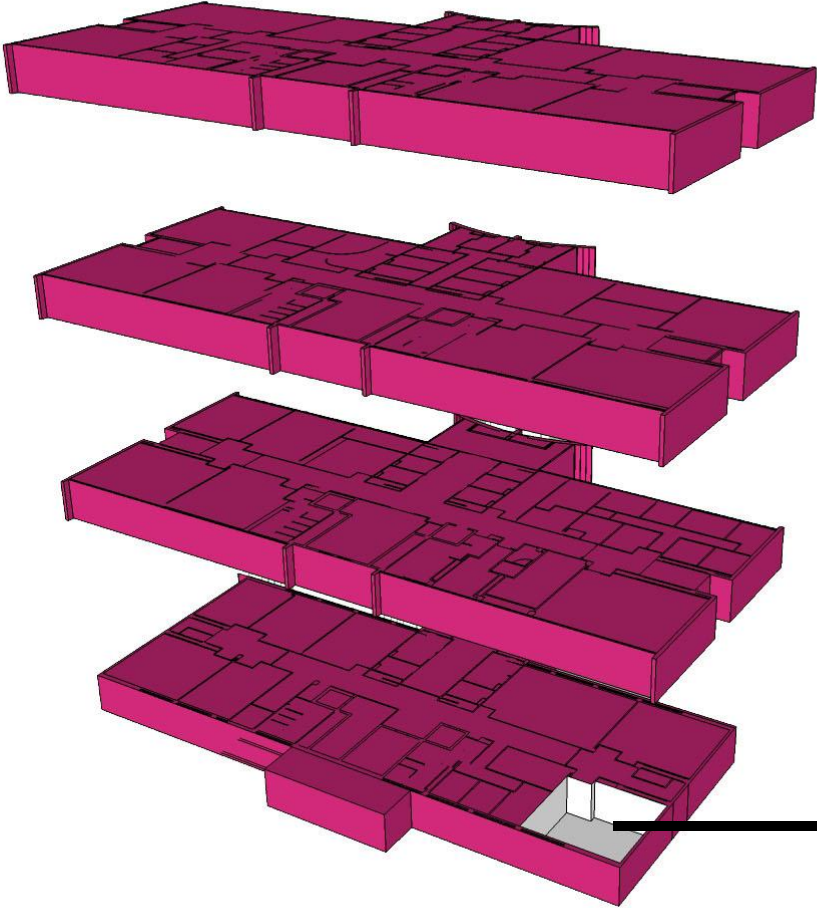


AIR HANDLER UNIT 1

OCCUPIED MODE

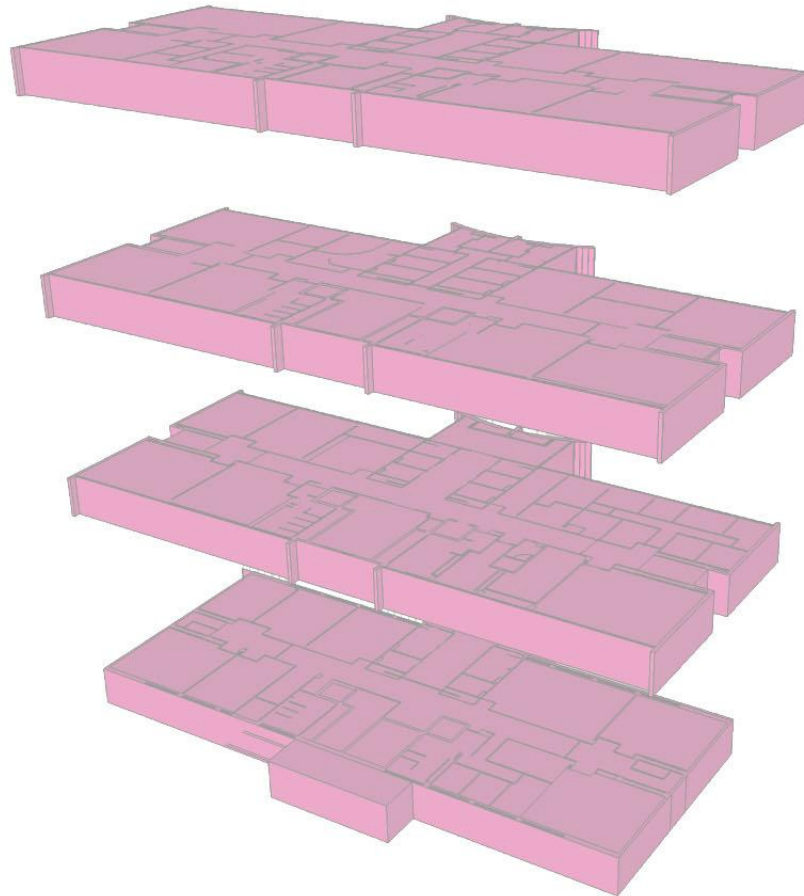
ONE CLASS REMAINS SCHEDULED ON  
THE FIRST FLOOR AFTER 5:00.

AIR HANDLER UNIT 1



ROOM 108

PUMMILL HALL



IF THE CLASS IS SUCCESSFULLY MOVED TO A BUILDING THAT WILL REMAIN IN  
OCCUPIED MODE  
ALL OF PUMMILL HALL MAY BE MOVED TO UNOCCUPIED MODE AT 5:00

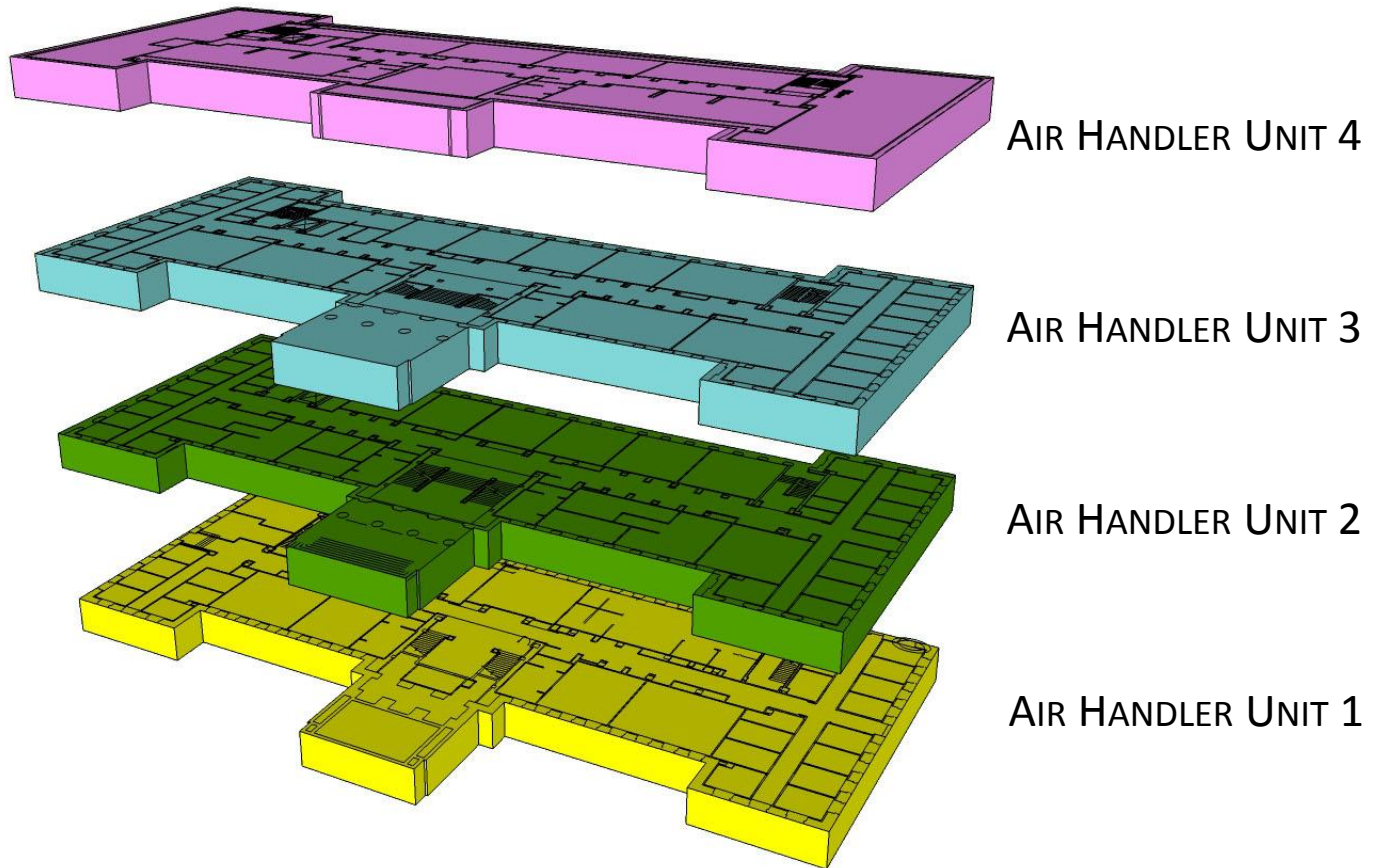
SAVINGS  
9.2% REDUCTION

SUMMER SEMESTER – \$736

PER YEAR– \$4,631

PUMMILL HALL

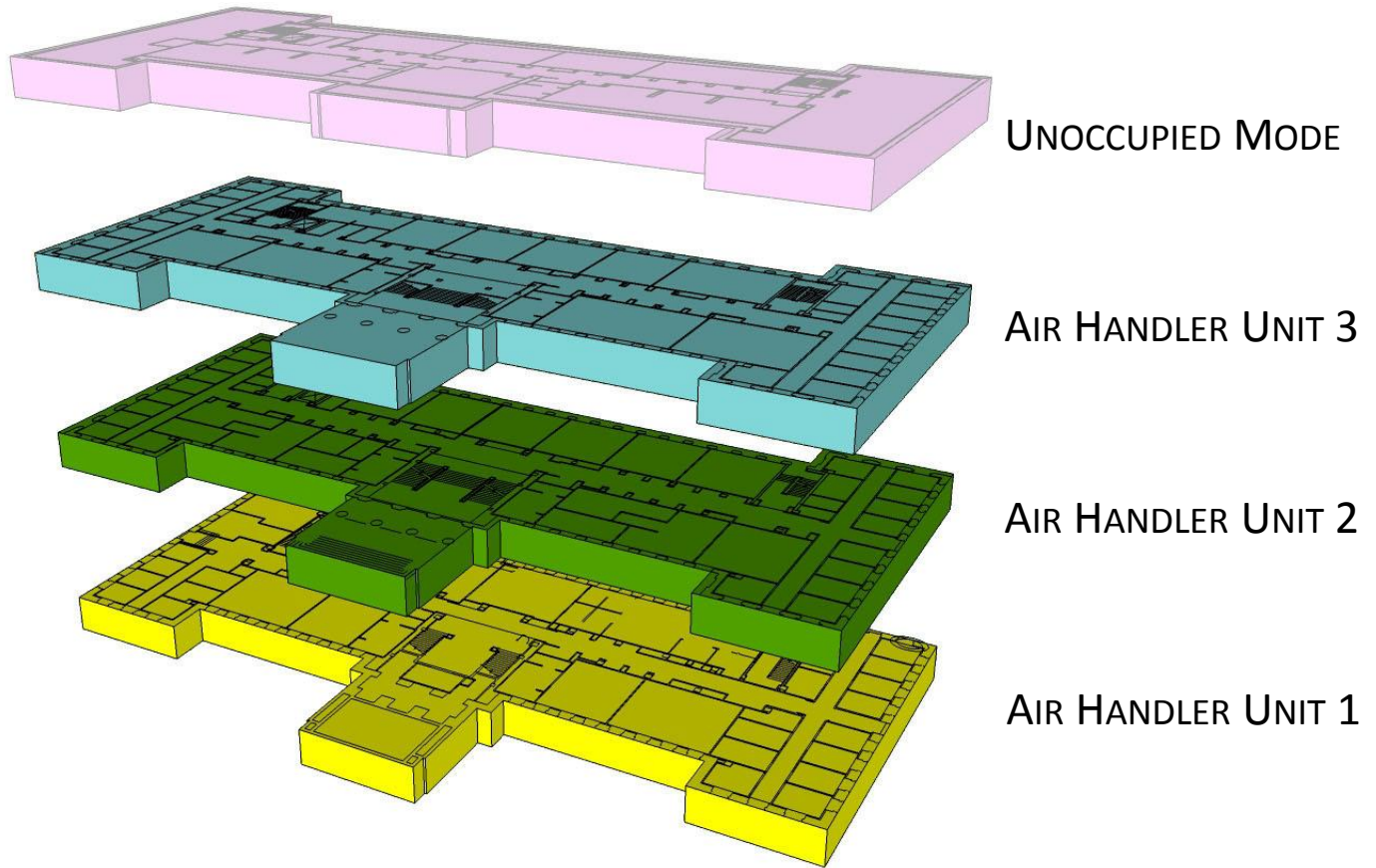
NO CLASSES WERE SCHEDULED ON THE  
FOURTH FLOOR AFTER 5:00.



SICELUFF HALL

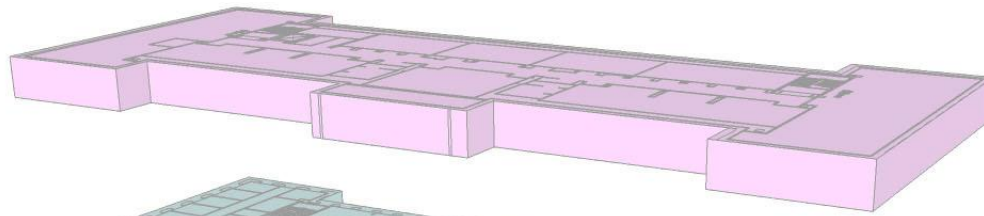


NO CLASSES WERE SCHEDULED ON THE  
THIRD FLOOR AFTER 5:00.

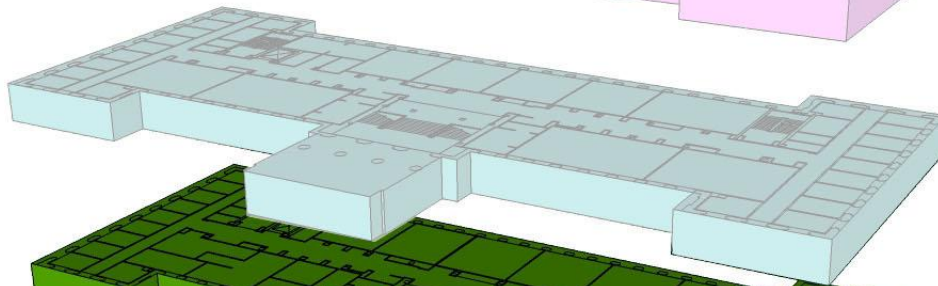


SICELUFF HALL

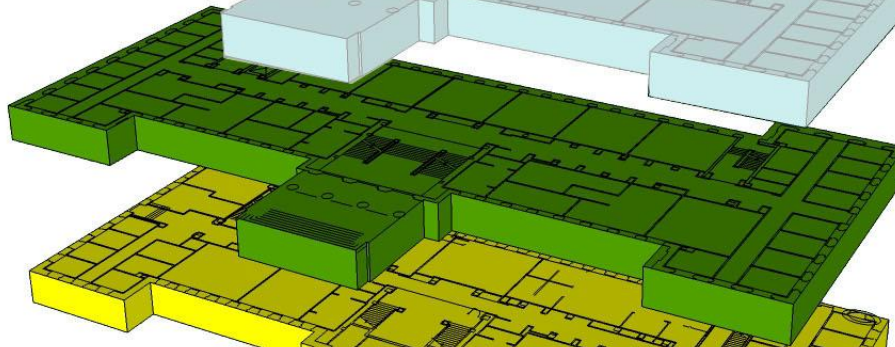




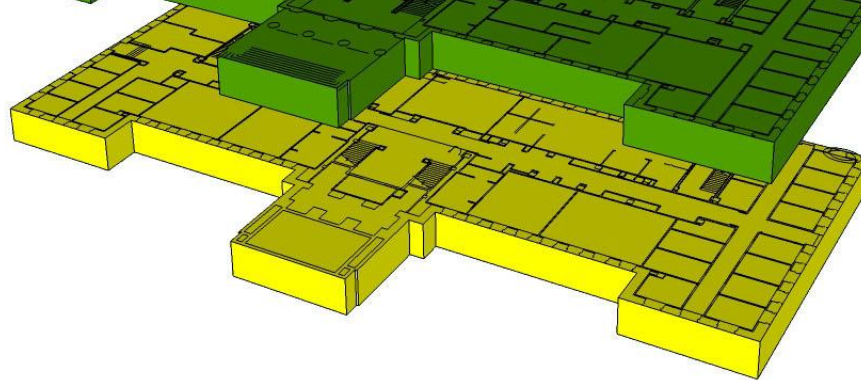
UNOCCUPIED MODE



UNOCCUPIED MODE



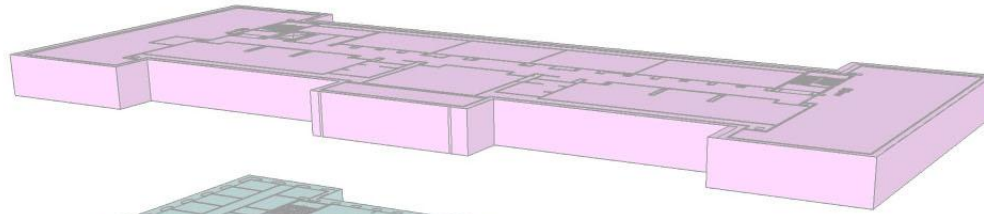
AIR HANDLER UNIT 2



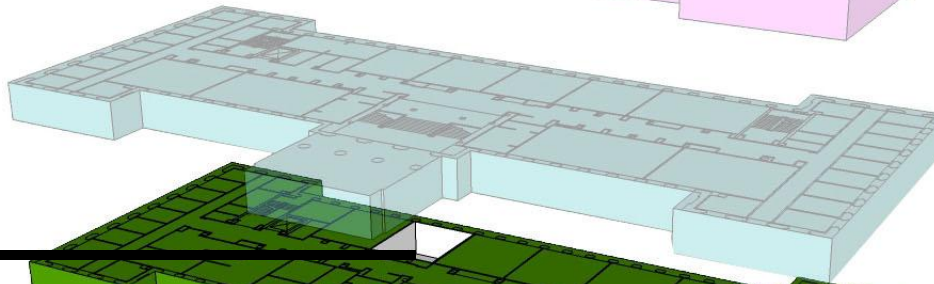
AIR HANDLER UNIT 1

# SICELUFF HALL

ONE CLASS WAS SCHEDULED ON THE  
SECOND FLOOR AFTER 5:00.  
BUT WAS SUCCESSFULLY CHANGED TO A  
BUILDING THAT WILL  
REMAIN IN AN  
OCCUPIED MODE

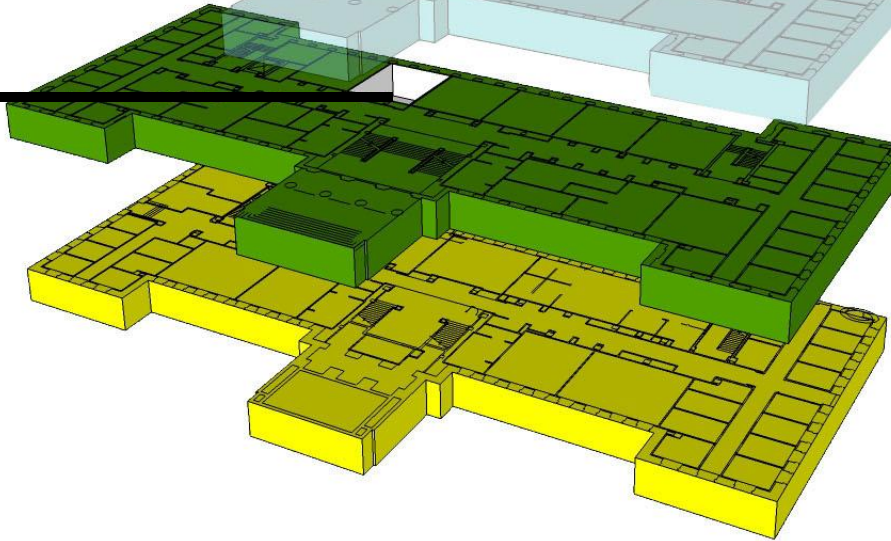


UNOCCUPIED MODE



UNOCCUPIED MODE

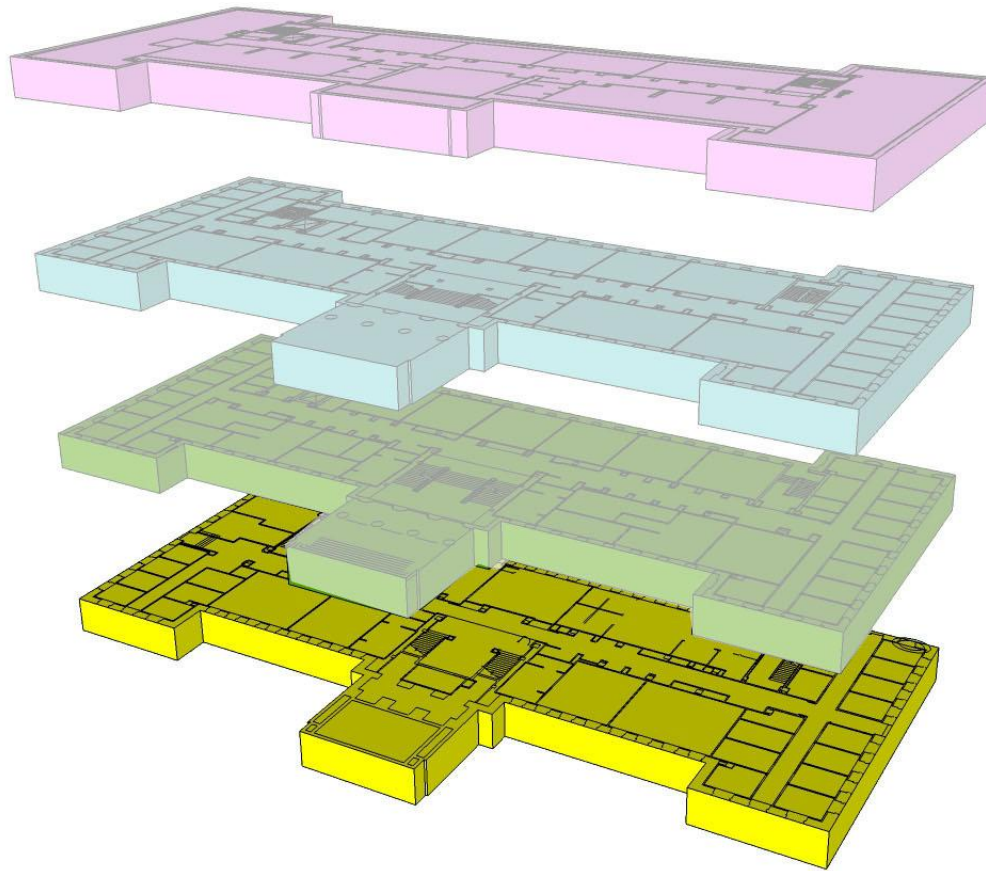
ROOM 218



AIR HANDLER UNIT 2

AIR HANDLER UNIT 1

SICELUFF HALL



UNOCCUPIED MODE

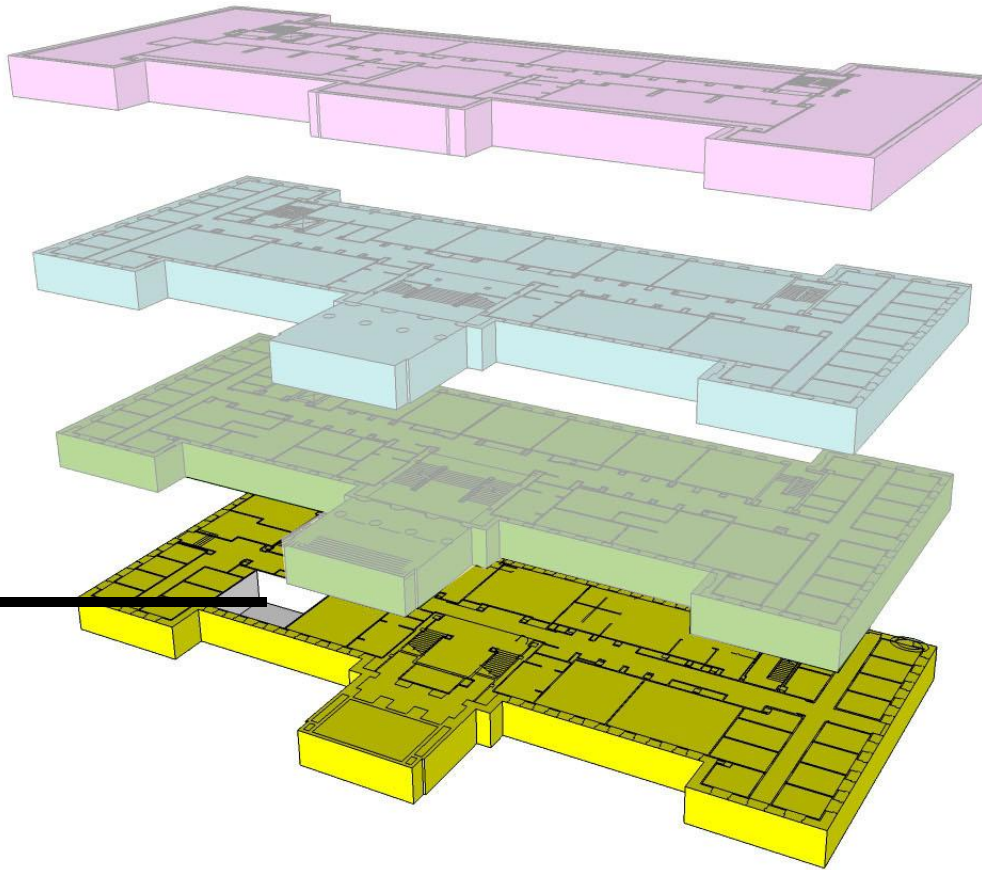
UNOCCUPIED MODE

UNOCCUPIED MODE

AIR HANDLER UNIT 1

# SICELUFF HALL

ONE CLASS WAS SCHEDULED ON THE  
FIRST FLOOR AFTER 5:00.  
BUT WAS SUCCESSFULLY CHANGED TO A  
BUILDING THAT WILL  
REMAIN IN AN  
OCCUPIED MODE

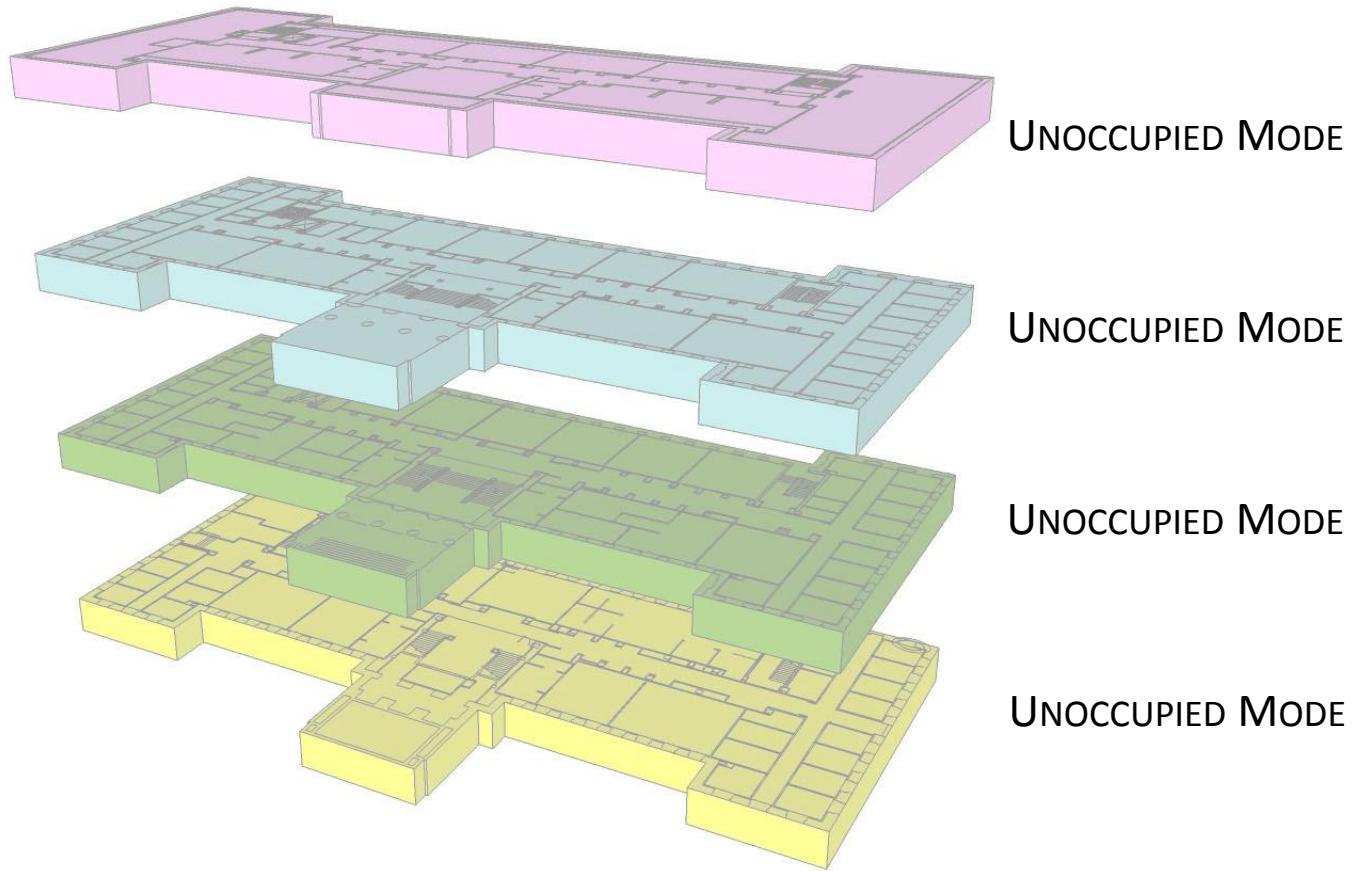


ROOM 117

AIR HANDLER UNIT 1

SICELUFF HALL





ALL OF SICELUFF HALL MAY MOVE TO AN UNOCCUPIED MODE AT 5:00

SAVINGS  
11% REDUCTION

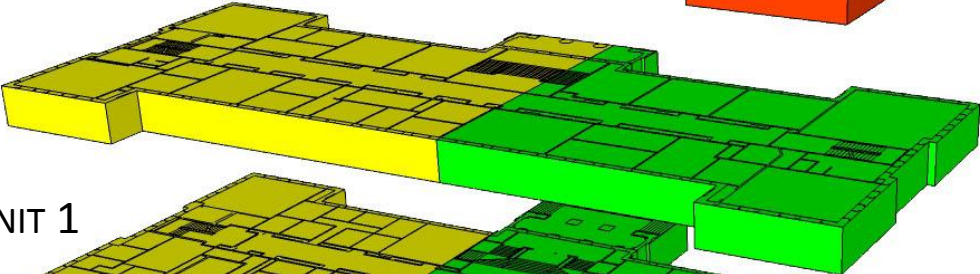
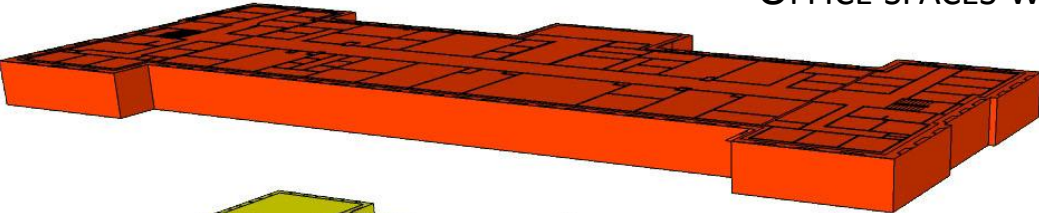
SUMMER SEMESTER – \$1,260

PER YEAR– \$6,464

SICELUFF HALL

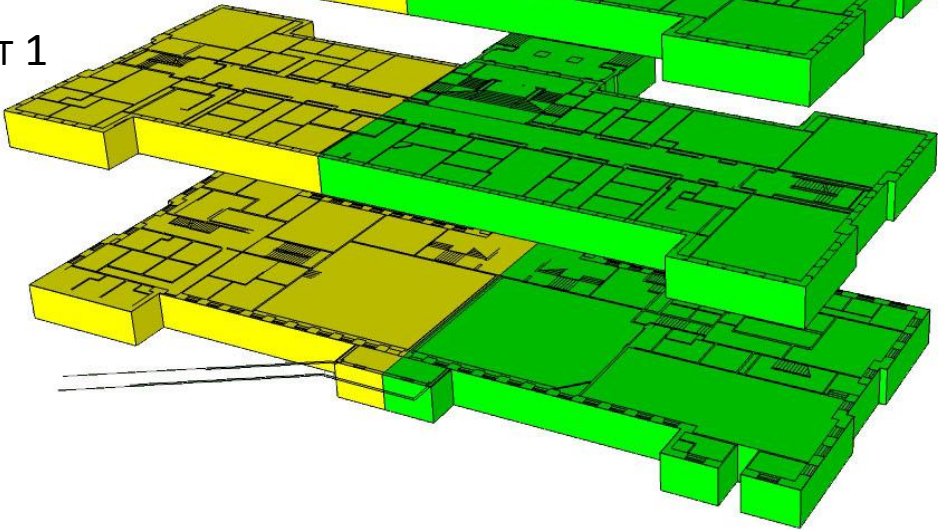


OFFICE SPACES WITH A 8 AM -5 PM SCHEDULE

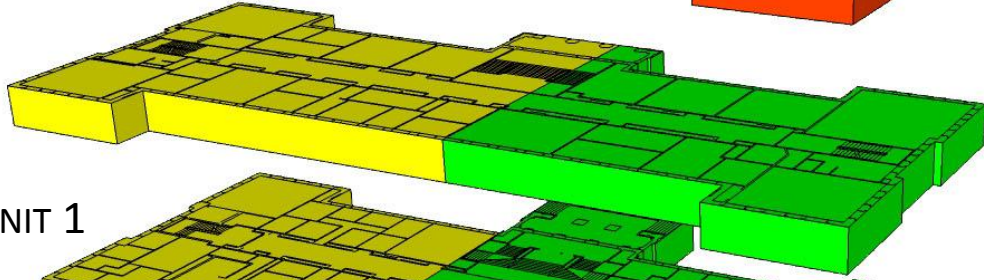
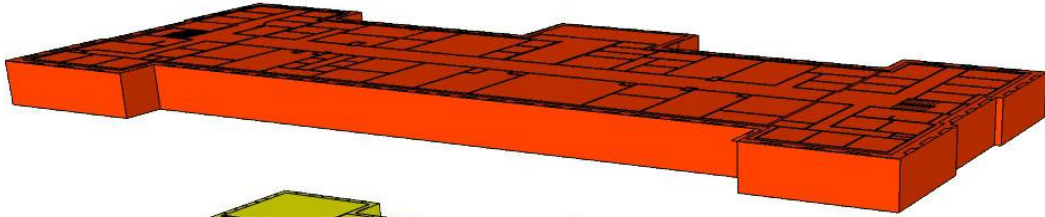


AIR HANDLER UNIT 1

AIR HANDLER UNIT 2

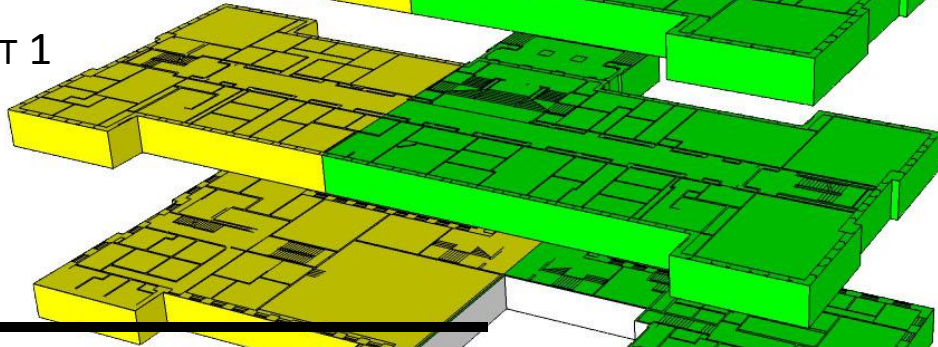


HILL HALL



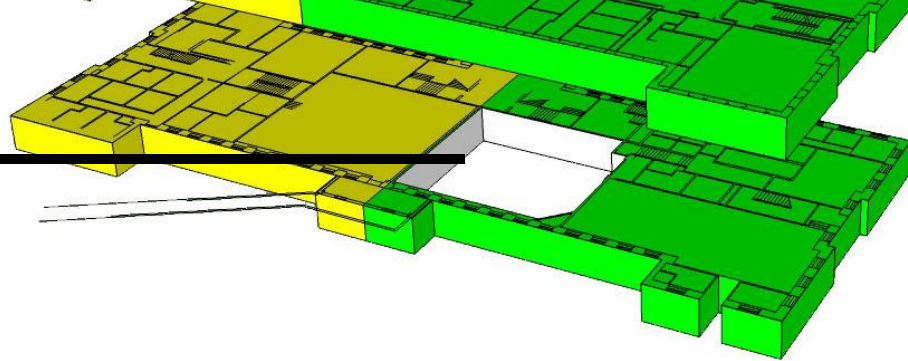
AIR HANDLER UNIT 1

AIR HANDLER UNIT 2

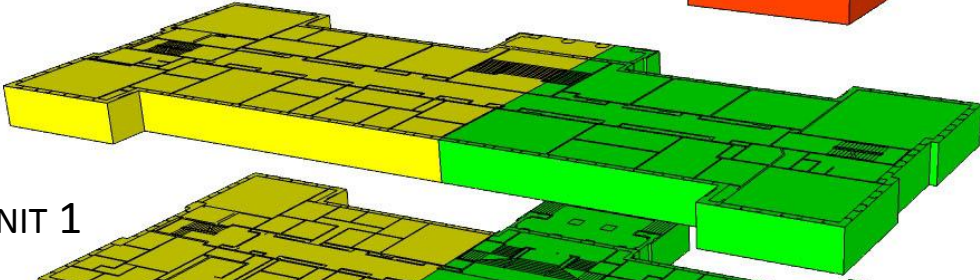
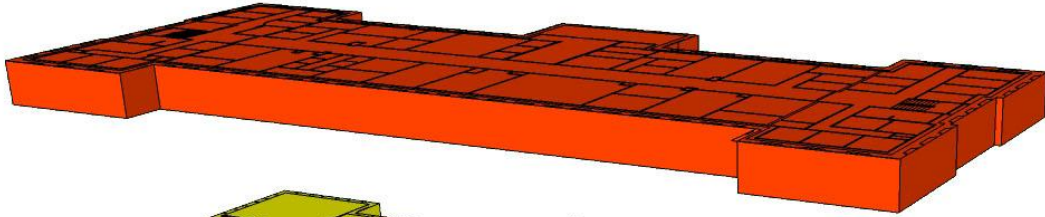


ROOM 001

ONE CLASS WAS SCHEDULED  
AFTER 5:00  
IN A SPACE CONTROLLED BY  
AIR HANDLER UNIT 2

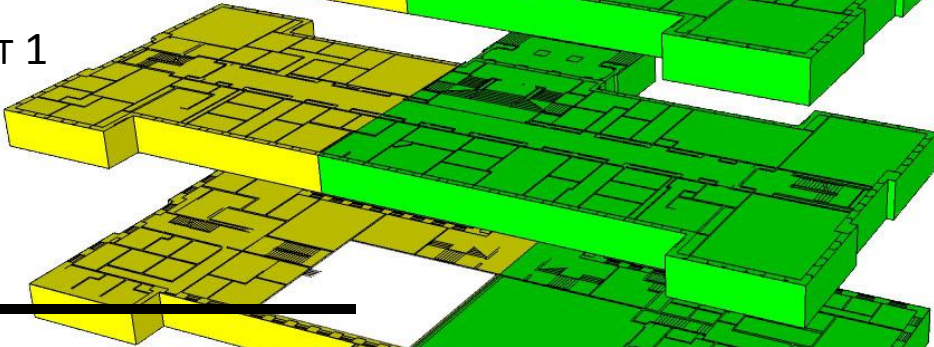


# HILL HALL



AIR HANDLER UNIT 1

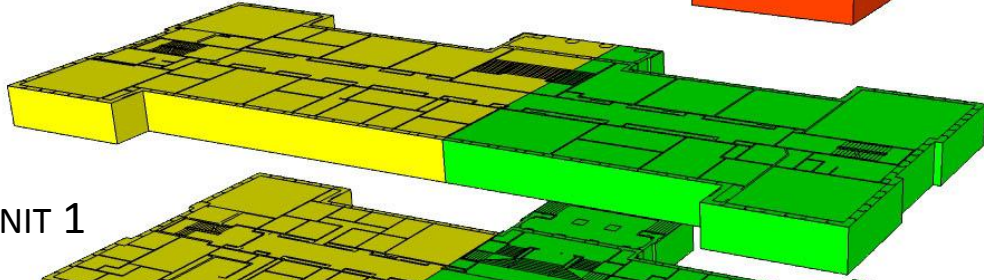
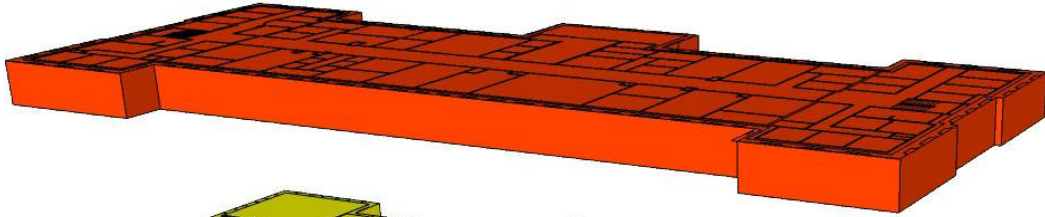
AIR HANDLER UNIT 2



ROOM 002

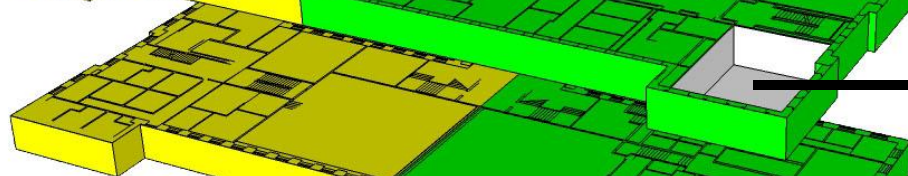
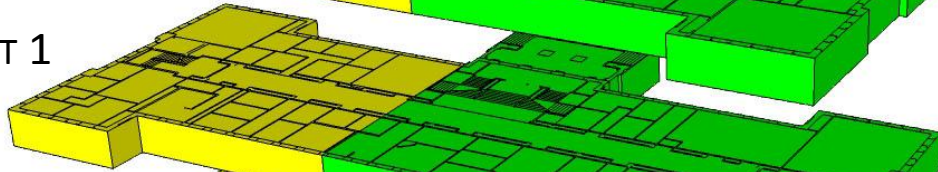
IT WAS SUCCESSFULLY MOVED  
TO A SPACE CONTROLLED BY  
AIR HANDLER UNIT 1

# HILL HALL



AIR HANDLER UNIT 1

AIR HANDLER UNIT 2

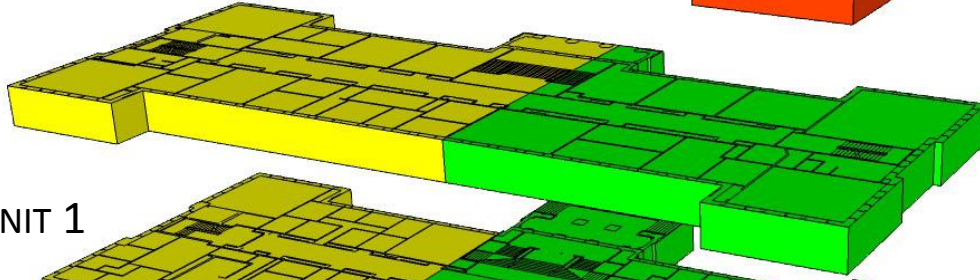
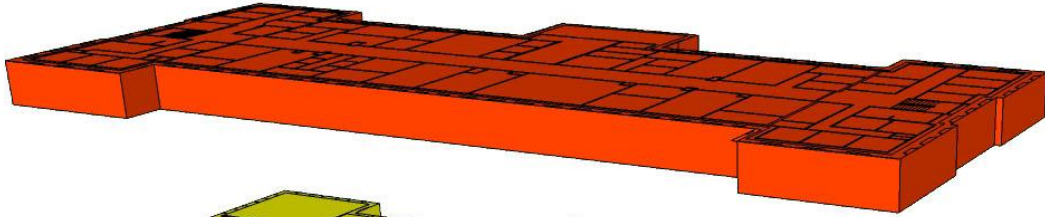


ROOM 204

ANOTHER CLASS WAS SCHEDULED  
AFTER 5:00  
IN A SPACE CONTROLLED BY  
AIR HANDLER UNIT 2

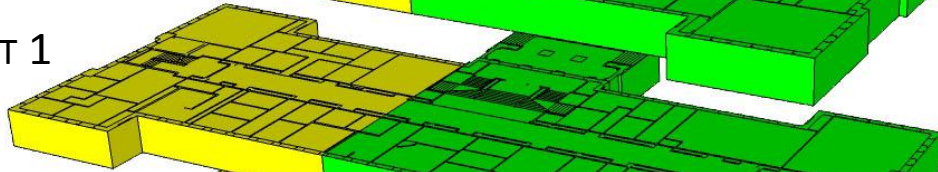
# HILL HALL





AIR HANDLER UNIT 1

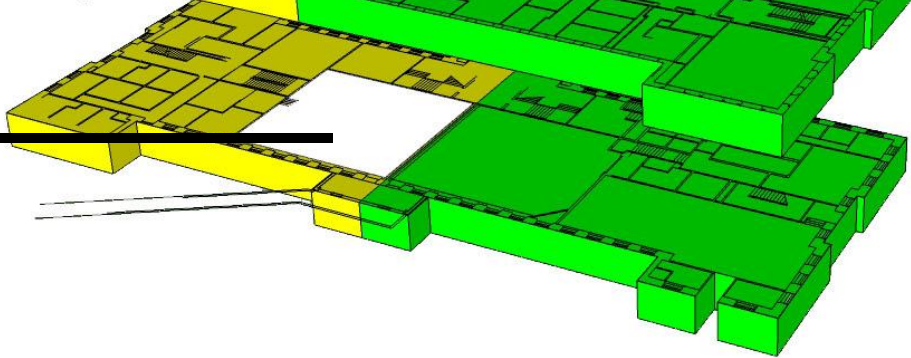
AIR HANDLER UNIT 2



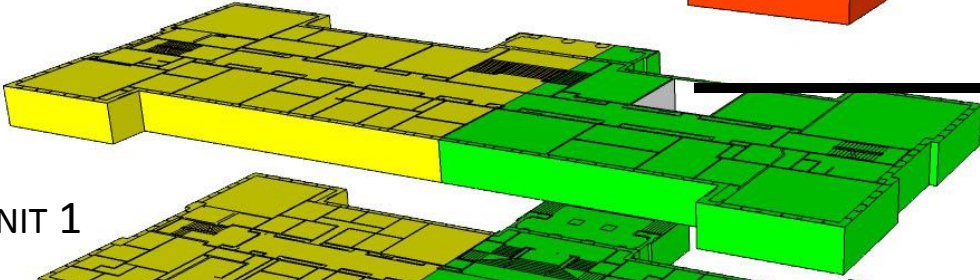
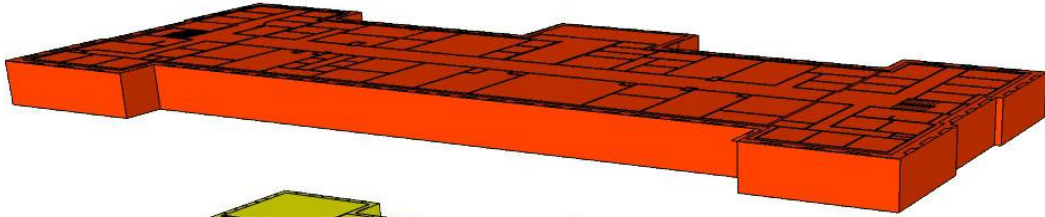
ROOM 002



IT WAS SUCCESSFULLY MOVED  
TO A SPACE CONTROLLED BY  
AIR HANDLER UNIT 1

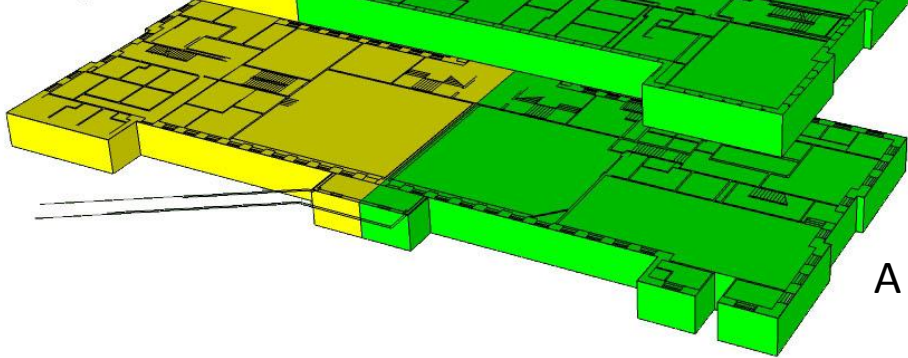
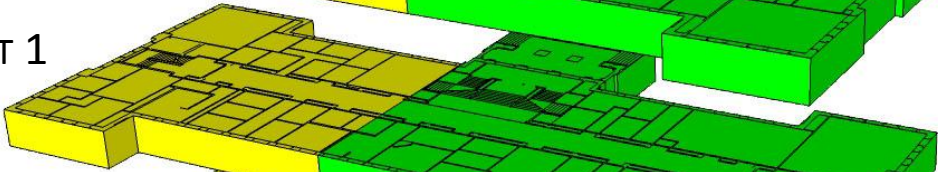


# HILL HALL



ROOM 312

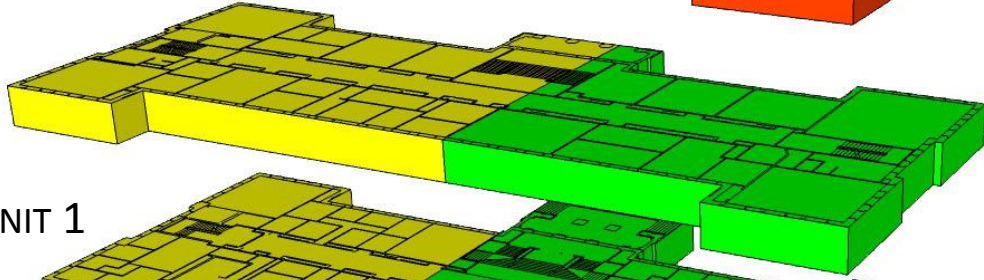
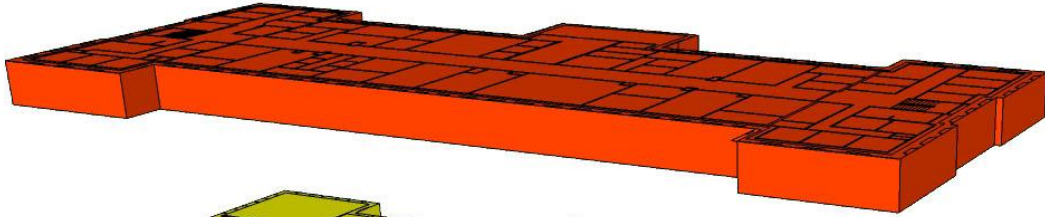
AIR HANDLER UNIT 1



A THIRD CLASS WAS SCHEDULED  
AFTER 5:00  
IN A SPACE CONTROLLED BY  
AIR HANDLER UNIT 2

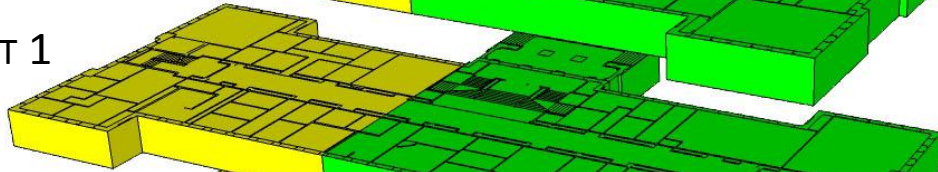
# HILL HALL



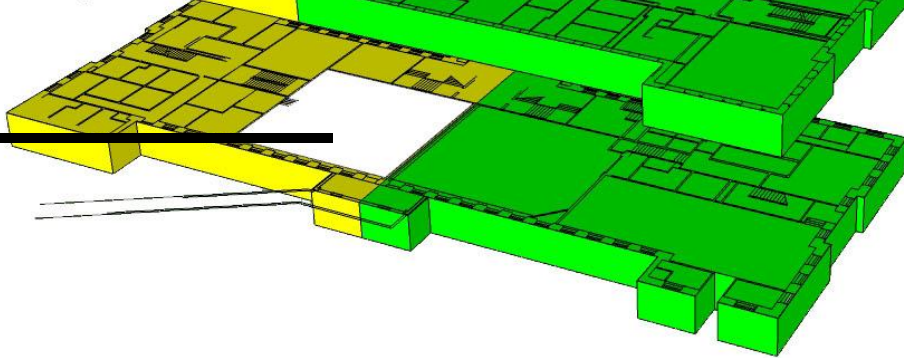


AIR HANDLER UNIT 1

AIR HANDLER UNIT 2

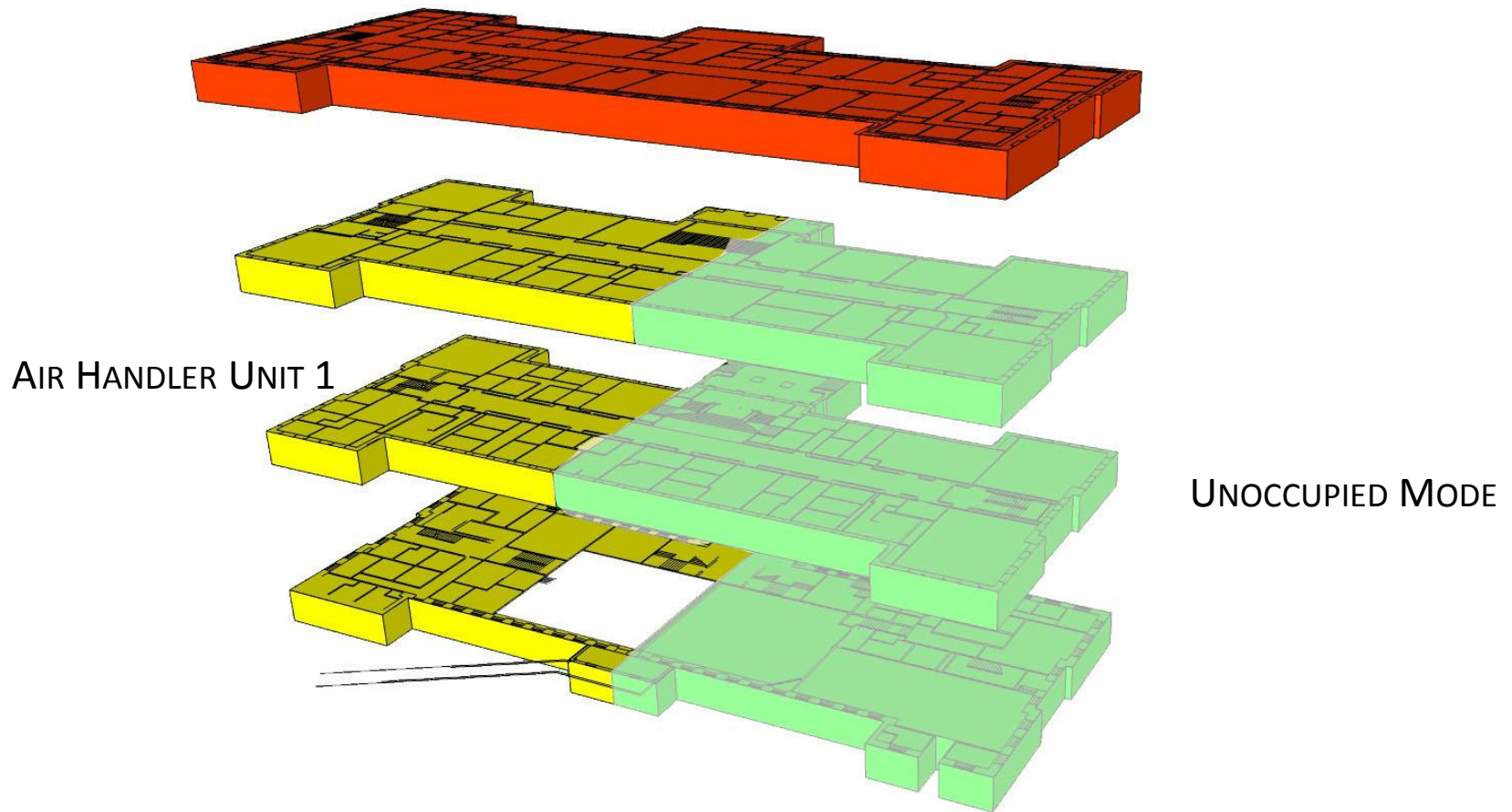


ROOM 002



IT WAS SUCCESSFULLY MOVED  
TO A SPACE CONTROLLED BY  
AIR HANDLER UNIT 1

# HILL HALL



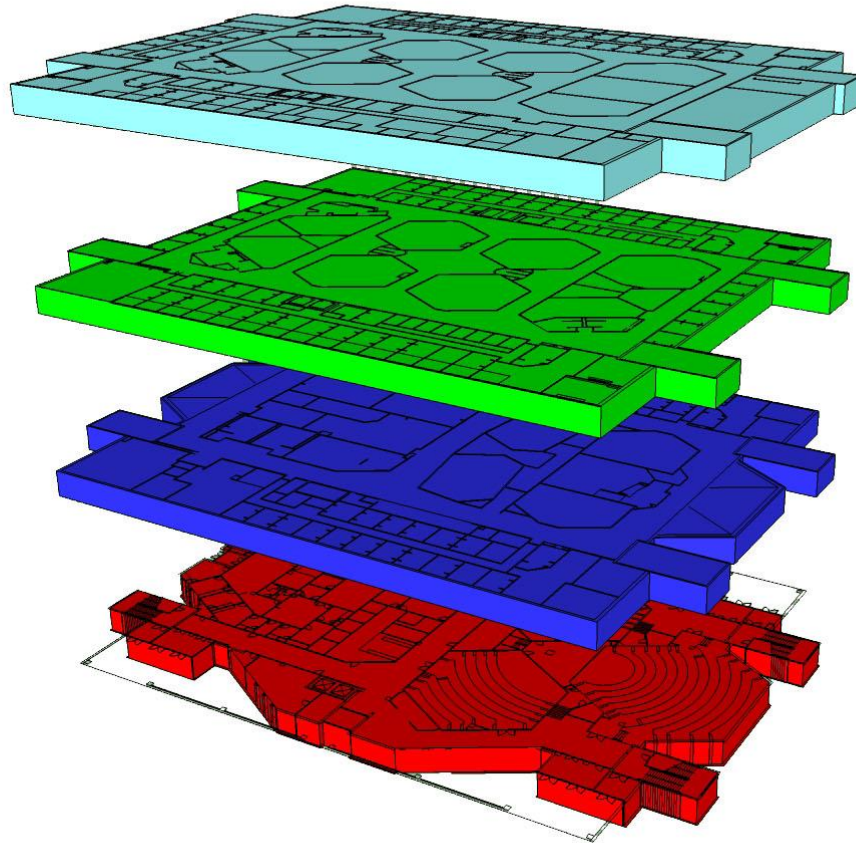
A PORTION OF HILL HALL MAY MOVE TO AN UNOCCUPIED MODE AT 5:00

SAVINGS  
21% REDUCTION

SUMMER SEMESTER – \$1,032

PER YEAR– \$11,611

HILL HALL



AIR HANDLER UNIT 4

AIR HANDLER UNIT 3

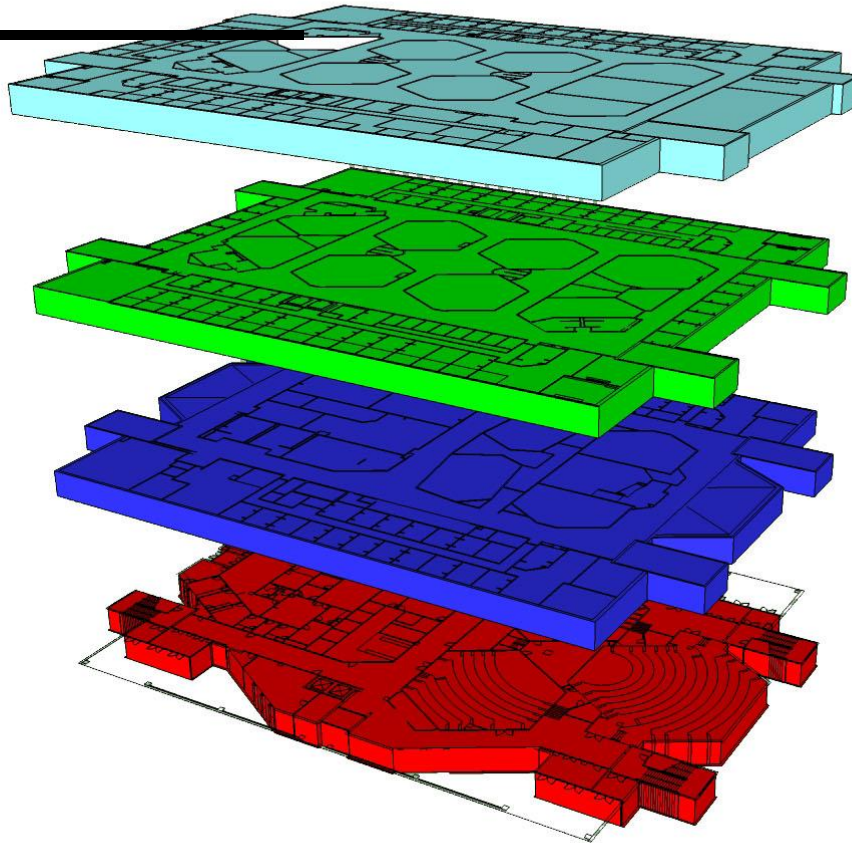
AIR HANDLER UNIT 2

AIR HANDLER UNIT 1

GLASS HALL

ONE CLASS WAS SCHEDULED ON THE  
FOURTH FLOOR AFTER 5:00.

ROOM 429



AIR HANDLER UNIT 4

AIR HANDLER UNIT 3

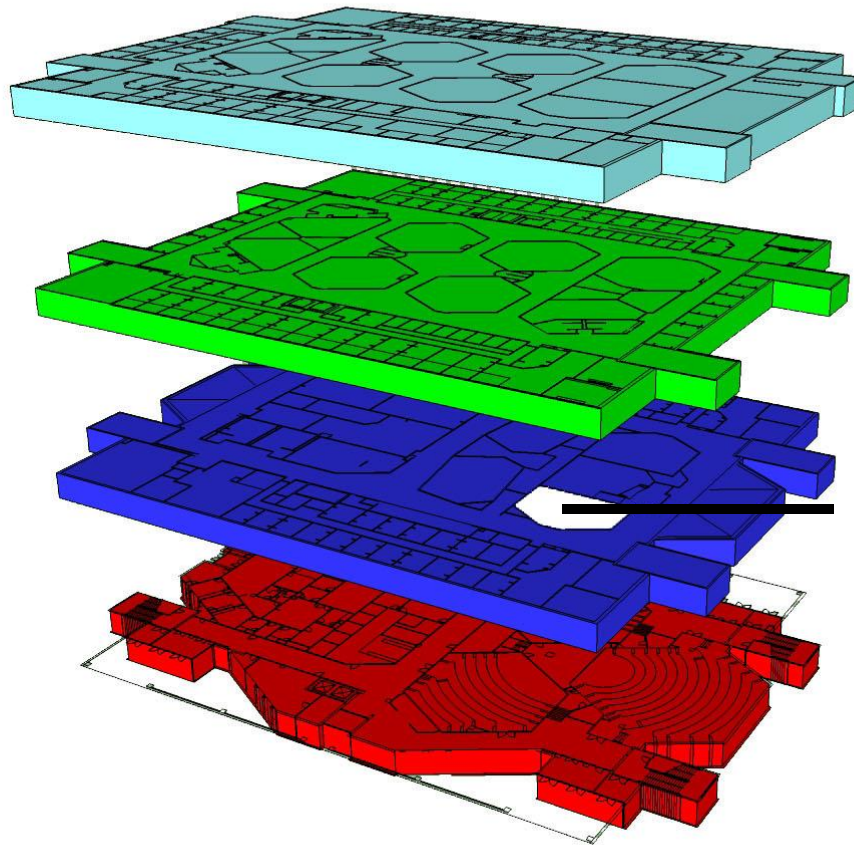
AIR HANDLER UNIT 2

AIR HANDLER UNIT 1

GLASS HALL



WAS SUCCESSFULLY CHANGED TO THE  
SECOND FLOOR



AIR HANDLER UNIT 4

AIR HANDLER UNIT 3

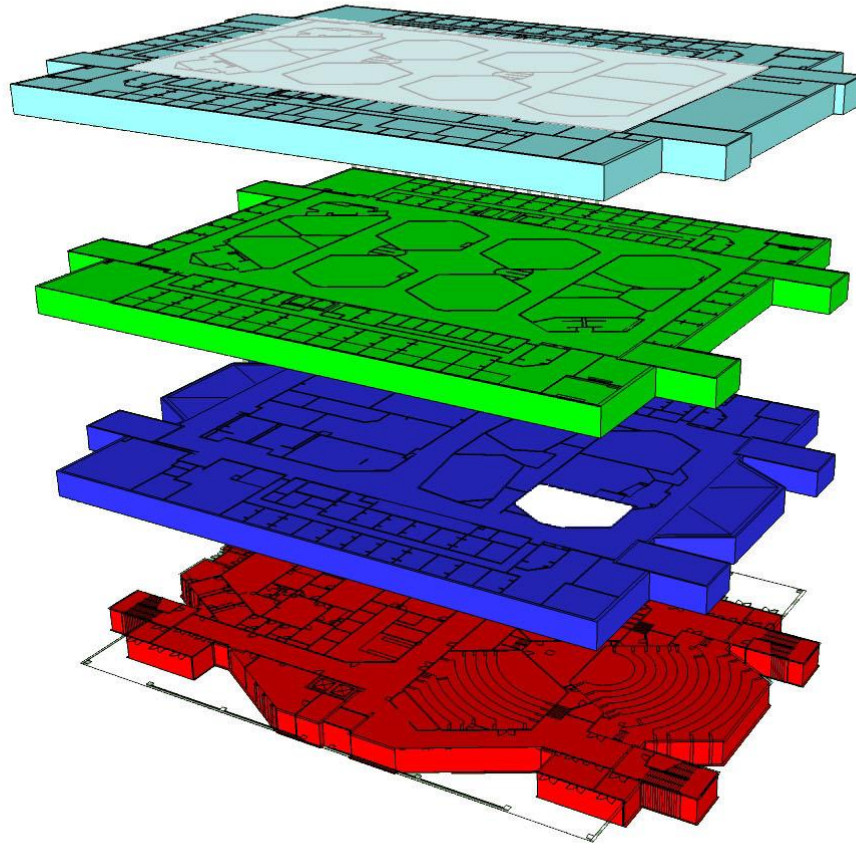
AIR HANDLER UNIT 2

ROOM 226

AIR HANDLER UNIT 1

GLASS HALL





UNOCCUPIED MODE

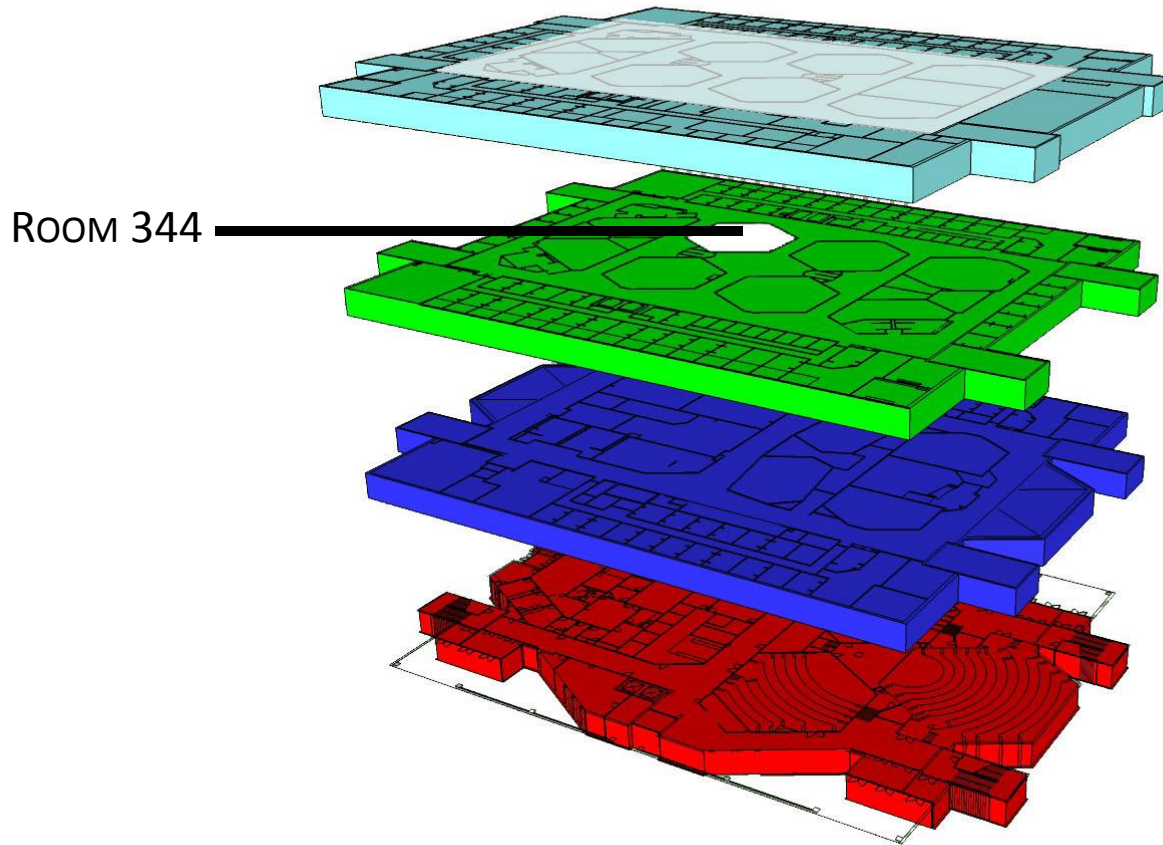
AIR HANDLER UNIT 3

AIR HANDLER UNIT 2

AIR HANDLER UNIT 1

GLASS HALL

ONE CLASS WAS SCHEDULED ON THE  
THIRD FLOOR AFTER 5:00.



UNOCCUPIED MODE

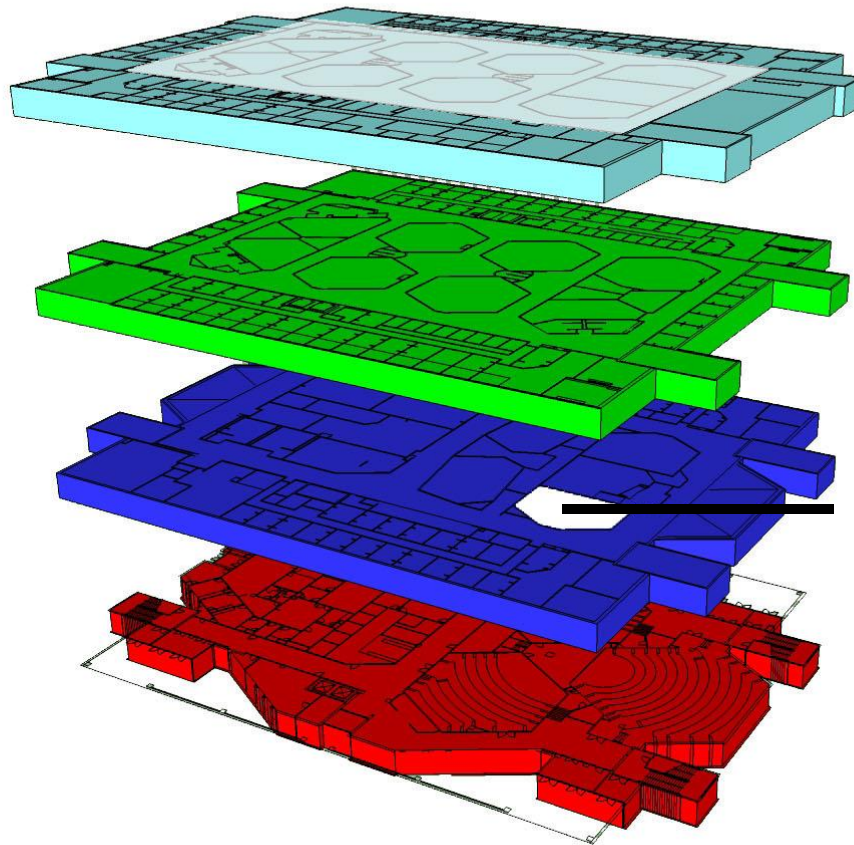
AIR HANDLER UNIT 3

AIR HANDLER UNIT 2

AIR HANDLER UNIT 1

GLASS HALL

WAS SUCCESSFULLY CHANGED TO THE  
SECOND FLOOR



UNOCCUPIED MODE

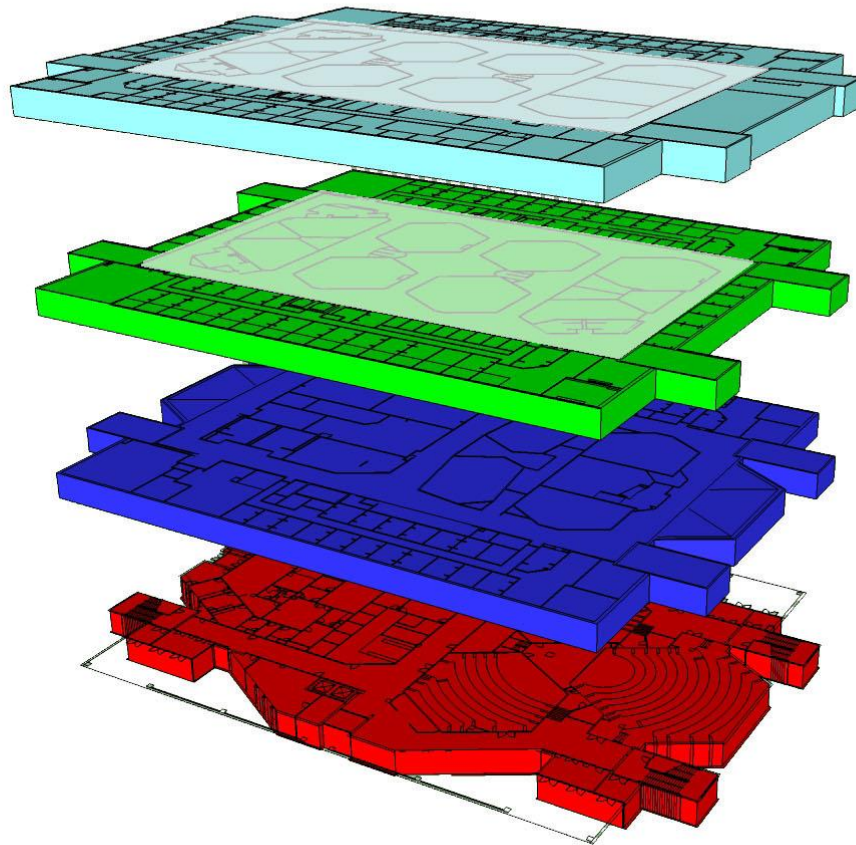
AIR HANDLER UNIT 3

AIR HANDLER UNIT 2

ROOM 226

AIR HANDLER UNIT 1

GLASS HALL



UNOCCUPIED MODE

UNOCCUPIED MODE

AIR HANDLER UNIT 2

AIR HANDLER UNIT 1

THE THIRD AND FOURTH FLOORS OF GLASS HALL MAY MOVE TO AN  
UNOCCUPIED MODE AT 5:00

SAVINGS  
22% REDUCTION

SUMMER SEMESTER – \$3,552

PER YEAR– \$36,480

GLASS HALL



# FOUR SELECTED BUILDINGS

---

AVERAGE 15% REDUCTION

TOTAL POTENTIAL SAVINGS - SUMMER SEMESTER – \$6,580

TOTAL POTENTIAL SAVINGS - PER YEAR – \$59,186

