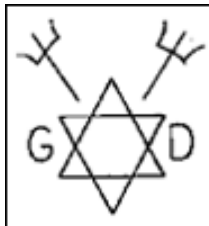


# Signs Indicating Gang Affiliation

**Clothes:** Does the child have many clothes of the same color or certain color combinations, such as black and blue or blue and gold?



Black Gangster Disciples

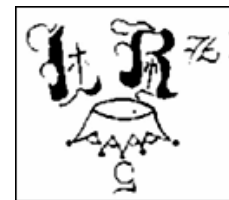


Gangster Disciples

**Jewelry:** Does the child wear a lot of gold jewelry similar to that worn by gangs? How did the child the money to purchase it?

**Money:** Does the child have large, unaccounted for, amounts of money?

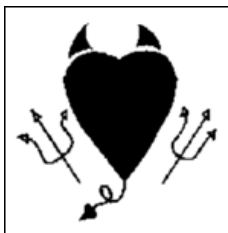
**Pagers and portable phones:** Does the child use it excessively or privately in places and at times when normal social calls would not occur?



La Raza

**Gang Symbols:** Does the child have gang symbols on school books, notebooks, clothes, and/or tattoos?

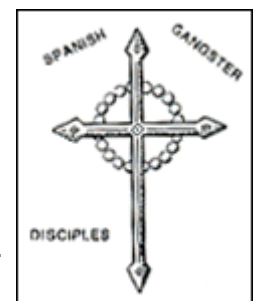
**Language:** Does the child use special language, slang, or gang jargon to communicate?



Latin Disciples

**Attitude:** Does the child exhibit an unfamiliar, an inappropriate, and a negative attitude about things at home, school, and elsewhere?

**School performance and attendance:** Is the child's school performance sliding for no obvious reason? Has the child been repeatedly truant? Does the child violate curfew laws?



Spanish Gangster Disciples

**Friends:** Does the child "hang out" with people who all wear the same gang-related colors, speak in gang jargon, use gang signs, listen to the same distressful or violent music, carry weapons, get into trouble with the law, and engage in other irresponsible behavior.



Latin Eagles

Wiener, V. (1999). *Winning the war against youth gangs: A guide for teens, families, and communities*. Westport, CT: Greenwood Press