

Monthly Memo



Please send your School-related announcements to Megan Clemensen, editor, by mid-month for inclusion in the Monthly Memo:
MeganClemensen@missouristate.edu



Social Work forecast for 2009:

Welcome back students and faculty!

I'd like to let you know what a smart choice you've made in choosing social work as a profession—especially in these difficult economic times.

According to the Bureau of Labor Statistics, U.S. Department of Labor, *Occupational Outlook Handbook*:

Employment of social workers is expected to increase by 22 percent during the 2006-16 decade, which is [much faster than the average](#) for all occupations. The growing elderly population and the aging baby boom generation will create greater demand for health and social services, resulting in rapid job growth among gerontology social workers. Those working in rural areas also have good job prospects, particularly if they obtain a graduate MSW degree and licensure.

Employment of child, family and school social workers is expected to grow by 19 percent, which is [faster than the average](#) for all occupations.

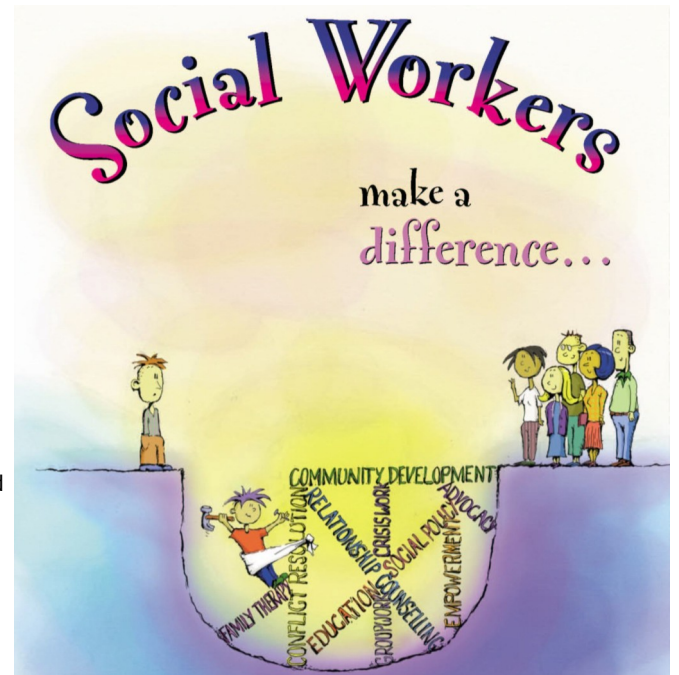
Mental health and substance abuse social workers will grow by 30 percent, which is [much faster than the average](#), over the 2006-16 decade. In particular, social workers specializing in substance abuse will experience strong demand.

Growth of medical and public health social workers is expected to be 24 percent, which is [much faster than the average](#) for all occupations, particularly in home health care services.

SO, IT'S TRUE, ALL OF YOUR EDUCATIONAL PLANNING AND HARD WORK WILL PAY OFF!

Wishing you a productive semester!

Dr. Susan Dollar, Director



Citation: Bureau of Labor Statistics, U.S. Department of Labor, *Occupational Outlook Handbook, 2008-09 Edition*, Social Workers, on the Internet at <http://www.bls.gov/oco/ocos060.htm> (visited December 19, 2008).