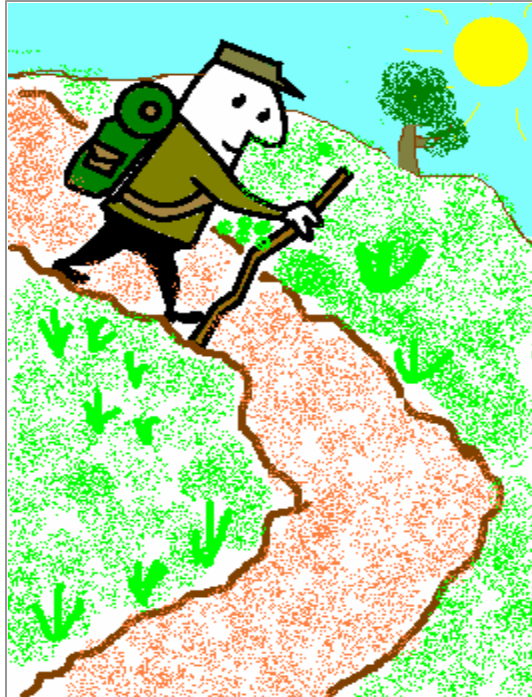


Hiking In The Ozarks



Southwest Missouri State University
Plaster Student Union 135
(417) 836-5904
www.smsu.edu/recreation

Leave No Trace

- Plan And Prepare
 - Know regulations and prepare for extreme weather.
- Travel/Camp on Durable Surfaces
 - Durable Surface: established trails and campsites, rock, gravel, dry grasses or snow.
- Dispose of Waste Properly
 - Pack In, Pack Out (includes TP, hygiene products).
- Leave What You Find
 - Avoid transplanting or introducing non-native species. Leave fossils and artifacts.
- Minimize Campfire Impact
 - Lightweight cooking stove and candle lantern cause little impact.
- Respect Wildlife
 - Never feed animals and control pets at all times.
- Be considerate of Others
 - Take breaks/camp off trail and yield to others on the trail.

ALL WATER FROM NATURAL SOURCES
MUST BE PURIFIED (BOILED,
CHEMICALLY TREATED, OR FILTERED)

.....

Missouri

1. Devil's Backbone Wilderness

Location: Willow Springs Ranger District, Mark Twain Nat'l Forest (417) 469-3155
Distance: 2.5 hrs from Springfield
Trail Length: 11 miles*

Ideal for day hikes, overnight backpacking or extended trips. Three trailheads (Raccoon Hollow, McGarr Ridge, and Collins Ridge) permit overnight parking. No permit required for camping, although registration at the trailheads is requested. North Fork Recreation area (or Hammond Camp) on the northern edge of the wilderness provides camping, picnic areas and a designated canoe launch into the North Fork River.

2. Ridge Runner Trail

Location: Willow Springs Ranger District, Mark Twain Nat'l Forest (417) 469-3155
Distance: 2.5 hours from Springfield
Trail Length: 12 miles*

The trail is open to horseback, biking, and hiking, although flash flooding can be a problem during certain times of the year. Spring and fall are the best times to use the trail, which is vaguely marked along sections. The landscape varies from gently rolling to very steep terrain with rock outcrops and bluffs. Overnight parking is available at Noblett Recreation Area, Horton trailhead, Blue Hole Trailhead/ Picnic, and North Fork Recreation Area/Campground.

*The Devils Backbone Trails may be combined with the Ridge Runner Trail for extended trips.

3. Piney Creek Wilderness

Location: Cassville Ranger Districts, Mark Twain Nat'l Forest (417) 847-2144

Distance: 2 hours from Springfield

Trail Length: 13.1 miles

Ideal for day hikes and overnight backpacking with overnight parking available at the northern Pineview Tower trailhead and the southern trailhead. Large well-used campsite approx. 2 hours hike from the northern trailhead taking the western trail. Scenic overlook along bluffs near southern trailhead. Few water sources unless at Table Rock Lake, all needing purification. Limit group size to 10.

4. Hercules Glades Wilderness

Location: Ava Ranger District, Mark Twain Nat'l Forest (417) 683-4428
Distance: 2 hours from Springfield
Trail Length: 42 miles

Two trailheads, Hercules Tower and Coy Bald Trailheads, contain campsites as well as bathroom facilities. Most of the trails follow Long Creek or the surrounding mountains. Some trails are rugged and may be challenging for the unprepared. Water is usually available at Long Creek in the winter and spring. Also overnight parking is available at all three trailheads.

5. Irish Wilderness

Location: Doniphan Ranger District, Mark Twain Nat'l Forest (573) 325-4233
Distance: 3 hours from Springfield
Trail Length: 19.5 miles

Whites Creek Trail has 3 trailheads with overnight parking available at camp Five Pond TH and at Brawley Pond TH. It is recommended that you start at the Camp Five Pond TH if you are hiking the entire loop. Water is available at the many springs, Whites Creek, or the Eleven Point River. For a shorter hike you can start at Brawley Pond and hike 4.1 miles to Bliss Spring. There are no specific trail camps established, so use best judgment in selecting your site. White's Creek Cave is open during the summer months.

6. Paddy Creek Wilderness

Location: Houston-Rolla Ranger District, Mark Twain Nat'l Forest (417) 967-4194
Distance: 1.5 - 2 hours from Springfield
Trail Length: 17 miles

Big Paddy creek and Little Paddy creek are both within the area and both maintain a water flow throughout the year. Overnight parking is available at Roby Lake Recreation Area near the Big Piney TH, at the Paddy Creek Campground (the mid-point along the trail as it crosses Paddy Creek) and at the Big Piney Trail Camp. The Big Piney Trail encircles the Wilderness with camping and picnicking facilities located within. Water is available along the trail as it crosses the various creeks and springs, especially along the northeastern sections of the trail.

7. Ozark Trail

Location: Missouri-Arkansas
Distance: Varies
Trail Length: 617.5 miles (some yet to be completed)

The Ozark Trail will one day stretch from St. Louis, MO to Lake Fort Smith, AR. Sections of the trail are still under construction. In Missouri alone, there are over 300 miles of trail completed. The map to this direction shows the Missouri sections of the trail. For more detailed information ask an Outdoor Adventure associate for information on specific sections or you may call the Ozark Trail Coordinator at 1-800-334-6946. You may also obtain information online at: <http://slluez.home.mindspring.com/transozarktrail.html>.

8. Berryman Trail

Location: Doniphan Ranger District, Mark Twain Nat'l Forest (573) 438-5427
Distance: 3 hours from Springfield

Trail Length: 24 miles

Overnight parking and camping is available at the Berryman and Brazil Creek trailheads. Water is available at three locations: an artesian well at a trailcamp approx. 5.5 miles from the Berryman TH heading east, Harman Spring and Brazil Creek. During high water, the trail can become impassable, especially at the Brazil Creek campground. This trail is also used as a horse trail and mountain bikers are increasingly using the trail as well.

MISSOURI'S OZARK TRAIL



9. Buffalo River Trail

Location: Northern Arkansas
Distance: 2.5 hours from Springfield
Trail Length: 50.5 miles (one way)

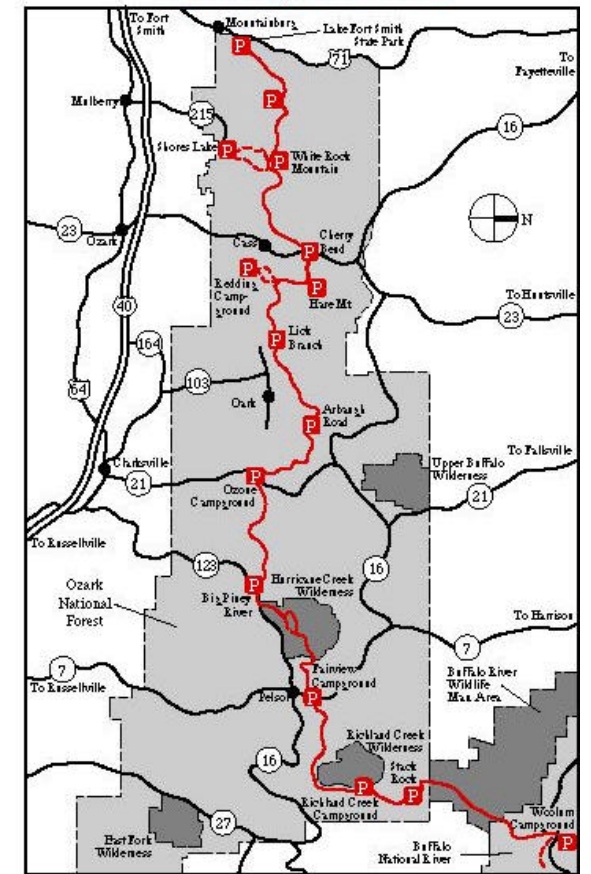
There are currently two completed sections of the Buffalo River Trail; a 36 mile section between Boxley and Pruitt and a 15 miles section from Wollum to U.S. highway 65. The trail is considered to be rugged due to the topography of the river. It winds through the river valley then climbs to limestone palisades. Wildlife is often seen along this trail, including a herd of Elk, which usually can be seen early in the morning in the meadow near the Ponca TH. Water is available along the trail at various locations and in the nearby Buffalo River. For more information ask at Outdoor Adventures or call the Park Superintendent at Buffalo National River (870) 741-5443.

10. Ozark Highlands Trail

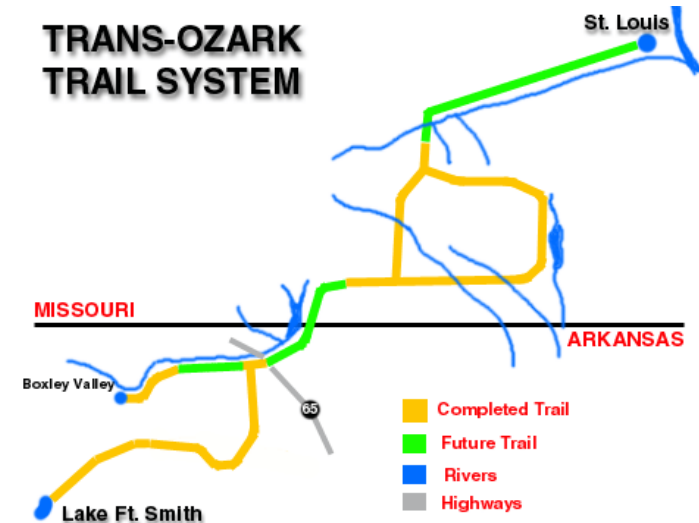
Location: Northern Arkansas
Distance: 3 hours from Springfield
Trail Length: 180 miles, including spurs

This trail has been rated as one of the most scenic trails in America. It begins at Lake Fort Smith State Park and extends to the Buffalo River Trail. Camping is allowed after the first 6 miles of the trail. Water availability and overnight parking will be dependant upon the section you choose to hike. Additional information can be obtained at Outdoor Adventures, by calling the Ozark National Forest at (501) 968-2354 or online at <http://wilderness.arkansasusa.com/OHTA.html>.

Ozark Highlands Trail



TRANS-OZARK TRAIL SYSTEM



For more information on Leave No Trace Ethics or anything listed in this brochure ask an Outdoor Adventures associate.
