



General Information

Highlights

- ▶ On August 28, 2005, the University became known as Missouri State University. This is the University's fifth name after being founded as the Fourth District Normal School in 1905.
- ▶ Missouri State University is one of the 13 four-year, public supported institutions of higher education in Missouri.
- ▶ In addition to the main campus in Springfield, there is a two-year branch campus in West Plains and a research campus in Mountain Grove.
- ▶ The University was given a regional mission by legislative act in 1919. That mission was expanded in the spring of 1995. The name of the University's governing board was also changed to the Board of Governors, and its composition reflects the change in mission. The most recent statement of mission, approved by the Board of Governors in July 2000, includes a special statewide emphasis on public affairs, as well as future development along five themes: professional education, health, business and economic development, creative arts, and science and the environment.
- ▶ The Springfield and West Plains campuses are separately accredited by the Higher Learning Commission – North Central Association of Colleges and Secondary Schools.

Missouri State University System

Springfield



West Plains



Mountain Grove



Extended Campus



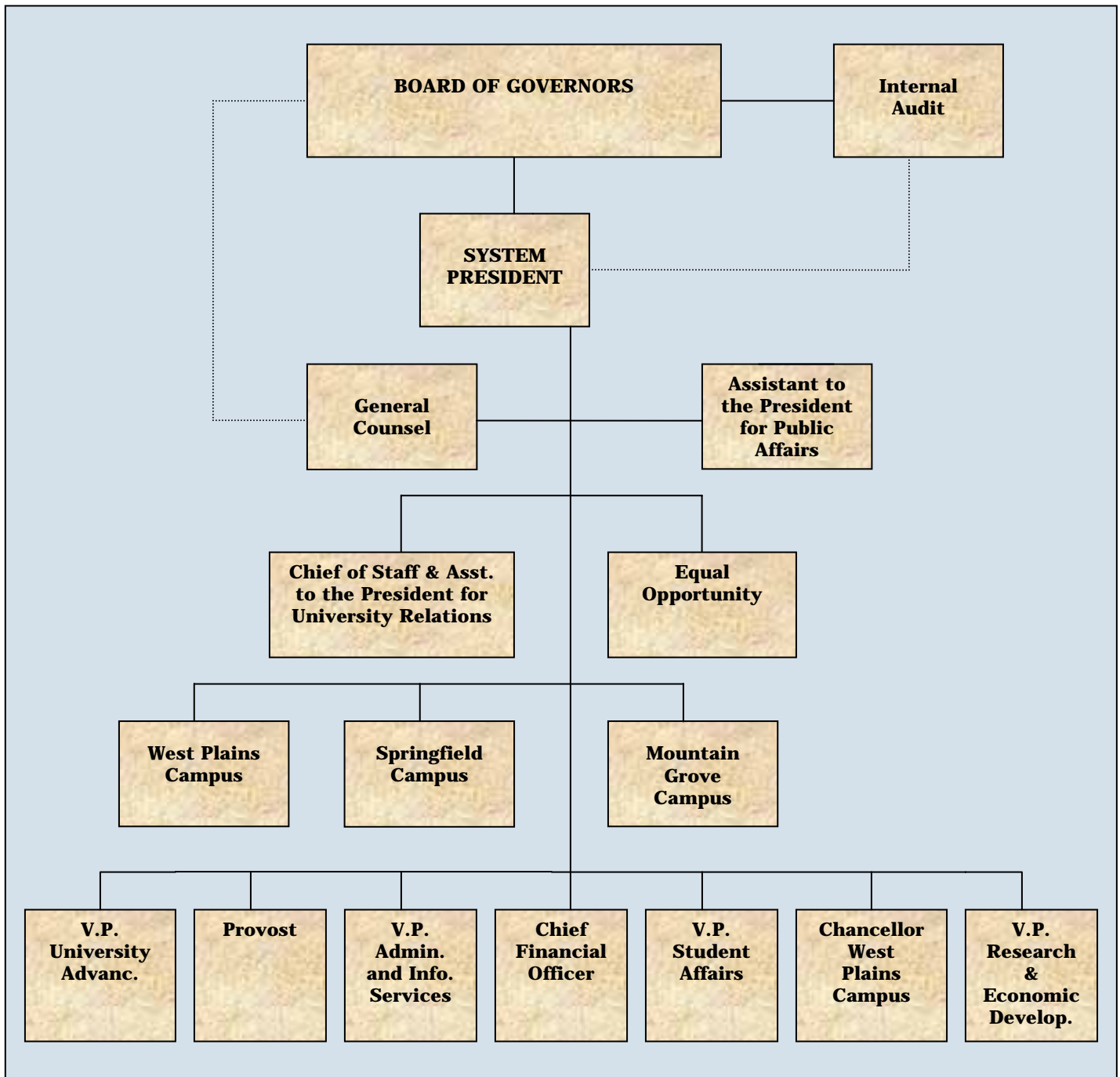
System Overview

Missouri State University is a comprehensive statewide university system with a mission in public affairs operating under a single Board of Governors.

The “selective admissions” Springfield campus offers primarily baccalaureate and master’s degrees with one specialist degree and one doctorate degree. The doctorate degree is offered in audiology. In addition, the University has a cooperative doctorate in education leadership with the University of Missouri-Columbia. The West Plains campus is separately accredited and is an “open admissions” campus offering two-year degree programs. Baccalaureate and master’s degrees are also available at that campus through Missouri State University-Springfield. A focused research program is in place at Mountain Grove. The Missouri State University virtual campus coordinates telecommunication-based delivery of distance education among and by the three campuses.

System administration and coordination is the responsibility of the Missouri State University Administrative Council, which provides effective administration at minimal cost. No positions have been or will be added for System purposes. Administrative Council develops business and support systems necessary to ensure that the campuses operate cooperatively, efficiently, economically and without duplication.

University System Organization Chart



The current organizational structure of the Missouri State University System is portrayed in the diagram above. The system is administered by a System President who reports to the Board of Governors. For the Springfield campus, the division of Academic Affairs is headed by the Provost; the division of Financial Services is headed by the Chief Financial Officer; and the divisions of Administrative and Information Services, Research and Economic Development, Student Affairs and University Advancement are each headed by a vice president. Other administrative positions which report directly to the System President are two Assistants to the President, the General Counsel and the Chancellor of the West Plains campus.

History and Mission

University Heritage

Missouri State University was founded in Springfield in 1905 as the Fourth District Normal School. During its early years, the school's primary purpose was the preparation of teachers for the public school systems in southwest Missouri. The school's first name change came in 1919, when it became the Southwest Missouri State Teachers College, reflecting the institution's regional mission. By the mid-1940s, it had expanded beyond teacher education to include instructional programs in the liberal arts and the sciences; as a consequence, in 1945, the Missouri Legislature authorized an official name change to Southwest Missouri State College. In the ensuing decades, with the implementation of more programs at the undergraduate level and the development of a graduate education program, the College became an educationally diverse institution. Recognition of its further growth and development resulted in yet another name change in 1972, to that of Southwest Missouri State University. Finally, on March 17, 2005, the 100th anniversary of Founders' Day, Governor Matt Blunt signed Senate Bill 98, which included changing Southwest Missouri State University's name to Missouri State University. Today, Missouri State University is a multipurpose, metropolitan university providing a broad array of instructional, research, and service programs.

In 1963, a residence center offering freshman and sophomore level courses was established in West Plains, Missouri. Now, as a second campus of the University with its own mission and accreditation, the West Plains campus offers a two-year general education program, which is fully integrated with programs on the main campus, as well as other specialty and skills courses.

The State Fruit Experiment Station in Mountain Grove, Missouri, established by a legislative act in 1899, is the oldest identifiable segment of Missouri State University. Until 1974, it operated as a state agency under a board of trustees appointed by the Governor. As a result of the Omnibus State Reorganization Act of 1974, administrative responsibility for the Station was given to the Board of Regents of the University. In 1994, the Station was assigned departmental status in the College of Natural and Applied Sciences as part of a reorganization of the University.

University Setting

The main campus of the University is located in Springfield, the third largest population center in Missouri with a metropolitan statistical area population of approximately 385,000. Supported by an industrial/manufacturing base and an expanding service industry in tourism, the community serves as a regional center for health and medical services for southwest Missouri, northwest Arkansas, southeast Kansas, and northeast Oklahoma. The second academic campus is located 110 miles southeast of Springfield in West Plains. This city of 11,000 serves as a regional hub for a seven-county area of south central Missouri and several adjacent counties in north central Arkansas. The research campus of the University is in Mountain Grove, a city of 4,900, which is approximately halfway between Springfield and West Plains.

The University's primary service region of southwest Missouri has certain distinctive characteristics which influence various activities and programs of the institution. The southwest region, the fastest growing area in the state with a population of approximately 900,000, has a unique cultural heritage, a significant agricultural economic base, and a rapidly expanding tourism and recreational industry.

Educationally, the region is served by a diverse mix of both public and private colleges and universities. As the largest multipurpose university in southwest Missouri, Missouri State University provides educational leadership in the region.

University System Abridged Mission Statement

Missouri State University is a multi-campus metropolitan university system with a statewide mission in public affairs, whose purpose is to develop educated persons while focusing on five themes: professional education, health, business and economic development, creative arts, and science and the environment.

The University's identity is distinguished by its statewide mission in public affairs, a campus-wide commitment to foster competence and responsibility in the common vocation of citizenship.

Further, the academic experience is grounded in a focused general education curriculum which draws heavily from the liberal arts and sciences. This foundation provides the basis for successful mastery of focused disciplinary and professional studies, as well as enabling critical, independent intellectual judgment on the culture, values, and institutions of the larger society.

The University understands its task of developing educated persons to include adding to the store of human understanding through research, scholarship and creative endeavor, and drawing from that store of understanding to provide service to both the local and professional community that supports it. In all of its programs, both undergraduate and graduate, the University is committed to using the most effective and regularly evaluated methods of discovering and imparting knowledge and to the appropriate use of technology in support of these activities.

The University functions through a multi-campus system structured to complement one another and to address the needs of the metropolitan area they jointly serve.

Organizational Officers

Board of Governors

The Missouri State University System is under the general control and management of the Board of Governors which, according to statutes of the state of Missouri, is charged with the responsibility and authority to adopt administrative policies and procedures relevant to the management of the System.

The ten members of the Board of Governors are appointed by the Governor, with the advice and consent of the Missouri Senate. The nine regular members shall represent each of Missouri's nine congressional districts. A nonvoting student member of the Board is appointed for a two-year term.

 <p>Michael L. Franks Seventh District (President) 2005-2011</p>	 <p>Mary Sheid Eighth District (Vice President) 2005-2011</p>	 <p>James Buford First District 2005-2011</p>	 <p>Michael Duggan Second District 2005-2011</p>	<p>Third District (Open)</p>
<p>Fourth District (Open)</p>	 <p>Phyllis Washington Fifth District 2005-2011</p>	<p>Sixth District (Open)</p>	<p>Ninth District (Open)</p>	 <p>Ryan Sivill (Student Member) 2005 - 2007</p>

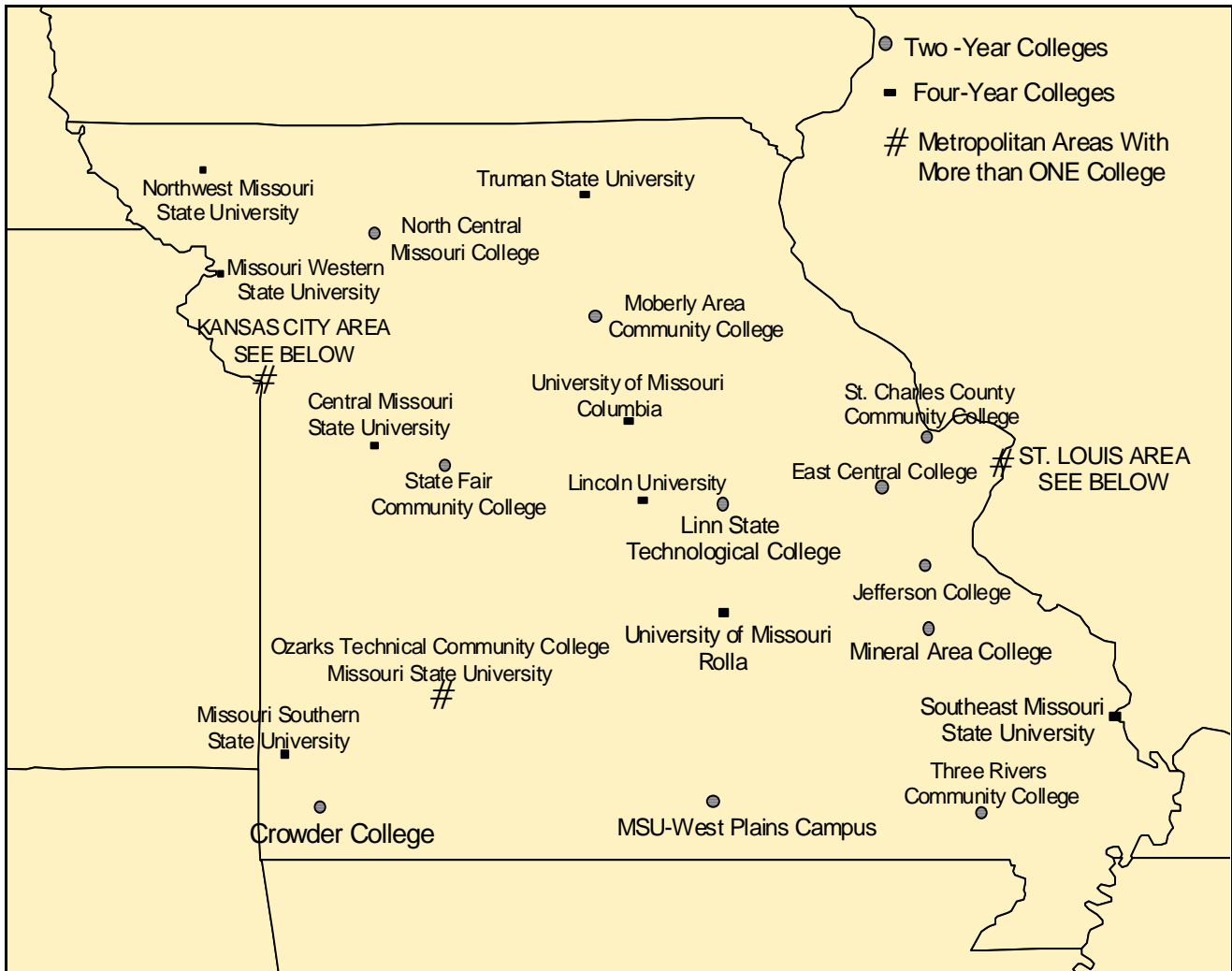
Administrative Council

Dr. Michael T. Nietzel President	Mr. D. Kent Kay Chief Financial Officer
Dr. Jim P. Baker Vice President for Research and Economic Development	Mr. Paul K. Kincaid Chief of Staff
Dr. Don A. Aripoli Vice President for Student Affairs	Mr. Gregory P. Onstot Vice President for University Advancement
Mr. John F. Black General Counsel	Dr. Cynthia L. Pemberton Dean of the College of Health and Human Services
Mr. Gregory L. Burris Vice President for Administrative & Information Services	Dr. John T. Strong Assistant to the President for Public Affairs
Dr. Frank A. Einhellig Acting Provost	Mr. Kent Thomas Chancellor of the West Plains Campus

Academic Organization-Springfield Campus

College of Arts & Letters Dr. Gloria Galanes, Acting Dean	Art & Design; Communication; English; Media, Journalism & Film; Modern & Classical Languages; Music; Theatre & Dance
College of Business Administration Dr. Ronald R. Bottin, Dean	School of Accountancy; Computer Information Systems; Finance & General Business; Industrial Management; Management; Marketing
College of Education Dr. David L. Hough, Dean	Counseling; Early Childhood & Family Development; Educational Administration; Greenwood Laboratory School; Library Science; School of Teacher Education
College of Health & Human Services Dr. Cynthia L. Pemberton, Dean	Biomedical Sciences; Communication Sciences & Disorders; Health, Physical Education, & Recreation; Nursing; Physical Therapy; Physician Assistant Studies; Psychology; School of Social Work; Sports Medicine & Athletic Training
College of Humanities & Public Affairs Dr. Lorene H. Stone, Dean	Defense & Strategic Studies; Economics; History; Military Science; Philosophy; Political Science; Religious Studies; Sociology & Anthropology
College of Natural & Applied Sciences Dr. Lawrence E. Banks, Jr., Dean	Agriculture; Applied Consumer Sciences; Biology; Chemistry; Computer Sciences; Fruit Science; Geography, Geology, & Planning; Mathematics; Physics, Astronomy & Materials Science
Graduate College Dr. Frank A. Einhellig, Dean	
University College Dr. Curtis P. Lawrence, Dean	
College of Continuing Education & the Extended University Dr. J. Ronald Fairbairn, Dean	
Library Services Ms. Karen L. Horny, Dean	

Missouri State Map with Public Colleges and Universities



Kansas City Area Institutions	
<i>Two-Year</i>	Metropolitan Community College – Blue River Metropolitan Community College – Longview Metropolitan Community College – Maple Woods Metropolitan Community College – Penn Valley
<i>Four-Year</i>	University of Missouri – Kansas City
St. Louis Area Institutions	
<i>Two-Year</i>	St. Louis Community College – Florissant Valley St. Louis Community College – Forest Park St. Louis Community College – Meramec
<i>Four-Year</i>	Harris-Stowe State University University of Missouri – St. Louis

Accreditation

The Springfield and West Plains campuses are separately accredited by the Higher Learning Commission - North Central Association of Colleges and Secondary Schools. The University is professionally accredited or approved by the following organizations:

Accreditation Commission for Programs in Hospitality Administration	Council on Social Work Education
The Accreditation Review Commission on Education for the Physician Assistant	Missouri Department of Elementary and Secondary Education
AACSB, The International Association for Management Education	National Association of Industrial Technology
American Association of Family and Consumer Sciences	National Association of Schools of Music
American Chemical Society	National Association of Schools of Public Affairs and Administration
American Speech, Language, and Hearing Association	National Association of Schools of Theatre
Commission on Accreditation for Dietetics Education	National Council for Accreditation of Teacher Education
Commission on Accreditation of Allied Health Education Programs	National Council on Education of the Deaf
Commission on Accreditation in Physical Therapy Education	National League for Nursing Accrediting Commission
Commission on Collegiate Nursing Education	National Recreation and Parks Association/American Association for Leisure and Recreation
Computing Sciences Accreditation Board	The Planning Accreditation Board
Council on Accreditation of Nurse Anesthesia Educational Programs	