



# COAL Budget Committee

Orientation Meeting



# Why Are You Here?

College committees' charge

- To develop recommendations born of collaborative assessments of the goals of the departments as part of a college, as part of a larger university – working together to promote student learning and the public interest.



# Why Are YOU Here?

College committees' membership

The membership of the committee will be as follows:

- The dean will chair the committee
- Each department in the college will elect one representative to serve on the committee.
- The dean may appoint additional members to the committee to insure it includes tenured and non-tenured faculty, a member of the Faculty Senate from the college, department heads, the budget officer, etc.



# WHO is here?

2011-2012 membership

Dept	Elected	Appointed
AD	Vonda Yarberry	
MJ	Jaime Bihlmeyer	Andrew Cline
TD	Mark Putman	Telory Davies*
MCL	Joe Hughes*	Jason Jolley*
CM	Isabelle Bauman	
MU	Jeremy Chesman	Marnie Farmer Julie Combs
EN	Keri Franklin*	Earl Holmer
COAL		Angela Barker*
ex officio		Darin Wallace*



# How LONG will you be here?

## Service terms

The dean will assign staggered three-year terms to the members for a balance of continuity and renewal.

Exp '12	Exp '13	Exp '14
Telory Davies*	Mark Putman	Vonda Yarberry
Jason Jolley*	Joe Hughes*	Jaime Bihlmeyer
Earl Holmer*	Jeremy Chesman	Isabelle Bauman
Angela Barker*	Keri Franklin*	Julie Combs
Marnie Farmer	Andrew Cline	



# How OFTEN Will You Be Here?

Meeting schedule

- Regularly scheduled monthly meetings
- Awaiting specific charges from Executive Committee
- First Executive Committee meeting September 29th



# AA Budget Committee

## Membership

- Provost (chair)
- Deans and two faculty members elected from each of the college budget committees
- Dean and two representatives from the Libraries
- Two representatives from Faculty Senate
- Two representatives from West Plains campus
- Three representatives from Student Affairs



# COAL Reps for AA Committee

## Elections

- Two representatives
- Must be faculty
- All members may vote



# Executive Budget Committee

## Membership

- Eric Bosch (chair)
- One faculty member elected from each college budget committee
- Chair of Faculty Senate
- Chair of Staff Senate
- President of SGA
- Chair of AA Budget Committee
- Chair of Administrative Budget Committee
- Chief Financial Officer
- One representative of the academic deans
- Chancellor of West Plains campus
- Up to two additional representatives from Administrative Council appointed by the president



# COAL Reps for Exec Committee

## Elections

- One representative
- Must be faculty
- All members may vote



Get to know your college budget

# **BUDGET BASICS**





# Budget Basics

Get to know your college budget

Rounded to the nearest million, what is the total COAL budget including salaries, benefits, and operating budgets?

- a. \$5 million
- b. \$12 million
- c. \$17 million
- d. \$22 million



# Budget Basics

Get to know your college budget

Rounded to the nearest million, what is the total COAL budget including salaries, benefits, and operating budgets?

- a. \$5 million
- b. \$12 million
- c. **\$17 million**
- d. \$22 million



# Budget Basics

Get to know your college budget

If we exclude the dollars that go to fringe benefits, what are the percentages of the remaining COAL budget devoted to salaries and operating expenses, respectively?

- a. 93% salaries/7% operating
- b. 65% salaries/35% operating
- c. 96% salaries/4% operating
- d. 77% salaries/23% operating



# Budget Basics

Get to know your college budget

If we exclude the dollars that go to fringe benefits, what are the percentages of the remaining COAL budget devoted to salaries and operating expenses, respectively?

- a. 93% salaries/7% operating
- b. 65% salaries/35% operating
- c. 96% salaries/4% operating
- d. 77% salaries/23% operating



# Budget Basics

Get to know your college budget

Looking only at operating budgets, arrange the six colleges in order of largest operating budgets to smallest.

- a. Arts & Letters
- b. Business Administration
- c. Education
- d. Health & Human Services
- e. Humanities & Public Affairs
- f. Natural & Applied Sciences



# Budget Basics

Get to know your college budget

Looking only at operating budgets, arrange the six colleges in order of largest operating budgets to smallest.

- a. Natural & Applied Sciences (\$1.2 million)
- b. Arts & Letters (\$1.04 million)
- c. Health & Human Services (\$780K)
- d. Education (\$710K)
- e. Business Administration (\$565K)
- Humanities & Public Affairs (\$379K)



# Budget Basics

Get to know your college budget

Which of the following are funded centrally by Academic Affairs, i.e., the Provost's Office?

- a. Faculty travel & development
- b. Faculty & staff computer start-ups and replacements
- c. Per course instruction
- d. Major equipment
- e. Summer school



# Budget Basics

Get to know your college budget

Which of the following are funded centrally by Academic Affairs, i.e., the Provost's Office?

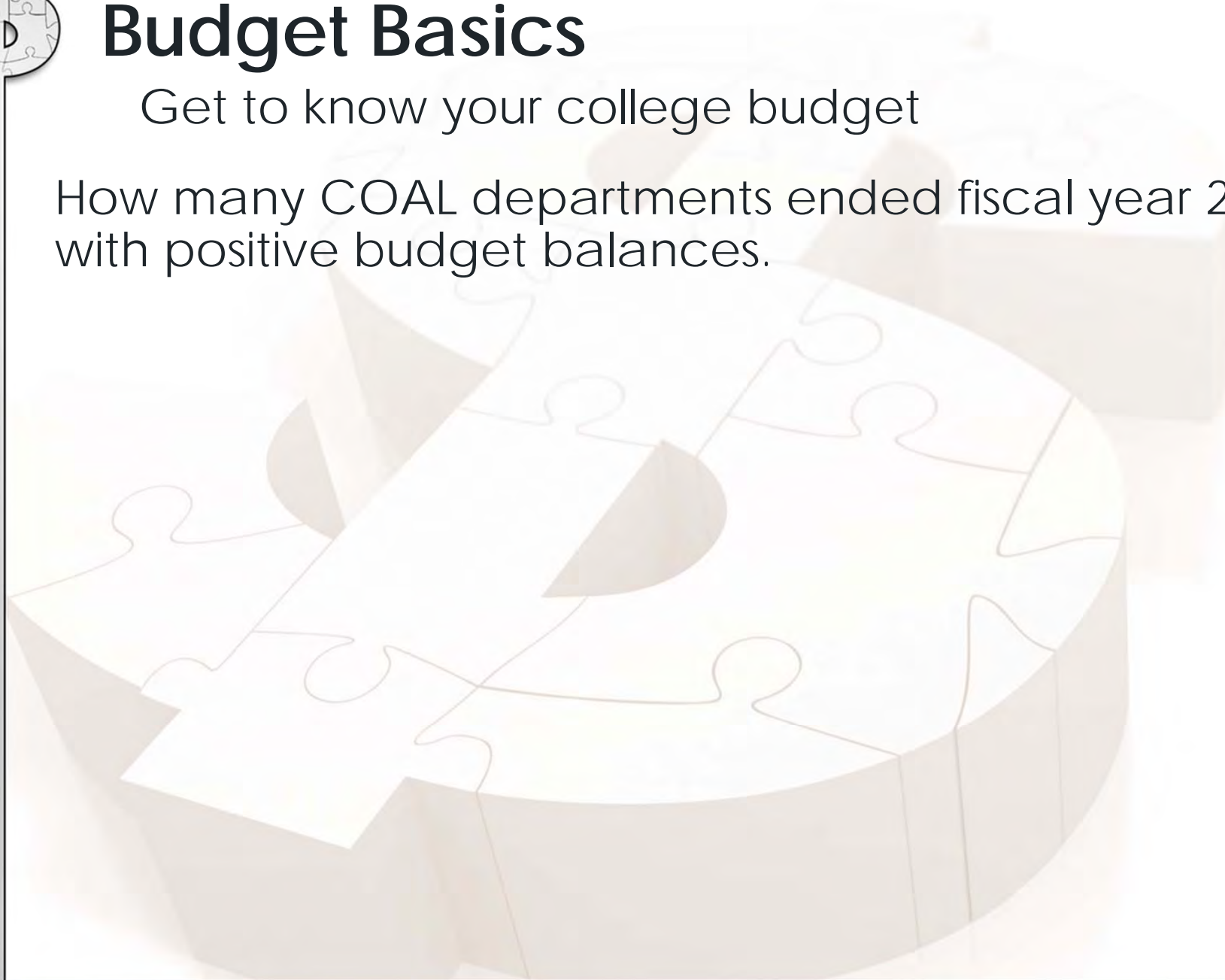
- a. ~~Faculty travel & development~~
- b. ~~Faculty & staff computer start-ups and replacements~~
- c. ~~Per course instruction~~ Except for ...
- d. Major equipment – in part
- e. ~~Summer school~~ Except for ...



# Budget Basics

Get to know your college budget

How many COAL departments ended fiscal year 2010 with positive budget balances.



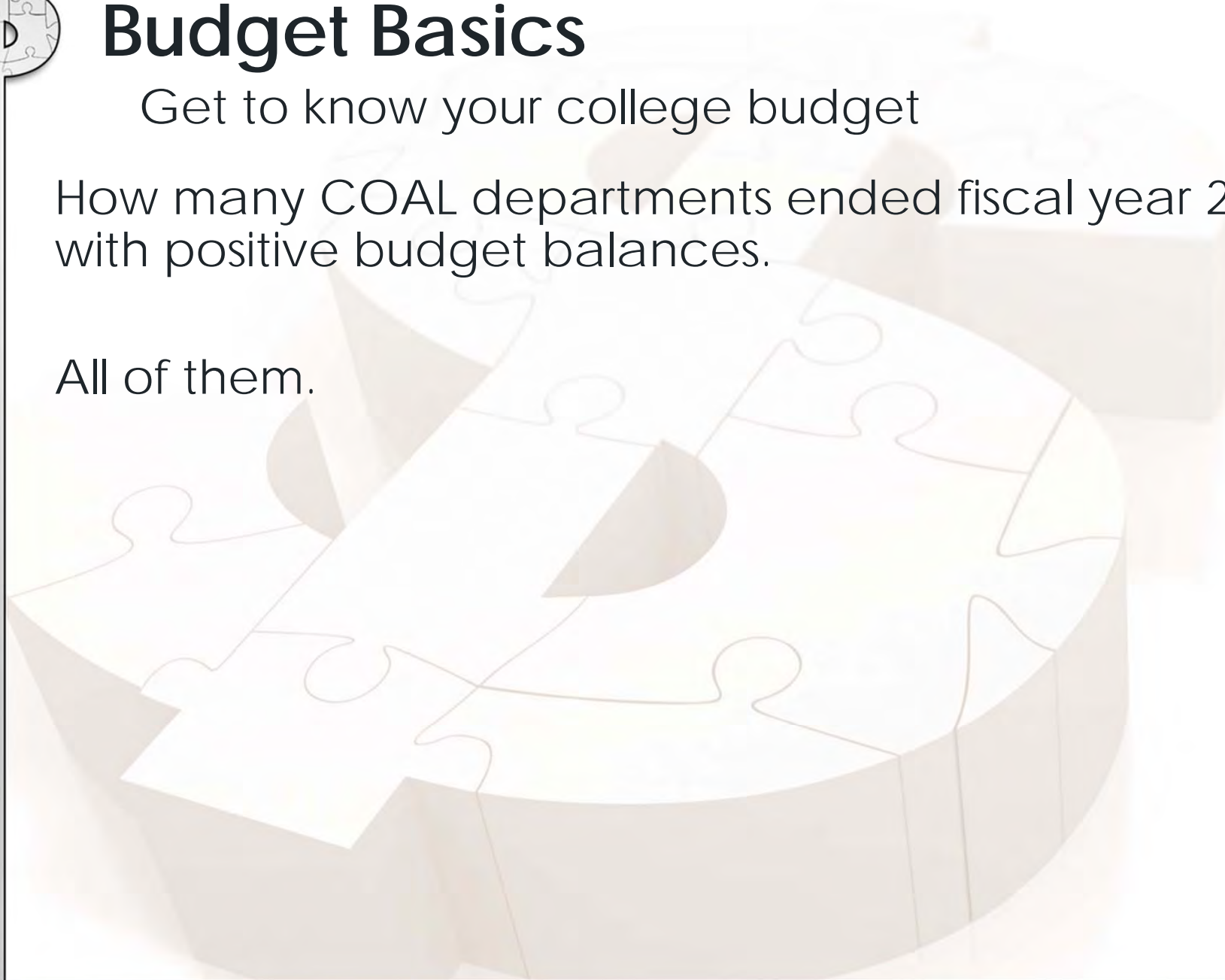


# Budget Basics

Get to know your college budget

How many COAL departments ended fiscal year 2010 with positive budget balances.

All of them.

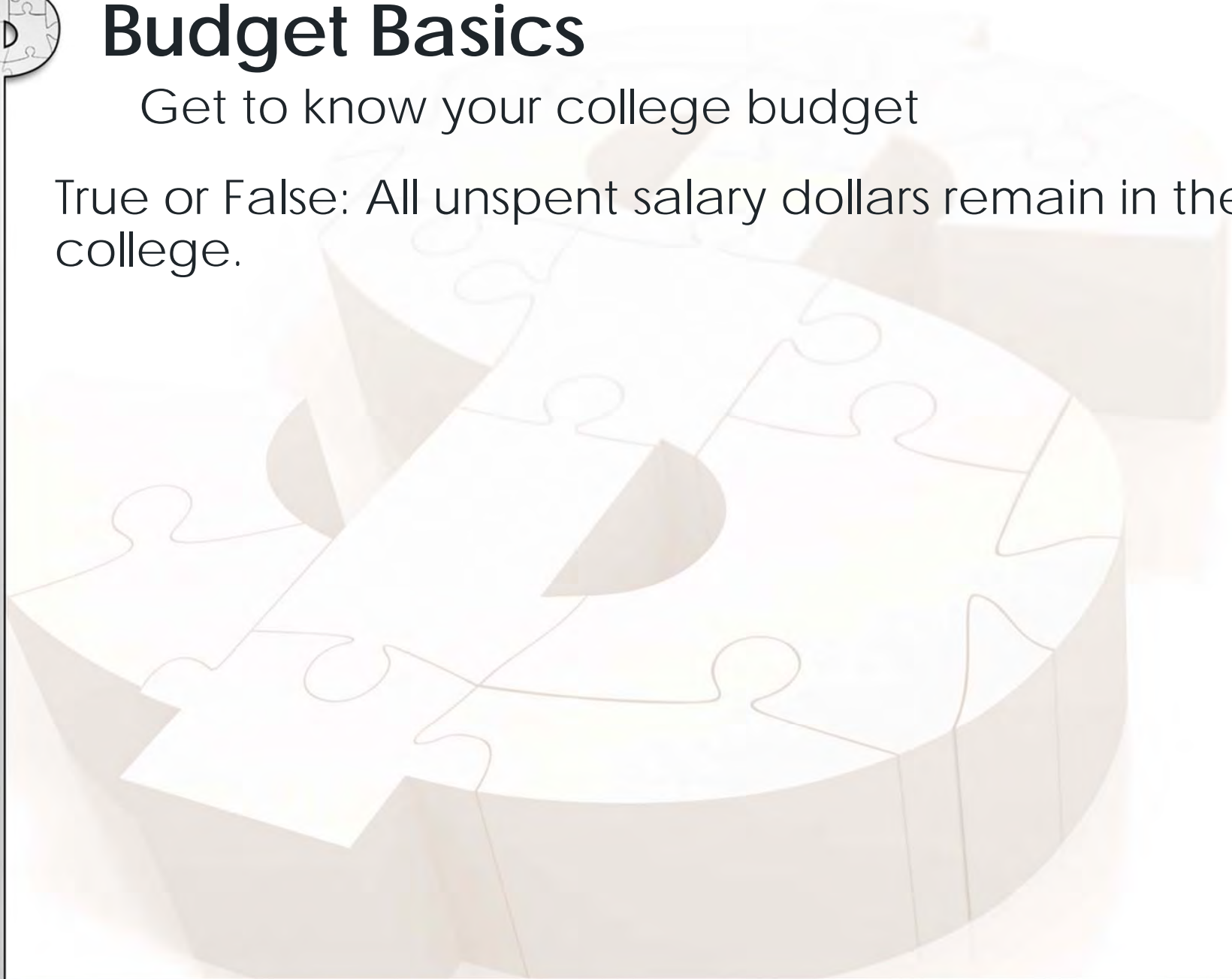




# Budget Basics

Get to know your college budget

True or False: All unspent salary dollars remain in the college.



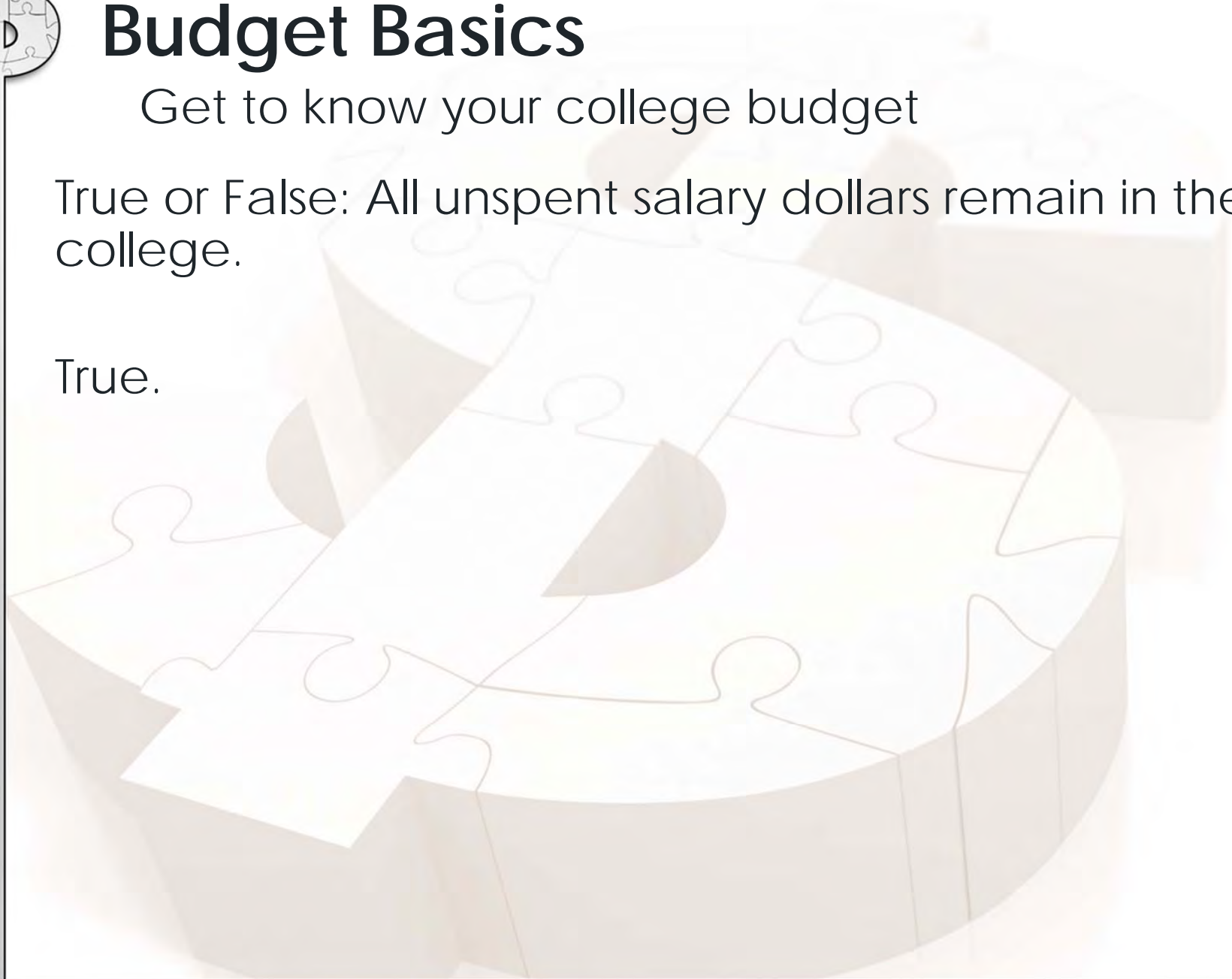


# Budget Basics

Get to know your college budget

True or False: All unspent salary dollars remain in the college.

True.

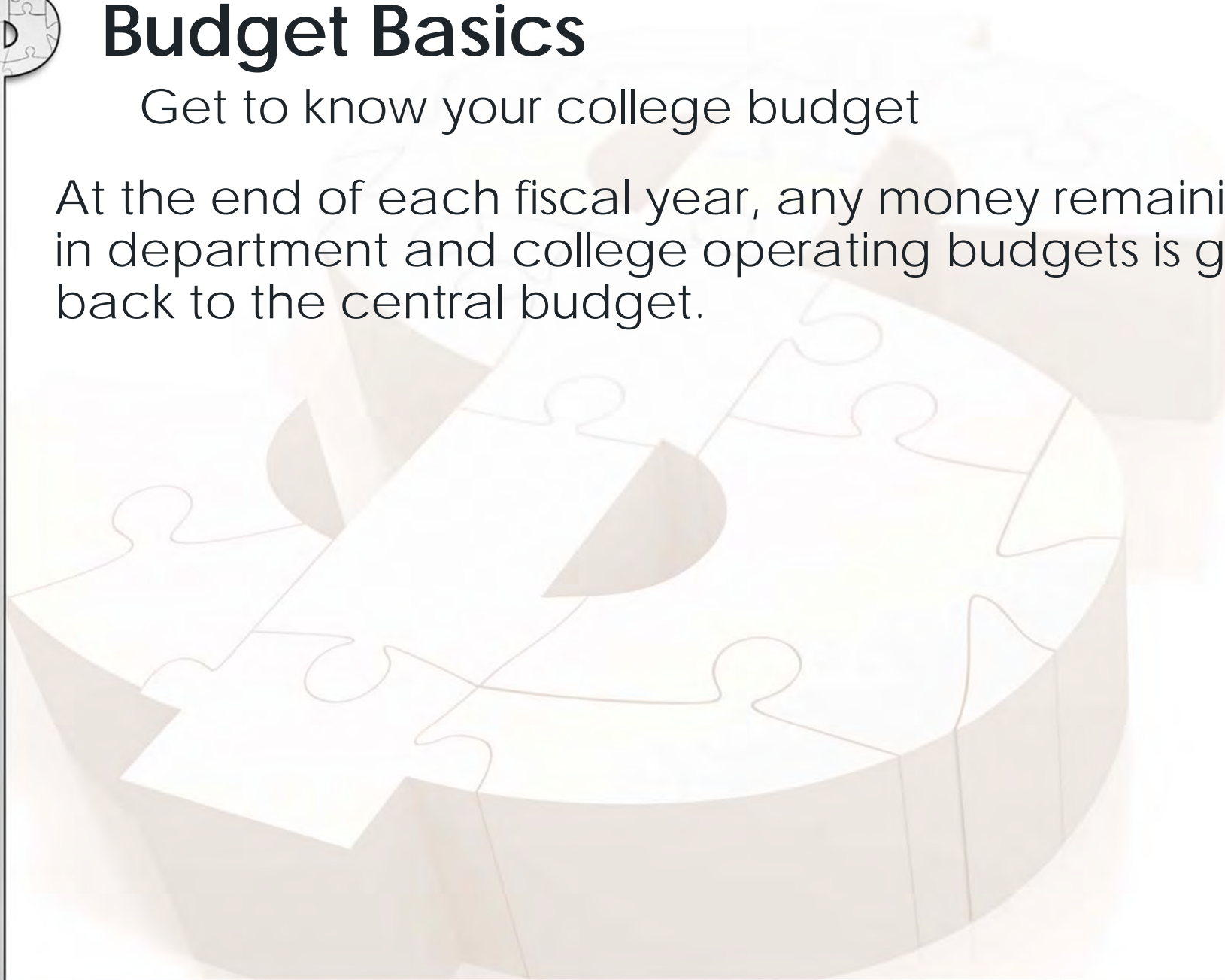




# Budget Basics

Get to know your college budget

At the end of each fiscal year, any money remaining in department and college operating budgets is given back to the central budget.



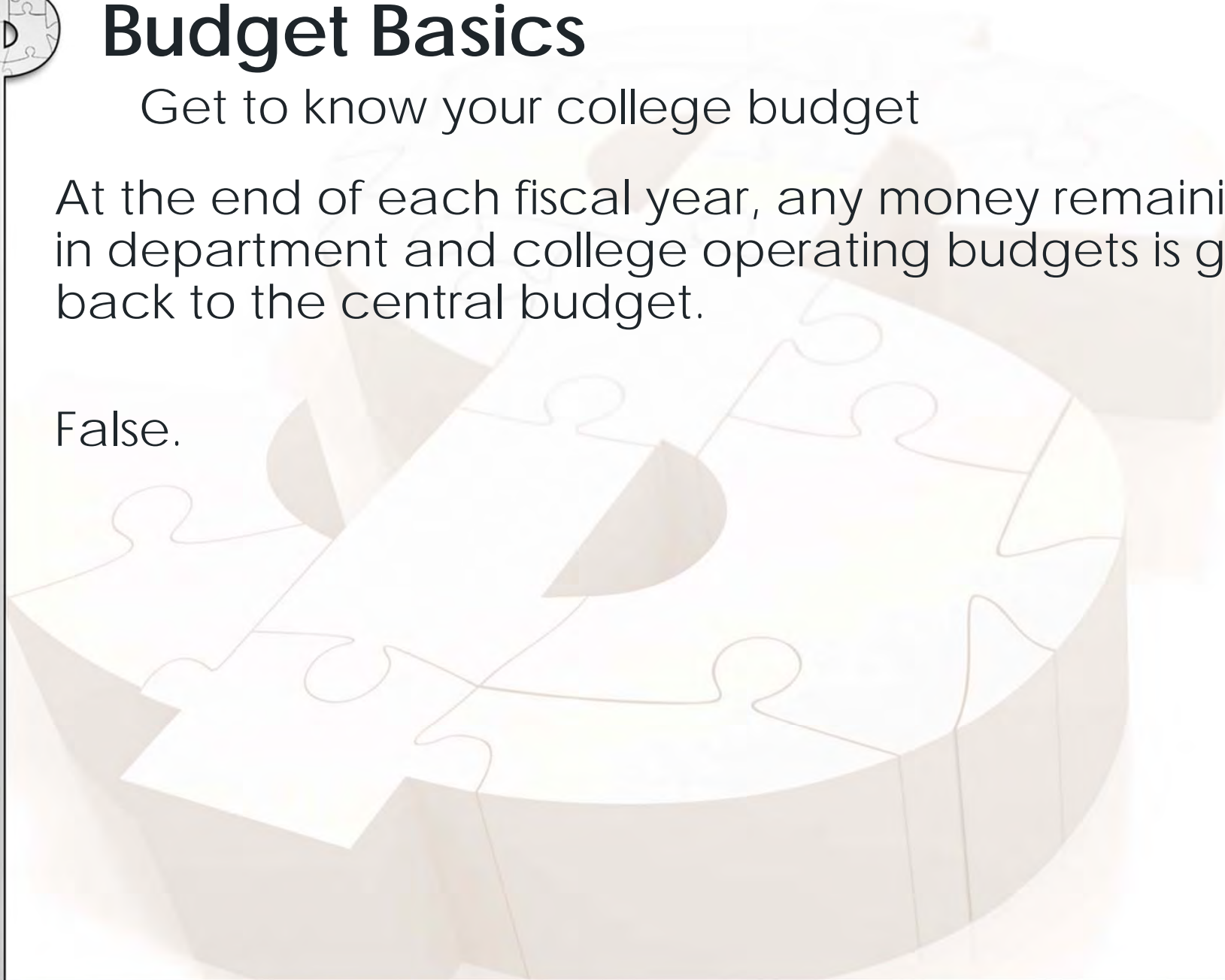


# Budget Basics

Get to know your college budget

At the end of each fiscal year, any money remaining in department and college operating budgets is given back to the central budget.

False.





# Anatomy of a Dept Budget

Adopted Budget  
(appropriations +  
revenue)

College Transfers  
(travel,  
equipment, per  
course)

Other Internal  
Transfers  
(Honors College,  
internal grants,  
dual credit)

Outside Revenue

**DEPARTMENT BUDGET**



# Information You Can Expect

## College Decision Making Process

- Department base budgets
- Sources of funds for the college
- How funds are allocated annually
- How funds are made available
- How decisions are made about spending discretionary funds
- How decisions about faculty and staff positions are made



# Information You Can Expect

## Salary Savings

- Summary of “open lines,” including those held by temporary appointments and those vacant
    - Total ongoing salary savings + \$\$ committed in the current fiscal year for temporary appointments
    - \$\$ associated with open lines and those filled with temporary appointments
- Projected \$\$ remaining for FY13



# Information You Can Expect

## Carry Forward

- Salary Savings
  - Total one-time salary savings carry forward from FY11
  - Total projected one-time salary savings carry forward from FY12
- Operating
  - Summary by department of FY11 budget allocation, FY11 carry forward, income/transfers, and net remainder (carry forward) from FY11
  - Summary of operating fund balances from FY11 and what is being returned to department budgets in FY12



# Information You Can Expect

## College Funding Commitments

- List of FY12 funding commitments in the college with sources of funding (e.g., college operating and/or salary savings carry forward, transfers from Provost's Office), e.g.,
  - Travel allotments
  - Major equipment
  - Support for specific college initiatives



# Information You Can Expect

## Performance & Productivity Outcomes

- Departmental profiles
  - Student headcounts
  - Credit hour production
  - Retention and graduation rates
  - SCH/FTE productivity
- Indicators of quality and serving student needs
  - Faculty and student accomplishments
  - Student demand
  - Needs of the region and the state



# Where We Are Headed

Once we're educated, then what?

- What values guide our budget recommendations?
- What are our priorities in making budget recommendations?
- What are new, creative, collaborative ideas that can inform our budget recommendations?
- What ideas can we contribute to broader considerations regarding budget recommendations across campus?
- How can we lay a foundation for future college budget discussions, priorities, and processes?
- How can the college, its people, and its programs emerge stronger and more capable?